

A MANUAL OF PUNAB WATER RESOURCES MANAGEMENT & DEVELOPMENT CORPORATON; CHANDIGARH
(AS PROVIDED IN THE RIGHT TO INFORMATION ACT-2005)

CONTENTS

MANUAL	DESCRIPTION	RTI-ACT
Manual-1	Particulars of Public Authority	RULE 4(I)(B)(I)
Manual-2	Powers & Duties of Officers& Employees	RULE 4(I)(B)(II)
Manual-3	Procedure followed in decision making.	RULE 4(I) (B)(III)
Manual-4	Norms for discharging of Functions	RULE 4(I)(B)(IV)
Manual-5	Rules, Regulations, Instructions, Manuals and Cords under its control/used by Employees discharging functions	RULE 4(I)(B)(V)
Manual-6	Category of documents held by the Authority or which are under its control.	RULE 4(I) (B) (VI)
Manual-7	Arrangement for consultation with or representation by the member of public in relation formulation of policy or implementation thereof.	RULE 4(I)(B)(VII)
Manual-8	Board, Committee and other Bodies constituted as part of the Public Authority.	RULE 4(I)(B)(VIII)
Manual-9	Directory of Officers and Employees.	RULE 4(I)(B)(IX)
Manual-10	Monthly Remuneration received by officers & employees including system of compensation.	RULE 4(I)(B)(X)
Manual-11	Budget allocated to each agency including all plans, proposed expenditure and reports on disbursements made etc.	RULE 4(I)(B)(XI)
Manual-12	The Manner of the execution of Subsidy Programmes.	RULE 4(I)(B)(XII)
Manual-13	Particulars of recipients of concessions, permits or authorization granted by the Public Authority	RULE 4(I)(B)(XIII)
Manual-14	Information available in Electronic Form.	RULE 4(I)(B)(XIV)
Manual-15	Particulars of facilities to citizen for obtaining information.	RULE 4(I)(B)(XV)
Manual-16	Names, designation and other particulars of the Public Information Officers.	RULE 4(I)(B)(XVI)
Manual-17	Any other useful information.	RULE 4(I)(B)(XVII)

1st Manual: Particulars of Public Authority

PUBLICATION OF INFORMATION REGARDING ITEMS SPECIFIED IN RULE 4(I)(B)(I) OF THE RIGHT TO INFORMATION ACT 2005

- **Name of the Organization:** Punjab Water Recourses Management and Development Corporation;
- **Address of the Organization:** SCO-29, Sector-26, Chandigarh.
- **Head of the Organization:** Managing Director.
- **Key Objectives:** Punjab State Tubewell Corporation Limited (PSTC) was established on 26th December, 1970 for administration, management and installation of tubewells in the State of Punjab. Thereafter, the work of construction of Field Channels/Lining of Watercourses was also entrusted to the Corporation in the year 1974. The Corporation has been restructured by the Punjab Government during February, 2008 as "Punjab Water Resources Management and Development Corporation Limited" (PWRMDC) and its scope of work has been broadened and various other irrigation related activities such as Re-Charging of ground water, Anti-water logging measures, Sprinkle irrigation, Drip irrigation, development of Drainage Systems, River training works, construction of Bands & Embankments, promotion of schemes for execution, improvement and management of major, medium and minor irrigation projects, promotion of schemes for construction and management of Canals, remodeling, renovation of existing Canal System, Lining of Canals and other connected works, to promote , research and development of design techniques of Irrigation structures, computerization and creation of data bank have been included in its main objectives. However, at present, the Corporation is taking up the works of Installation of Deep Tubewells, construction of Field Channels/Lining of Watercourses and Running & Maintenance of already installed deep tubewells in the State of Punjab.

Lining of Watercourses: The primary source of surface water in Punjab is three Indus perennial tributaries- the Sutlej, Beas and Ravi Rivers. Since 1960, three major storage dams have been constructed; Bhakra dam on Sutlej, Pong dam on Beas and Thein dam on Ravi having storage capacities of about 7400 Mm³, 6800 Mm³ and 3200 Mm³ respectively. The ratio of reservoir capacity to average annual flow of these dams is about 40% that permits reasonable degree of seasonal regulation. Since irrigation is essential to increase the production and productivity, it is thus very imperative to conserve every drop of water supplied to the fields through watercourses. Moreover, it has been experienced that there is a shortfall of water at the end of the channels during the period of necessity. Accordingly, by lining the earthen watercourses, water up to the extent of 20-25% can be saved which gets lost due to seepage and breaches and cuts in the unlined field channels. Apart from this, the lining of watercourses will facilitate gravity command in the entire chak, reduction in filling time in the watercourses and optimum utilization of water remaining in the watercourses after completion of rotation, shunning away the constant patrolling of the upstream reaches of the watercourses during the warabundi period thereby eliminating the manpower required for up-keeping and maintenance of katcha watercourses, removal of water lifts(Jhallars)or reduction in lifts which results in saving of energy and manpower, reduction in the cost of maintenance and de-silting of Katcha watercourses and improvement in the efficiency of conveyance system.

Installation of Deep Tubewells: Punjab is predominately an agricultural state. Agricultural provides employment to majority of its people and raw material for some of the industries. Since the state has an excellent production potential for agriculture, it is necessary that irrigation facilities are provided to as much area as possible to increase the production from its fields to meet with the need of the ever increasing

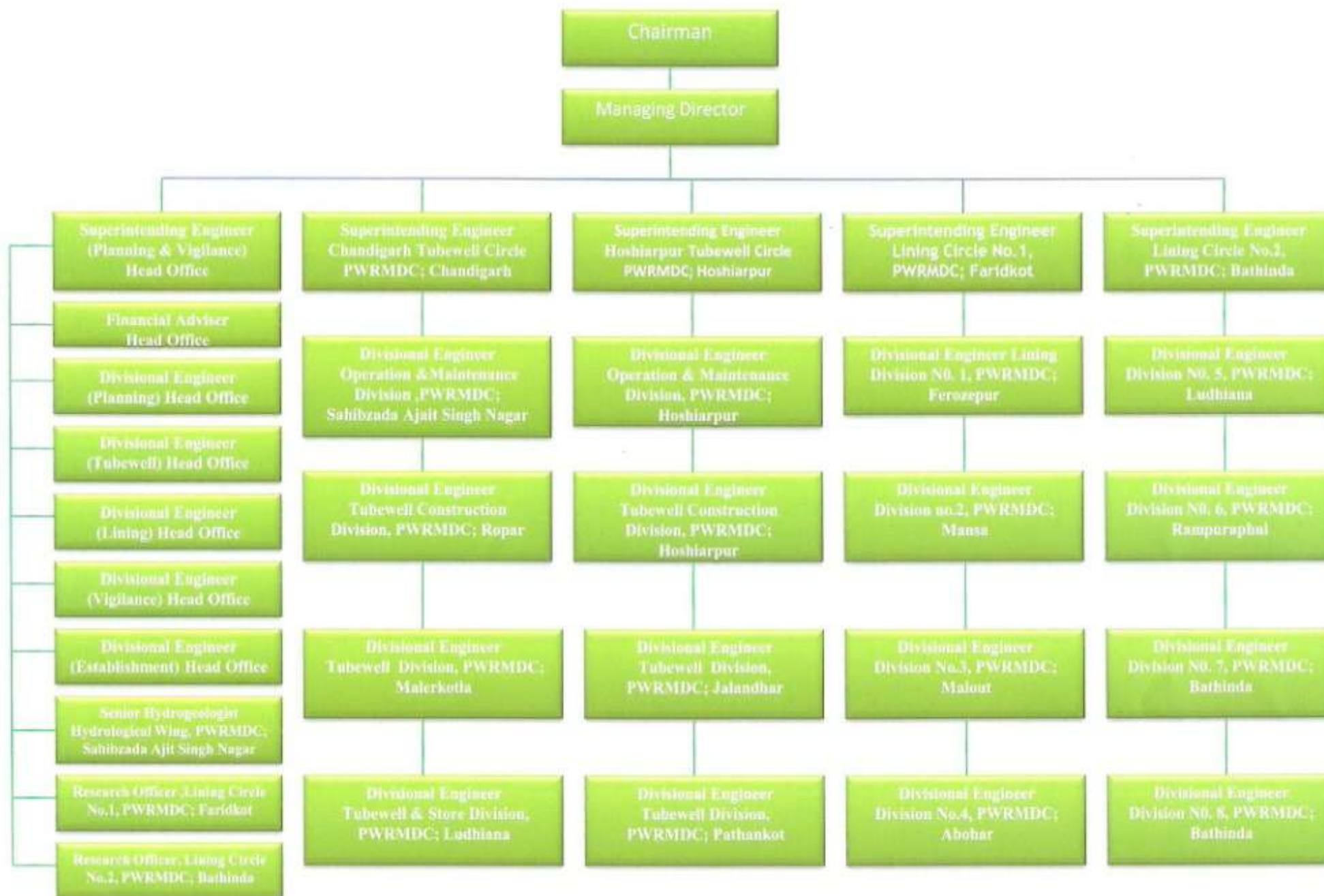
population of the country. Due to optimum utilization of surface water of rivers in Punjab, the demand on groundwater has increased manifold. Development of groundwater has made fast strides and its exploration is increasing day by day. This has been necessitated because of the erratic & inadequate rainfall and non-availability of sufficient surface water resources. The Kandi and some non Kandi areas of the state are semi-arid with medium annual rainfall. The land of these areas is fertile and irrigation facilities are required, but there is no means of irrigation except natural rainfall as Canal irrigation to whole of the Kandi and non-Kandi areas is not technically feasible & viable because of undulating topography and existence of hills and Choes & Khads traversing all along the area. Thence, the only way of providing assured means of irrigation is installation of Deep Tubewells. The aquifer material of the area is mainly composed of boulders, pebbles in association with sand and is deep seated. This area is very backward and farmers are very poor possessing small land holdings. Due to deep seated hard formations, it is beyond the economic reach of the individual farmers to have their own tubewells, so the poor farmers remain mainly dependent on rain. Therefore, to improve the socio-economic condition of the poor inhabitants of the backward Kandi and non- Kandi areas the installation of deep tubewells in the areas was required and entrusted to PSTC now PWRMDC; by the Punjab Govt in 1970-71 under different schemes.

Running & Maintenance of already installed Deep Tubewells: PWRMDC; is taking up the Running & Maintenance of already installed Deep Tubewells so that the farmers get uninterrupted supply of water for irrigation purposes.

- **Functions and Activities/Duties:** The Corporation has its Memorandum and articles of Association for its functioning and activities/duties (which may be referred to). However, these are described in brief as under:-
 1. Sinking and installation of direct Irrigation and augmentation Tubewells.
 2. To undertake installation and construction of Tubewell and other connected works on behalf of private individuals/bodies/Govt. institutions, Companies.
 3. To engage processing manufacture and sale of Tubewell equipment, accessories, Spare parts machinery, plants or any other commercial or industrial products connected therewith
 4. To set up and maintain laboratory/workshop to provide technical guidance repair facilities, sale of stores for concerned Tubewell Irrigation Projects
 5. To provide Tubewell equipment or plant ,land and machinery on rental basis to any individual/body or Govt. Department
 6. To carry out all kinds of ground water exploration business to quantify the ground water resource in different areas
 7. To purchase electric energy from Punjab State Electricity Board
 8. To provide technical know-how, loans and equipment for the installation of Tubewells
 9. To set up demonstration farms, to introduce improved and scientific methods of land use and water utilization
 10. To invest the capital of the company in or to deal with shares, stocks, bond, debentures, obligations and other securities of any other assets and right of the company.
 11. To sell, dispose of transfer let on lease or hire any undertaking project stores land factor business any other assets and rights of the company.
 12. To direct the management, control or supervision of any company, associations or concern by nominating directors, controllers, supervisor, advisors or otherwise or to collaborate with any company.
 13. To promote and operate schemes for the development of Irrigation in the State of Punjab

14. To distribute land sell water pumped through the Corporation owned Tubewells to Individuals, Panchayats, Companies, Corporations, Government and other concerns.
15. To acquire land and other properties and to develop then suitably for the purposes of the company.
16. To provide training to the employees of the Company in India/aboard.
17. To carry on business of Engineers and manufacturers of Tubewells and other Machinery, Plants implements, tools equipments, apparatus and accessories and other like good.
18. To accept stocks or shares in or debentures mortgage debentures or other securities of any other company in payment of part payment for any service rendered.
19. To borrow or raise or secure the payment of money in such manner as the Company may think fit.
20. To receive grants, loans, advances money or deposits from the State of Central Government, Banks Companies, Trusts or individuals.
21. To employ or engage experts, foreign or India consultants in connection with the planning and development of its objects.
22. To seek and secure opening for the employment of capitals in the State of Punjab or elsewhere.
23. To purchase, take on lease or acquire by exchange, on hire otherwise absolutely unconditionally solely or jointly with others and property rights which the company think necessary for his business etc.
24. To erect buildings, plant and machinery for the purpose of the company.
25. To establish or provide, maintain and conduct educational and training institutions, research laboratory experimental workshop for scientific and technical research experiments and tests for all kinds.
26. To enter into any agreement with the Government of India or of a State or with authorities or land holders or any person for the purpose of carrying out its objects
27. To provide for the amelioration and welfare of persons employed by the Company and their families/dependents by building or contributing to building/grant/pensions/allowances/advances/bonus etc.
28. To apply the assets of the company in any way or towards the establishment, maintenance or extension of any association, Institutions or fund connecting with its business/objects.
29. To do all such things as are incidental or conducive to the attainment of objects of the Corporation through any agency whatsoever and in the manner considered fit by the Company.
30. To promote schemes for execution, improvement and management of Major, Medium and Minor irrigation projects or enterprise which in the opinion of the Company are likely to promote or advance the development of irrigation in the State of Punjab.
31. To promote schemes for construction and management of Canal, remodeling, renovation of existing Canal System, Lining of Canals, Lining of Watercourses and other connected works on behalf of the Govt. of Punjab, Govt. Companies and Corporations in Union of India.
32. To take up the scheme for execution and management for recharge of ground water, anti waterlogging measures, development of Drainage system, River training works, construction of bunds and embankment and other connected works on behalf of the Govt. of Punjab, Govt. Companies, bodies, institutions in Union of India.
33. To promote, improve, establish, execute and manage Sprinkler and Drip irrigation schemes on behalf of private individuals, Bodies, Institution, Panchyats, Govt. Companies and Corporations in the Union of India.

ORGANIZATION CHART



2nd Manual: Powers & Duties of Officers & Employees:

PUBLICATION OF INFORMATION REGARDING ITEMS SPECIFIED IN RULE 4(I)(B)(II) OF THE RIGHT TO INFORMATION ACT 2005

.....

Name of the Post	Duties	Powers	Rules/Orders
Managing Director	M.D. is the administrative head of the Corporation and is responsible advisor of the Government in all matters relating to his charge or on which his advice is desired.	<ol style="list-style-type: none"> 1. Convey administrative approval to working estimates for works other than residential building, forming part of a project estimate upto Rs.45.00 lacs subject to the certain conditions 2. Accord technical sanction to detailed estimates of the original works and special repairs (Plan/Non-Plan) Rs.1000.00 lacs subject to maximum 10% of the excess work of the amount sanctioned by the competent authority. 3. Accord Technical sanction of Estimates for maintenance and repair up to 100.00 lacs 4. Accept Tenders for the execution of works by contract of Rs. 500.00 lacs. 5. Accord approval to write off losses of stock due to depreciation of serviceable stock(i.e book losses only as opposed to actual losses) up to Rs, 2,25,000/- only 6. All cadre controlling Authority of PWRM&DC Establishment. 	<p>As per rules 10.4(5) of Departmental Financial Rules</p> <p>As per rule 10.5(1) (ii) of departmental Financial rules.</p> <p>As per Rule 10.5(3)(iii) of Departmental Financial Rules As per Rule 10.6(1) of Departmental Financial Rules.</p> <p>As per PFR Rule 19.15 Sr. 2.</p> <p>As per CSR& PSTC's Bye Laws 1977.</p>
Superintending Engineer	Superintending Engineer is incharge of the Circle which is administrative unit of the Department. SE is responsible to the Chief Engineer for the administration and general control of the public works within the Circle.	<ol style="list-style-type: none"> 1. Accord Technical sanction to detailed Estimates of the original works and special repairs (Plan /Non Plan) upto 25.00 lacs subject to maximum 10% Excess over the amount of Administrative approval. 2. Accord Technical sanction of Estimates for maintenance and repair up to 25.00 lacs. 3. Accept tenders for execution of work by contract (1) Full powers upto 10.00 lacs. (2) Rs. 10 .00 lac. to 25.00 lacs when tendered rates are not more than 10% over schedule of rates plus sanctioned premium 	<p>As per Rule 10.5.(1) (iii) of Departmental Financial Rules.</p> <p>As per Rule 10.5(3)(iii) of Departmental Financial Rules As per Rule 10.6(2) (i) of Departmental Financial Rules. Managing Director PWRM&DC; delegated his powers vide letter no.980-86//DE (L) dated</p>

		<p>& Non- Schedule items do not exceed 10% of the estimate. .</p> <p>4. Sanctioned detailed estimates of lining of Watercourses up to Rs.30.00 lacs.</p> <p>5. He is also enjoying the powers of Superintending Canal officers under Northern India Canal and Drainage Act 1873.</p> <p>6. Accord approval to write off losses of stock due to depreciation of serviceable stock(i.e book losses only as opposed to actual losses) up to Rs, 75,000/- only</p> <p>7. Appellate Authority in respect of cases decided under Section 30B by the Divisions.</p> <p>8. Appellate Authority in RTI cases.</p>	<p>7/4/2011 for approval of tenders up to 30.00 lacs. Managing Director PWRM&DC delegated his powers under Rule 10.5 Sr. No 1 DFR vide letter no.959-79//DE(L) dated 7/4/2011.</p> <p>As per PFR Rule 19.15 Sr. 2.</p> <p>As per section 30(B)(C) Northern Canal& Drainage Act 1873.</p> <p>As per Section 19 of RTI Act-2005</p>
<p>Divisional Engineer</p>	<p>Divisional Engineer is incharge of Divisional Unit of the Department i.e. Division. DE is responsible to Superintending Engineer for execution of the work and management of all works within the division. DE is also responsible for execution of work as per PWD specifications and approved Drawings from the competent authority. DE is also responsible for all accounts matters in his division and makes payment for the works and also submits the accounts direct to Financial Adviser, PWRMDC.</p>	<p>1) Accord Technical sanction of the detailed Estimates of the original works and special repairs (Plan /Non Plan) Rs. 5.00 lacs. Subject to maximum 10% excess over the amount of Administrative approval.</p> <p>2) Publication of schemes of Lining of Watercourses and conducting Hearings for approving the schemes under Northern Canal& Drainage Act 1873. He is also enjoying the powers of Divisional Canal officers under Northern India Canal and Drainage Act 1873.</p> <p>3) Sanction detailed estimates of lining of watercourses up to 10.00 lacs.</p> <p>4) Accord approval to write off losses of stock due to depreciation of serviceable stock (i.e book losses only as opposed to actual losses) up to Rs, 15,000/- only selective officer and Rs, 8,000/- only non-selective officer provided the loss over Rs. Rs. 3000/- is reported to SE.</p> <p>5) Divisional Engineer acts as PIO in RTI cases</p>	<p>As per Rule 10.5(i) (iv) of Departmental Financial Rules.</p> <p>As per section 30(B) of Northern Canal& Drainage Act 1873.</p> <p>Managing Director PWRM&DC delegated his powers under Rule 10.5 Sr. No 1 DFR to D.E. of PWRMDC lining Divisions.</p> <p>As per PFR Rule 19.15 Sr. 2.</p> <p>As per Section 7 of RTI Act-2005.</p>

Sub Divisional Engineer	Sub Divisional Engineer is incharge of sub division and is responsible to Divisional officer for the management and execution of work within the sub division. SDE is responsible for the execution of works as per PWD specifications and as per approved drawings by the competent authority. SDE also issues work orders to the contractor whose bid has been accepted by the Tender accepting authority with the approval of his executive engineer.	1) He acts as Sub Divisional Canal officer under Northern India Canal & Drainage Act, 1873. 2) sub Divisional Engineer acts as APIO in RTI cases	As per Section 7 of RTI Act-2005
Junior Engineer	JE is incharge of one of the Sections of the Sub Division and is responsible to his Sub Divisional Officer. JE observes field data of the works to be executed and enters the same in the specified level book on the basis of which estimates are framed. JE also executes the work at site and is responsible for its quality control as per PWD specifications and approved drawing etc. JE makes the record entries of the executed works in the Measurement books which forms the basis for payment to the Contracting agencies. JE prepare the Stock account, T&P account &MAS account of the works/section under the charge. Prepares the rolls of the staff working under control. Collects quotations for Local Purchase. Prepares and submits of Progress Reports of the works under control. Looks after the Stock and T&P articles.	JE is an incharge of stores, tools and plants and issues the material from the stores to the work sites.	
Financial Advisor	<ol style="list-style-type: none"> 1) FA is financial advisor to Managing Director PWRM&DC. 2) FA also works as Drawing and Disbursing Officer of Punjab Water Resources Management & Development Corporation. 3) FA prepares the budget estimates/revised estimates for the non-plan schemes, and issues the funds to concerned field Divisions after approval from the concerned Managing Director. 	Financial Powers which are vested by Drawing and Disbursing Officer's are being exercised by him.	As per Manual of Instructions of Department of Finance 1984 Edition and Account Code Vol-II&III
Dy. C.A.O.	<ol style="list-style-type: none"> 1. Dy. C.A.O is responsible to FA. 2. Dy. C.A.O is incharge of maintaining the General Provident Fund/EPF Accounts of all Officers/Officials of PWRM&DC. 	---	---

Accounts Officers	<ol style="list-style-type: none"> 1. A.O is responsible to FA. 2. A.O prepares/passes salary, TA/DA of all Employees Officers of Head office. 3. A.O also looks after the funds position of PWRMDC 	--	----
Zilledar	<p>He is Member of revenue Establishment. His duties in respect of works being under taken by the PWRMDC;</p> <p>Installation of Deep Tubewells:</p> <ol style="list-style-type: none"> 1. He peruses and checks the record/required documents from the beneficiary farmers&Gram Panchyat related to the site where tubewell is to be installed and submits in the Division Office. 2. He checks the chak plan of tubewell prepared by the Patwari. 3. He prepares the proposal of UGPL scheme. 4 .He gets issued notces u/s 30-B&30C from DCO While preparing chakbundi of Tubewell. 5. He assists the Divisional Canal Officer when hearing of the scheme is conducted under Northen India Canal&Drainage Act-1873. 6. He prepares Bhaichara/turn/ Warabundi u/s 68&tawin u/s70. 7. He superwise whether the KHATOUNIE'S PARCHI have been distributed to the beneficiary farmers timely. 8. He checks/superwise whether the KHATOUNIES have been timely signed by DCO and submitted in the Tehsil Office as per schedule time. 9. He assists the Divisional Engineer and also Thesildar in recovering the Water Cess from the beneficiary farmers. 10. He assists the Divisional Canal Officer in redressing the grievances of the beneficiary Farmers related to the supply of water from the tubewell. <p>Lining of Watercourses:</p> <ol style="list-style-type: none"> 1 He checks the position of the branches of Watercourse marked by the Patwari on chak plan at the site. 2 .He gets issued notces u/s 30-B&30C from DCO 3. He assists the Divisional Canal Officer when hearing 	As per Northern Canal& Drainage Act 1873.	---

	<p>of the scheme is conducted under Northern India Canal&Drainage Act-1873.</p> <p>4. He checks the revenue reord maintained by the ARC. He takes up the other works/matters related to the revenue as entrusted by the Divisional Engineer.</p>		
IBC/Patwari	<p>He is Member of revenue Establishment. His duties in respect of works being under taken by the PWRMDC;</p> <p>Installation of Deep Tubewells:</p> <ol style="list-style-type: none"> 1. He collects the record/required documents from the beneficiary farmers&Gram Panchyat related to the site where tubewell is to be installed and submits to the Zilledar. 2. He collects the Jamabandi/receives record from the concerned revenue Patwari for preparing the tubewell chak plan. 3. He assists the Zilledar in preparing the proposal of UGPL scheme. 4. He assists the Zilledar and Divisional Canal Officer when hearing of the scheme is conducted under Northern India Canal&Drainage Act-1873. 5. He assists the Zilledar while preparing Bhaichara/turn/ Warabundi. 6. He collects the record from the Tubewell Operator or Shareholders in regard to water supplied for irrigation from tubwell and prepare Katounis. 7. He submits the Katounis in the Tehsil office after getting approved and signed from the D.C.O. 8. He gets the statement from the bank and submits the list of defaulter beneficiary farmers to the Numberdars to recover the water cess. 9. He assists the Zilledar/Divisional Canal Officer in redressing the grievances related to the supply of water from the tubewell. 10. He perares Form 6(detail of recovery during the month) every month after getting statement from the respective Banks. <p>Lining of Watercourses:</p> <ol style="list-style-type: none"> 1. He prepares the chack plan of Watercourse after getting record from the Canal Office. 2. He gets the revenue related record from the other offices. 3. He serves the notice to the shareholders under 	----	----

	<p>Northern India Canal&Drainage Act-1873.</p> <p>4. He assists the Zilledar and Divisional Canal Officer when hearing of the scheme is conducted under Northern India Canal&Drainage Act-1873.</p> <p>5. He informs the shareholders about the revenue of the scheme of lining of Watercourse.</p> <p>He takes up the other works related to the revenue as entrusted by the Zilledar and Divisional Engineer.</p>		
ARC	<p>He is Member of revenue Establishment.</p> <p>1. He maintains the record of Revenue Branch.</p> <p>2. He compares the works done by the Patwaris.</p> <p>3. He reports the Zilledar about the works of the Patwaris.</p> <p>4. He assists the Zilledar and DE in preparing the cases related to Revenue Branch.</p> <p>He takes up the other works related to the revenue as entrusted by the Zilledar and Divisional Engineer.</p>	---	
Divisional Accountants Officer	<p>1. DAO is the charge of the Accounts Branch of the Division.</p> <p>2. Acts as Compiler of the Accounts of the Division.</p> <p>3. As primary auditor, he is the representative of the Audit Department (A.G. Punjab) if deputation to PWRMDC.</p> <p>4. Acts as an adviser to the Divisional Engineer in all matters relating to the accounts and budget estimates.</p> <p>5. Responsible to check the correctness of the payments made to agencies on the basis of rates and quantities sanctioned by the competent Authority as per sanctioned estimate and availability of budget and funds.</p> <p>6. Responsible for submission of Monthly and final accounts of the Division to FA.</p>	---	----
Cashier	<p>1. He is basically Senior Assistant and handles the Cash.</p> <p>2. He maintains the Cash Book as per provisions of Punjab Financial Rules Vol. 1 and Departmental Financial Rules.</p> <p>3. He is also to ensure that Corporation receipts, if any, is deposited in the Bank in the Corporation's account on the same day or the following day.</p>	---	-----
Sub Divisional Clerk	<p>1. He prepares the bills relating to works and record necessary certificate on Measurement Books.</p>	-----	-----

	<p>2. He prepares Accounts of the Sub Division for submission to the Division Office.</p> <p>3. He also maintains other relevant record of the Sub Division.</p>		
Secretary	He deals with company affairs/ matters.	---	
Superintendent	<p>1.To control the entire office staff of his branch</p> <p>2. To advise the superior officers on all matters pertaining to his branch.</p> <p>3. To see that record keepers put up necessary reminders on letters requiring replies on due dates.</p> <p>4. To scrutinize all drafts on cases routed through him and to satisfy himself that all references have been correctly quoted etc.</p> <p>5. To deal all the confidential cases in his office.</p> <p>6.To maintain the branch in proper manner etc.</p>	----	----
Senior Assistant	He deals with all the cases assigned to him by his Superintendent. He initiates the cases and records his opinion (on noting file) and gives all facts of the case as per instructions/rules of the Government. After approval of the Competent Authority he prepares and put up the draft in this regard. He also monitors all cases assigned to him.	----	----
Clerk/Junior Assistant	<p>1. He is part of the clerical branch of Division/Circle/Head Office etc.</p> <p>2. He is also assigned the duties of record keeper/diaries/dispatcher/typist etc.</p>	----	----
Circle Head Draftsman	<p>1. He is the in charge of the Drawing Branch of the Circle Office.</p> <p>2. To scrutinize the estimates submitted by the Divisional Office and records a check certificate in token of its correctness.</p> <p>3. To scrutinize the comparative statement of tenders, submitted by the Divisional Office in respect of quantities/Departmental rates etc.</p> <p>4. To allot the work to the Drawing Office Staff under his control.</p>	---	----
Divisional Head Draftsman	<p>1. He is the incharge of the Drawing Branch of the Division Office.</p> <p>2. To peruse the estimate submitted by the Sub Division in respect of quantities/departmental rates etc. and record a check certificate on the estimates in</p>	----	----

	<p>respect of correctness.</p> <p>3. To allot the work to the Drawing Branch staff under his control.</p>		
Draftsman	<p>1. He is part of Drawing Branch of Division/Circle/Head Office.</p> <p>2. To prepare Drawings and Estimates.</p> <p>3. To check the work done by the Junior Draftsman.</p> <p>4. To peruse estimates with all sorts of Drawing records and registers as laid down in PWD Code and Design Manual of PWRMDC.</p> <p>5. To prepare progress Reports and other reports related to Drawing Branch.</p>	----	----
Junior Draftsman	<p>1. He is also part of Drawing Branch of Division/Circle/Head Office.</p> <p>2. To copy map/drawings on tracing cloths or tracing papers.</p> <p>To ink pencil drawing when necessary.</p>	---	----
Senior Hydrogeologist	<p>SH is the Incharge of the Hydrogeological Wing and has administrative powers of the Wing. He prepares and submits the project reports related to Hydrogeological Wing for the new projects for installation of deep tubewells. He makes correspondence with the field offices and the head office. He approves the assembly design and the pumping tests reports submitted by the J.Hs. He finalizes the reports on sick tubewells submitted by the J.Hs.</p>	----	
Junior Hydrogeologist	<p>1. He executes all works related to the site selection i.e conducting Hydrogeological surveys for the new /alternative Tubewells.</p> <p>2. He prepares Hydrogeological comments/reports for the site selection.</p> <p>3. He submits the Assembly Design of Tubewell to SH.</p> <p>4. He Attends the Lowering of the assembly pipes.</p> <p>5. He Attends development & over development works of the tubewells.</p> <p>6. He controls and Guides the STA's in performing the duties of their sphere.</p> <p>7. He operates the computer systems with the softwares related to the works of Hydrogeological Wing.</p>	---	

<p>Junior Geophysicists</p>	<ol style="list-style-type: none"> 1. He interprets the observations made in the field during the resistivity surveys by the STA and accordingly submits the report for selection of new tubewell sites. 2. He conducts Logging and submits the reports by demarcating the potential granular zones for designing of the assembly for the boreholes being drilled for the installation of deep tubewells. 	<p>---</p>	
<p>Senior Technical Assistant</p>	<ol style="list-style-type: none"> 1. He conducts Hydrogeological surveys such as observing water levels and marking site locations for the new projects and assisting the Junior Hydrogeologist for various works related to field. 2. He conducts the geophysical surveys for selection of new tubewell sites. 3. He collects sand samples from the drilling sites collected by the drilling staff during drilling of the borehole. 4. He prepares the tubewell assembly design in consultation with the J.H. and checks the assembly at the site before lowering of pipes. 5. He Attends Lowering of the assembly pipes with the J.H. 6. He Conducts tubewell development tests and submits the reports. 7. He Collects water samples of the new tubewells. 8. He Visits the sick tubewells as and when required by the concerned Division for suggesting the remedial measures & rectification of the sick tubewells. 9. He maintains the data bank and enters the complete data into the computer system in the office. 	<p>----</p>	
<p>Research Officer</p>	<ol style="list-style-type: none"> 1. He is Incharge of the Research Wing and has administrative powers of the Wing. 2. He assesses during inspection the quality of the works and materials being used for the construction and confers the suggestions to the field staff and submits the reports to the Higher Authorities accordingly. 3. He guides subordinate staff for carrying out different research /laboratory experiments & material testing processes. 4. He makes Correspondence on administrative as well as technical matters with the Higher Authorities and field offices. 	<p>----</p>	

	<p>5. He sends the estimates for approval after concurrence.</p>		
Assistant Research Officer	<p>1. He assesses the quality of the works and materials being used as per PWD specifications during inspection of Watercourse and confers the suggestions to the field staff and submits the Inspection reports to the Research Officer accordingly.</p> <p>2. He submits material testing reports to the Research Officer.</p> <p>3. He checks the Interpretation of chemical analysis data to ascertain the suitability of water for the Agricultural purposes and chemical quality reports/ maps prepared by Research Assistants.</p> <p>4. He checks the Plotting & Interpretation of gradation analysis data of aquifer samples to determine the appropriate slot/filter and gravel size for the tubewell assembly.</p> <p>5. He guides and suggests the Research Assistants in carrying out different Research/ laboratory experiments.</p>	----	
Research Assistant	<p>1. He carries out Test of material used in the lining of Watercourses i.e. sand, Bricks & cement as per ISI specifications</p> <p>2. He carries out Chemical analysis of water samples taken from the tubewells to determine its suitability for Agricultural purposes and also to determine its corrosive and scale forming tendency and accordingly suggestions are given for economically viable treatment, if any, to the sick tubewell for its revival.</p> <p>3. He carries out gradation analysis of aquifer sand samples collected during borehole drilling.</p> <p>4. He carries out Test of gravel samples collected from drilling sites.</p> <p>5. He Controls & guides the Laboratory Attendants and workers in the laboratory.</p> <p>6. He conducts the experiments for determining the seepage losses in the Katcha and Pucca Watercourses.</p> <p>7. He Prepares and submits the estimates for the various experiments.</p> <p>8. He Prepares, upkeep and submits the rolls of the staff working under him.</p>	----	

	<p>9. He maintains account of all items, material, apparatus, labour under his charge and expenditure on experiments being conducted.</p> <p>10. He Interprets the chemical analysis data to ascertain the suitability of water for the Agricultural purposes and preparation of chemical quality reports/ maps.</p> <p>11. He takes up the works of Plotting & Interpretation of gradation analysis data of aquifer samples to determine the appropriate slot/filter and gravel size for the tubewell assembly.</p> <p>12. He attends the chemical treatment of the Tubewells.</p>		
Law Officer	<p>1. He is the Incharge of the Legal Cell.</p> <p>2. He prepares the reply of the cases to be submitted in the different Courts on behalf of the Corporation.</p> <p>3. He receives the summons and writs on behalf of the Corporation.</p> <p>4. He is Nodal Officer of the court cases pertaining to the Corporation.</p> <p>5. He provides the feedback of the court cases to the Retainers of the Corporation.</p> <p>6. He makes correspondence of court cases pertaining to the Corporation.</p> <p>7. He vets the replies of the court cases to be submitted by other offices of the Corporation in the different courts.</p>	-----	
Personal Assistant	Attach with Chairman& Managing Director	--	
Senior Scale Stenographer	Attach with Superintending Engineer &Financial Adviser	--	
Steno Typist	Attach with Divisional Engineer	---	

3rd Manual: Procedure followed in decision making.

PUBLICATION OF INFORMATION REGARDING ITEMS SPECIFIED IN RULE 4(I) (B)(III) OF THE RIGHT TO INFORMATION ACT 2005

Process of Decision making			Final Decision making Authority	Related provisions, Acts, Rules etc.	Time limit for taking Decision	Accountability
Nature/Type of Work	Level at which the cases is initiated (Name of the post)	Name of the post which deal with the case before the decision making authority				
Estimate of Work	Sub Divisional Engineer	Divisional Engineer	Superintending Engineer (as per powers), Managing Director (as per powers)	DFR as per rule 10.5	3 Months for whole process from initiation to decision making	Sub Divisional Engineer is accountable for not submitting the case well in time and sanctioning authority is accountable for not approving the case in stipulated period.
Tendering process for the work	Divisional Engineer	Divisional Engineer	Superintending Engineer, Managing Director (as per powers)	DFR as per rule 10.6	40 to 90 days	Divisional Engineer
Local Purchase	Junior Engineer/Assistant Engineer	Sub Divisional Engineer and Divisional Engineer(if not competent)	Divisional Engineer, Superintending Engineer, Managing Director (as per powers delegated by Govt)	PFR as per Rule 19.6, Sr. No.20	10 days	Sub Divisional Engineer
Work order to the works	Sub Divisional Engineer	Sub Divisional Engineer	Divisional Engineer	DFR as per rule 10.6	10 days	Sub Divisional Engineer
Scheme for approving Construction of Katcha Watercourse	Zilledar	Divisional Engineer	Superintending Canal Officer (Appellate Authority)	Northern India Canal & Drainage Act 1873 Section 30A to 30B	51 days	Divisional Engineer
Scheme for approving pipe line for supplying Water from new Installed Deep Tubewell	Zilledar	Divisional Engineer	Superintending Canal Officer (Appellate Authority)	Northern India Canal & Drainage Act 1873 as per Section 30A to 30B	51 days	Divisional Engineer
Extension of Watercourse	Zilledar	Divisional Engineer	Divisional Engineer, Superintending Canal Officer (Appellate Authority)	Northern India Canal & Drainage Act 1873 Section 30A to 30B	51 days	Zilledar and Divisional Engineer
Extension of Pipe line	Zilledar	Divisional Engineer	Divisional Engineer, Superintending Canal Officer (Appellate Authority)	Northern India Canal & Drainage Act 1873 Section 30A to 30B	51 days	Zilledar and Divisional Engineer

4th Manual: Norms for discharging of Functions

PUBLICATION OF INFORMATION REGARDING ITEMS SPECIFIED IN RULE 4(I) (B) (IV) OF THE RIGHT TO INFORMATION ACT 2005:

Nature of Function/Item of Work	Norms/Standard for functions	Time limit for achieving the targets	Reference/documents prescribing norms
<p>Estimate of Work</p> <p>(i) Lining of Watercourses.</p> <p>(ii) Installation of Deep Tubewells</p>	<p>On approval of the scheme, survey of the existing Watercourse is done and L- Section is prepared and Cross Section is designed as per discharge of the Watercourse. The L-Section is submitted to the Competent Authority for approval. After getting approval of the L-Section, the quantities of different items like Earth work, Masonry, Plastering etc are calculated. The detailed estimate of the works is prepared on the basis of CSR+ Zonal Premium and submitted to the Competent Authority for approval.</p> <p>Site provided by the beneficiary farmers for the installation of Tubewell is selected on the basis of Hydrogeological & Geophysical survey and on the basis of water bearing strata tentative drilling depth is proposed/ recommended by the Hydrogeological Wing of the Corporation. The detailed estimate of installation of Tubewell is framed in two parts according to new policy of the Punjab Govt issued vide office order no.12/4/2009/PJ2/215 dated 22/01/2014 and no.12/4/2009/PJ2/814 dated 07/01/2014 which states as "The proposal for installation of Deep Tubewells along with their Operation & Maintenance for 7 years is hereby approved".</p> <p>Part-I:- In this part the estimate of the cost of the drilling& Development including supplying& lowering of assembly with electric resistance welded M.S.Pipes and S.S.Cage type wire wound Screen with allied materials is determined and the estimate is submitted to the competent authority for approval.</p> <p>Part-II: - In this part the estimate of the quantities and cost of the construction of Pump House and D-Tank including fencing of Pump House area with barbed wire as per approved drawing and PWD Specifications is determined. This part also includes the estimate of the cost of the supplying&lowering of Pump set, supplying& installation of control panel & other accessories and commissioning. This part further includes the estimate of the cost of the supplying & laying of unplasticised PVC Pipes. The estimate is submitted to the competent authority for approval and work for Operation & Maitenance of Tubewell for 7 years is allocated to the eligible contactor/agency after fulfilling all required guidelies/instructions.</p>	<p>3 Months for whole process from initiation to decision making</p>	<p>Design Manual</p> <p>As per Govt Instuctions issued vide office order no.12/4/2009/PJ2/215 dated 22/01/2014 and no.12/4/2009/PJ2/814 dated 07/01/2014.</p>
<p>Tendering process for the work</p>	<ol style="list-style-type: none"> 1. NIT & Bid document are got approved from Superintending Engineer/ Managing Director. 2. NIT is published in the three reputed daily Newspaper i.e. English, Punjabi & Hindi for vide publicity. 3. An E-Press Notice & an open tender are upload/floated on the website for sale & submission of the same online. 4. A Tender processing Committee is Constituted by the Competent Authority for the opening of tender (Technical bid & Financial bid). 5. After the last date to submit tender online, Technical bid is opened on a fixed date in the presence of the Tender processing Committee. 6. After that Document of the bidders and technical sheets are downloaded and are scrutinized by the 	<p>90 days</p>	<p>As per CVC guidelines</p>

	<p>tender processing Committee as per qualification criteria of the Bid documents.</p> <p>7. The Bidders qualified in the technical bid are recommended by the Tender processing committee for opening financial bid.</p> <p>8. Financial bids are opened for Technical qualified bidders in the presence of Tender processing Committee.</p>		
Local Purchase	<p>At least three quotations are collected from the local market. The comparative statement is prepared in form of LPA and got approved from the competent authority.</p> <p>OR At least three quotations are invited from the local market and these quotations are opened on prescribed date, time and venue in the presence of vendors or their authorised representatives. Comparative statement is prepared in the form of LPA submitted to the competent authority. After getting the approval from the competent authority, the order for supplying the material/taking up the work is given to the eligible vendor generally who quoted lowest rates.</p>	15 days	PFR 19
Work order to the works	<p>It is an agreement in the form of work order. It is not contract and contains only description of items of work and the rates to be paid for each item without reference to the quantity of work to be executed and the time within which it is to be completed. Work order is issued on I.B. Form no. 9 and conditions are mentioned on its back side. The powers of Divisional Engineer & Sub Divisional Engineer to issue work order have been prescribed in DFR rule no.10.6.</p>	10 days	DFR as per rule 10.6
Scheme for approving Construction of Watercourse	<p>The scheme is published under Section 30-B of North India Canal & Drainage Act-1873 and objection and suggestions are invited within 21 days of the publication. The Divisional Canal Officer hears the objections of the shareholders and differentiates between the objections being raised by the shareholders solely out of selfish and sentimental consideration and ones based on the facts in the field and take note of later category objections or satisfy and the other are ignored. After considering the objections and suggestions, if any, the Divisional Canal Officer approves the scheme as it is or modified form as he may consider fit. After approving the scheme, the Divisional Canal Officer publishes the particulars of the scheme approved by him under sub section –II of Section 30(b) of the Act in the prescribed manner calling upon the shareholders under section 30-C of the Act to implement it at their own cost within the period specified by him. On failure of the shareholder(s) to execute the work within the period specified in the notice under Section 30-C, The Divisional Canal Officer proceeds to carry out the work himself.</p>	51 days	Northern India Canal & Drainage Act 1873 and Design Manual
Scheme for approving pipe line for supplying Water from newly Installed Deep Tubewell	-----do-----		Northern India Canal & Drainage Act 1873
Change in alignment of Pipe line	-----do-----		Northern India Canal & Drainage Act 1873
Extension of Watercourse	-----do-----		Northern India Canal & Drainage Act 1873
Extension of Pipe Line	-----do-----		Northern India Canal & Drainage Act 1873

**5th Manual: Rules, Regulations, Instructions, Manuals and Cords under its control/used by Employees discharging functions:
PUBLICATION OF INFORMATION REGARDING ITEMS SPECIFIED IN RULE 4(I)(B)(V) OF THE RIGHT TO INFORMATION ACT 2005**

- **Acts used for office and field works :-** (i) Northern India Canal & Drainage Act 1873(ii) Punjab State Tubewell Act,1954(iii) Employee's Provident Funds and Miscellaneous Provisions Act, 1952(Amended Scheme 2013),(iv) The Payment of Gratuity Act 1972.(v) Workman Compensation Act-1923(vi) Punjab Termination of Agreement Act 2004.(vii) Punjab Public Premises Act.(viii) RTI Act-2005.(ix) Persons With Disability Act -1995.(x) Land Acquisition Act-1894.(xi) Company Act -1956.(xii) Industrial Dispute Act, 1947.(xiii) Minimum Wages Act, 1948.(xiv) Payment of Wages Act,1936.(xv) Employee's Pension Scheme Act 1995.(xvi) Punjab Scheduled Casts and Backward Classes(Reservation in service) act-2006.
- **Rules, Regulations & Instructions being used for office work:** (i) Memorandum and Articles of Association -2008 (ii) PSTC's Bye Laws 1977(As amended to date) (iii) Punjab Civil Services Rules.(iv) Punjab Financial Rules(v) Departmental Financial Rules (v) Instructions issued by Government of Punjab, Department of Irrigation (Irrigation Personnel-1 Branch) vide notification no.G.S.R.41/Const./Art.309/Adm./2011 dated 16/6/2011(Amended as per working of the Corporation) (vi) Instructions issued by Government of Punjab, Department of Irrigation (Irrigation Personnel-1 Branch) vide notification no.G.S.R.45/Const./Art.309/Adm./2004 dated 30/6/2004(Amended as per working of the Corporation) (vii) Directive issued by Government of Punjab, Department of Irrigation (Irrigation Personnel-1 Branch)issued vide no.3/12/2007/IPP1(2)/23640 dated 13/9/2007.(viii) Introduction of Public Works Account Rules& Procedures (with practical calculations).(viii) Standing Orders.(xix) Annual Report and Accounts.
- **Manuals used for office and field works:** (i) Revenue Manual(ii) Irrigation Manual of order(iii) Manual of Irrigation Practices Vol.1 and Vol-11(iv) Manual of Office Procedure(v) Punjab Land Record's Manual -6(vi) Manual of Instructions of Department of Finance 1984 Edition.(vi) Manual of Administration.(vii) CVC Guidelines.(viii) PSTC Manual.
- **Codes being used for office and field works :-**(i) IS Code 456-1978&2000.(ii) IS Code 875-1987.(iii) PWD Code.(iv) Punjab PWD Specifications, 1963.(v) Common Schedule of Rates.(vi) Account Code Vol-II&III.(vii) IS Code 12097-1994.(viii) IS Code 15755-2007. (ix) IS Code 2800(part-I)-1979.(xi) IS Code 2800(part-II)-1991.(xii) IS Code 11189-1985.(xiii) IS Code4097-1967.(xiv) IS Code 6186-1971.(xv) IS Code 8419(part I)-1977.(xvi) IS Code 8110-1985.(xvii) IS Code 10500-1991.(xviii) IS Code 1489-1991.(xix) IS Code 1542-1992.(xx) IS Code 2116-1980.(xxi) IS Code 2050-1981.

6th Manual: Category of documents held by the Authority or which are under its control.

PUBLICATION OF INFORMATION REGARDING ITEMS SPECIFIED IN RULE 4(I) (B) (VI) OF THE RIGHT TO INFORMATION ACT 2005

Sr. No.	Title of the documents	Category of Document	Custodian of the Documents.
1	Project Estimates	Medium Importance	DHD /CHD
2	Tender Bids	High Importance	Superintendent
3	Approval/Section of the Competent authority regarding tenders.	High Importance	Superintendent
4	Tender Register	High Importance	Superintendent/DAO/DHD
5	Work Estimate	Medium Importance	DHD /CHD
6	Measurement Book	High Importance	JE/AE
7	Check Measurement Book	Medium Importance	SDE
8	Level Book	Medium Importance	JE/AE
9	Cash Book	High Importance	Superintendent
10	Cheque Book	High Importance	Superintendent
11	Receipt Book	Medium Importance	Superintendent
12	Dairy & Dispatch Register	Low Importance	Superintendent
13	Salary Register	Medium Importance	DAO
14	R&M of Vehicles Register	Medium Importance	DAO
15	T. A Register	High Importance	DAO
16	Register of Works	Medium Importance	DAO
17	Stock Register	High Importance	JE/AE
18	Tool & Plant Register	High Importance	JE/AE
19	Material at Site Register	Medium Importance	JE/AE
20	Drawing of Works	Medium Importance	JE/AE/DHD
21	Log Books	High Importance	JE/AE
22	Evaluation Reports of Projects	Medium Importance	DHD/CHD
23	Annual Report and Accounts	Medium Importance	Superintendent
24	Monthly Progress Report Registers	Medium Importance	DHD/CHD
25	Progress Report Register of Breakdown of Tubewells	Medium Importance	DHD/CHD
26	Progress Report Register of Running of Tubewells	Medium Importance	DHD/CHD
27	Year wise Progress Report Register of Division & Block wise Units, Working Hours & Area of Tubewells	Medium Importance	DHD/CHD
28	Medical Reimbursement Register	High Importance	Superintendent
29	Vehicles & HB Advance Registers	Medium Importance	Superintendent
30	LPA Register	Medium Importance	Superintendent
31	Leave Register	Low Importance	Superintendent
32	Attendance Register	Medium Importance	Superintendent/DHD/DAO
33	Estimate Sanction Register	Medium Importance	Superintendent

7th Manual: Arrangement for consultation with or representation by the member of public in relation formulation of policy or implementation thereof.

PUBLICATION OF INFORMATION REGARDING ITEMS SPECIFIED IN RULE 4(I)(B)(VII) OF THE RIGHT TO INFORMATION ACT 2005

Arrangement of Consultation	Relevant Rule
Pre Bid Conference in connection with tendering process	As per CVC guidelines&Punjab Govt. approved Bid Document
Hearing for approving the Scheme of Construction of Katcha Watercourse	Section 30 B-F Northern India Canal & Drainage Act 1873
Scheme for approving pipe line for supplying Water from newly Installed Deep Tubewell	Section 30 B-F Northern India Canal & Drainage Act 1873
Extension of Watercourse	Section 30 B-F Northern India Canal & Drainage Act 1873
Extension of Pipe Line	Section 30 B-F Northern India Canal & Drainage Act 1873

8th Manual: Board, Committee and other Bodies constituted as part of the Public Authority.
PUBLICATION OF INFORMATION REGARDING ITEMS SPECIFIED IN RULE 4(I)(B)(VIII) OF THE RIGHT TO INFORMATION ACT 2005

- **Name of Board:** Board of Directors of Punjab Water Recourses Management and Development Corporation;
- **Composition:** As per Memorandum of Articles of Association of PWRMDC; Section 77, the number of Directors shall not be less than three and not more than fifteen.
- **Powers and Functions:** -As per Memorandum and Articles of Association of PWRMDC; the powers and functions of the Board are:-
 - Section 79(i):-** Subject to the provisions of the Act, the board shall be entitled to exercise all such powers and to do all such acts and things as the Company is authorized to exercise and do in the furtherance of its objects. Specialized in the Memorandum of Association for which the Company is established except such powers as required by the Act or Memorandum or Article of Association of the Company to be exercised or done by the Company in General meeting. In exercising such powers or doing any such acts or things, the board shall be subject to the provision contained in that behalf in the Memorandum or Articles of the Company or in any resolutions not inconsistent there with and duly made there under, including regulations made by the Company in General Meetings.
 - Section 79(ii):-** No regulations made by the Company in General Meeting shall invalidate any prior act of the board which would have been valid if that regulation had not been made
 - Section 80:-**Without prejudice to the general powers conferred by Article 79 and the other powers conferred by these Articles but subject to the Provisions of Section 292 of the Act, the Directors shall have the following Powers, namely:
 - Section 80(i):-**To purchase, take on lease or otherwise acquire for the company, property right or privileges which the Company is authorized to acquire at such price and generally on such terms and conditions as they think fit.
 - Section 80(ii):-** To authorize the undertaking of works of a capital nature.
 - Section 80(iii):-** To pay securities for any property, rights or privileges acquired by or services rendered to the Company either wholly or partly in case or in shares. Bonds, debentures or other securities of the Company and such shares may be issued either as fully paid up or with such amount credited as paid up thereon as may be agreed upon; and such bonds, debentures or others securities may be either specifically charged upon all or any part of the property of the Company and its uncalled capital or not so charged.
 - Section 80(iv):-** To secure the fulfillment of any contracts or engagements entered into by the Company by mortgage or charge of all or any property of the Company and its uncalled capital for the time being or in such other manner as they may think fit;
 - Section 80(v):-** To appoint at their discretion. remove or suspend such managers, secretaries, officers, clerks, agents and servants for permanent, temporary or special services as they may from time to time think fit, and to determine their powers and duties and fix their salaries or emoluments and to require security of such amount as they think fit in such instances.
 - Section 80(vi):-** to accept any person or persons (whether incorporated or not) to accept and hold in trust for the Company any property belonging to the Company or in which it is interested or for any other requisite in relation to any such trust and to provide for the remuneration of such trustee or trustees.
 - Section 80(vii):-** to institute, conduct, defend, compound or abandon any legal proceedings by or against the Company or also to compound and allow time to time for payment or satisfaction of any claims or demands by or against the company.
 - Section 80(viii):-** To refer any claims or demands by or against the Company to arbitration and observe and perform the awards:

Section 80(ix):-To make and give receipts, releases and other discharges for money payable to the Company and for the claimed and demands of the Company;

Section 80(x):-To determine the person who shall be entitled to sign on behalf of the company bills, notes, receipts, acceptances, endorsement, cheques release, contracts and documents:

Section 80(xi):- To appoint any person to be attorney or agent of the Company with such powers (including the power to sub delegate) and upon such terms as they may deem fit.

Section 80(xii):- To open account with any bank or bankers or with any company, firm or individual and to pay money into and draw money from any such account from time to time as the director may think fit;

Section 80(xiii):-To invest in Reserve Bank of India or in such securities as may be approved by the Government and deal with any of the moneys of the Company upon such investments authorized by the Memorandum of Association of the Company (not being shares in this Company) and in such manner as they think fit, and from time to time vary or realize such investments:

Section 80 (xiv):- to execute in the name and on behalf of the company in favour of any director or any other person who may incur any personal liability for the benefits of the Company such mortgages of the Company's personal property (present and future) as they think fit and any such other powers, covenants and provisions as shall be agreed upon;

Section 80(xv):- To give to any person employed by the Company a commission on the profits of any Particular business transaction or a share in the general profits of the Company and such commission or share of the profits shall be treated as part of the working expenses of the Company;

Section 80 (xvi):- From time to time to make, vary and repeal by laws for the regulation of the business of the Company, its officers and employees;

Section 80(xvii):-To give award or allow any bonus, pension, gratuity or compensation to any employees of the Company or his widow, children or dependants that may appear to the Directors just or proper whether such employee, his widow, children or dependents have not a legal claim upon the Company.

Section 80(xviii):- Before declaring any dividend and subject to the approval of the Government, to set aside such portion of profits of the Company as they may think fit to form a fund, to provide for such pensions, gratuities or compensation or to create any Provident or benefit fund in such manner as the Directors may deem fit.

Section 80(xix) :- From time to time and at any time to establish any Local Board for managing any of the affairs of the Company in any specified locality in the State of Punjab and to appoint any person to be members of such Local Board and fix their remuneration and from time to time and at any time to delegate to any person so appointed any of the powers, authorities and discretion for the time being vested in the Directors other than their powers to make call and authorize the members for the time being for any such Local Board or any of them to fill up any vacancies and any such appointment or delegations may be made on such terms and subject to such conditions as the Directors may think fit and Director may at any time remove any person appointed and may annul or vary such delegation.

Section 80(xx):- to enter into all such negotiations and contracts and rescind and vary all such Contracts and execute and do all such acts, deeds and things in the name and on behalf of the company as they may consider expedient for in relation to any of the matters aforesaid or otherwise for the purpose of the company.

Section 80(xxi):-Subject to section 202 of the Act, to sub delegate all or any of the powers, Authorities and discretion for the time being vested in them subject however to the ultimate control and authority being retained by them.

Section 81(i):-Subject to the provision of the Act, the Government may appoint any serving Chief Engineer of the Irrigation Department, Punjab or any other person holding similar rank and engineering qualification to be the Managing Director of the Corporation, for the conduct or management of the business of the Company subject to the control and supervision of the Board of Directors. The Managing Director may be authorized by the board to excise such powers of discretion in relation to the affairs of the Company as are not required to be done by the Board of Directors or the Company at the General Meeting under the Act.

Section 87:-Subject to Section 313 of the Act the Board may with the prior written approval of Government appoint an Alternate Director to act for a Director (hereinafter in this Article called the original Director)" during the latter's absence for a period, of not less than three months from the State Such Director shall not hold office a such for a period longer than that permissible to the original Director. Such appointment shall have effect and such appointee, whilst he holds office as an alternate director, shall be entitled to notice of meetings of the Board and to attend and vote there at accordingly but he shall not require any qualifications and shall ipso facto vacate office if and when absent Director returns to the State in which meeting of the Board are ordinary held or the absent Directors vacates office as a Director.

Section 88:-The Board shall meet together at least once in every three months for the transaction of business and at least four such meetings shall be held every year. They may adjourn and otherwise regulate its meetings and proceedings as they think fit. At least 7 days notice in writing of every meeting of the Board shall be given to every Director at his usual address in India provided, however that any meeting of Directors may be held on less than 7 days notice if all of the Directors of the Company consent thereto. Unless otherwise determined from time to time and at any time by the consent of all the Directors for the time being in India, meetings of the Board shall take place at any office of the Company.

Section 89:- At Chandigarh or anywhere else within or outside the State of Punjab if so decided by the Chairman or the Board.

Section 90:- A Director may at any time summon a meeting of the Board and questions arising at such meetings shall also be decided by majority of votes. The chairman has a second or casting vote.

Section 95:-The Board may, subject to the restrictions laid down in Section 292 of Act, delegate any of its power to committee consisting of such Director or Directors as it think fit and may from time to time revoke such delegation, Any committee so formed shall in the exercise of the powers so delegated, confirm to any regulations that may from time to time be imposed upon it by the Board.

Section 96:-The meeting and proceedings of any such committee consisting of two or more members shall be governed by the provisions herein contained for regulating the meetings and proceedings of the Board so far as the same are applicable thereto, and not superseded by any regulation made by the Board under the last proceeding Article.

Section 99(i):-The Board within thirty days of the conclusion of every meeting of the Board or every Committee of the Board shall cause minutes to be kept by making entries thereof in books kept for the purpose with their pages consecutively numbers, each page of every such book being initialed and the last page of the record of proceedings of each meeting in such books being dated and signed, in the case of minutes or proceedings of a meeting of the Board or of a Committee there of by the chairman of the meeting or the Chairman of the next succeeding meeting, by the Chairman of the same meeting within the aforesaid period of thirty days or in the event of the death or

inability of that Chairman within period, by a Director duly authorized by the Board for the purpose provided that in no case shall the minutes of proceeding of a meeting be attached to any such book by aforesaid by passing or otherwise.

The minutes of a meeting shall give mention.

(a) of names of directors' present at each meeting of the Board and of any Committee of the Board and in the case of each resolution passed at the meeting, the names of the Directors, if any, dissenting from or not concurring in the resolution;

(b) of all order made by the Board and Committee of the Board;

(c) of all appointments of Directors and other officers of the Company; and

(d) of all proceedings of General Meeting of the Company and of meetings of the Board and Committee of the Board.

The minutes of such meeting shall contain a fair and correct summary of the proceedings;

Provided that no matter need be included in any such minutes which the Chairman of the Meeting, in his absolute discretion, is of the opinion that the same.

(a) is or could reasonably be regarded as defamatory to any person.

(b) is irrelevant or immaterial to the proceedings; or

(c) is determined to the interest of the Company;

(ii) Any such minutes of any meeting of the Board or any Committee of the Board or of the company in General Meeting, if kept in the manner provided in clause (i) above shall be evidence of the proceedings recorded in such minutes. The minute books of General Meetings of the Company shall be kept at the office and shall be open to inspection by members on business days between the hours of 10.00 a.m. and 12.00 noon, subject to rules and regulations as prescribed by the Board in this behalf.

Section 100:- The Company may exercise the powers conferred on it by the Act with regard to the keeping of a foreign register and the Board may make and vary such regulations as it may fit respecting the keeping of any such register.

Section 101:- All cheques, promissory notes drafts, hundies, bills of exchange and other negotiable instruments and all receipts for moneys paid to the Company shall be signed drawn accepted or otherwise executed, as the case may be by the Director or Manager of the Company or by such the case may be by the Director or Manager of the Company or by such person and in such manner as the Board shall from time to time by resolution determine.

Section 103:- The Board may authorize or empower any Director or directors Managing director, Manager or Secretary of the Company either, by name in virtue of office or otherwise the officers or servants of the Company, or any other person or persons, either singly or jointly to exercise or perform all or any of powers (including the powers to sub delegate, authorities and duties conferred or imposed on the directors by law or Articles of Association, subject to such restrictions and conditions, if any and either generally or in specific cases as the Board may think proper subject to the provisions of the Act.

Section 105:- The Board shall provide a common seal for the purpose of the Company and from time to time destroy the same and substitute new seal in lieu thereof and shall provide for the safe custody of the seal for the time being. The seal of the Company shall not be affixed to any instrument except by the authority of resolution of the, Board or of a Committee of the Board authorized by it in that behalf and except in the presence of at least one Director or such officer of the Company as the Board may appoint for the purpose and such Director or officer shall sign every instrument to which the seal of the Company.

Section 106(i):-Subject to such directions as may from time to time be issued by the Government in this behalf, the Board may, before recommending any dividend, set aside out of the profits of the company such sums as it thinks proper as a reserve or reserves which shall, at the discretion of the Board be applicable for any purpose to which the profits of the Company may be properly applied, including provision for meeting contingencies or for equalizing dividends or for special dividends or for repairing, improving and maintaining any of the property of the Company and amortization of capital and such other purposes as the Directors shall in their absolute discretion think conducive to the interests of the Company and pending such application, think conducive to the interest of the company and pending such application may at the like discretion, be invested in such investments (other than shares of the Company) as the Board may from time to time, think fit and vary such investments and dispose of all or any part thereof for the benefit of the company.

Section 101(ii):-The Board may also carry forward any profits which it may think prudent not to divide without setting them aside as a reserve.

Section 107:-The Company in General Meeting may declare dividends but no dividend shall exceed the amount recommended by the Board.

Section 108:-No dividend shall be payable otherwise than out of the profits of the year or other period or any other, undistributed profits of the Company and no dividend shall carry interest as against the company.

Section 109:-The declaration of the directors as to the amount of net profits of the Company shall be conclusive.

Section 110:-The Board may from time to time pay to the members such interim dividends as appear to be justified by the profits of the Company.

Section 111(i):-Subject to the rights of persons, if any, entitled to shares with special rights as to dividends, all dividends shall be declared and paid according to the amounts paid or credited as paid on the share in respect of which the dividend is paid but if and so long as nothing is paid upon any of the shares in the company, dividend may be declared and paid according to the amounts of the shares.

Section 110(ii):-No amount paid and credited as paid on a share in advance of call shall be treated for the purposes of this regulation as paid on the share.

Section 110(iii):-All the dividend shall be apportioned and paid proportionately to the amount paid or credited as paid on the shares during any portion or portions of the period in respect of which the dividend is paid, but if any share is issued on terms providing that it shall rank for dividend as from a particular date such share shall rank for dividend accordingly.

Section 112:-The Board may deduct from any dividend payable to any member all moneys, if any presently payable by him to the Company, on account of calls or otherwise in relation to the shares of the Company.

Section 113(i):-Any dividend, interest or other moneys payable in cash in respect of shares may be paid by cheque or warrant sent through the post direct to the registered address of the holder or, in the case of joint holders, to the registered address of that one of the joint holders, who is first named on the registers of Members, or to such person and to such address as the holders or joint holders may in writing direct.

Section 113(i):-Every such cheque or warrant shall be made payable to the order of the person to whom it is sent.

Section 114:-Any of two or more joint holders of a share may give effectual receipts for any dividends, bonuses or other moneys payable in respect of such share.

Section 115:-Notice of any dividend that may have been declared shall be given to the persons entitled to share therein the manner mentioned in the Act.

Section 116(i):-The Company in General Meeting may, upon the recommendation of the Board resolve.

(a) That it is desirable to capitalize any part of the amount for the time being standing to the credit of any of the Company's General Reserve or any Reserve Fund or any amount standing to the credit of the profit and loss account or otherwise available for the distribution, and

(b) That such sum be accordingly set free for distribution in the manner specified in clause (ii) hereunder amongst the members who would have been entitled there to if distributed by way of dividends and in the same proportion.

(ii) The sum aforesaid shall not be paid in cash but shall be applied subject to the provision contained in clause (iii) either in or towards

(a) Paying of any amounts for the time being unpaid on any shares held by members' respectively'

(b) Pay up in full unissued shares or debentures of the Company to be allotted, distributed and credited as fully paid up to and amongst such members in the proportions aforesaid; or

(c) Party in the way specified in sub clause (a) and partly in that specified in sub clause (b)

(iii) A share premium account and a capital redemption, reserve fund may, for the purpose of this regulation, only be applied in the paying up of unissued shares to be issued to members of the Company as fully paid bonus shares.

(iv) The Board shall give effect to the resolution passed by the Company in pursuance of this regulation.

Section 117(i):-Whenever such a resolution as aforesaid shall have been passed the Board shall;

(a) make all appropriations and applications of the undivided profits resolved to be capitalized thereby, and all allotments and issues of fully paid shares or debentures, if any, and

(b) Generally do all acts and things required to give effect thereto.

(2) The Board shall have full powers;

(a) To make such provisions, by the issue of fractional certificates or by payment in cash or otherwise as it thinks fit in the case of shares or debentures becoming distributable infractions; and also.

(b) To authorize any persons to enter on behalf of the members entitled thereto, into an agreement with the company providing for the allotment to them, respectively credited as fully paid up of any further shares or debentures, to which they may be entitled upon such capitalization, or (as the case may require) for the payment by the company on their behalf by application thereto of their respective proportions of profits resolved to be capitalized of the amounts or any part of amounts remaining unpaid on their existing shares.

(3) Any agreement made under such authority shall be effective and binding on all members.

Section 118 (1)The Board shall from time to time determine whether and to what extent and at what time and places and under what conditions or regulations the accounts and books of the Company or any of them shall be open to the inspection of members not being Directors.

(2) No member, not being a director, shall have any right of inspecting any account or book or document of the Company except as conferred by law or authorized by the Board or by the Company in a General Meeting

Section 118:-The board shall cause to keep in accordance with Section 209 of the proper books of accounts with respect to;

(a) All sums of money received and expended by the Company and matters in respect of which the receipt and expenditure takes place

(b) All sales and purchases of goods by the company;

(c) The assets and liabilities of the Company.

(d) Necessary particulars relating to utilization of materials or labour or other items of costs as may be prescribed by the Central Government.

Section 120 (1) The books of accounts shall be kept at the registered office or such other place in India as the Board may decide and when the Board so decides, the Company shall, within seven days of the decision, with the Registrar a notice in writing giving the full address of that other place.

(2) The books of accounts of the Company shall be preserved in good order for a period of not less than eight years from the date of incorporation of the Company, and after the said period of eight years the books of accounts of the Company relating to a period of not less than eight years shall be preserved in good order.

Section 121:- (1) The books of account shall be open to inspection by any director during business hours.

(2) The books of accounts shall also be open to inspection by the Registrar or by any officer of Government authorized by the Central government in this behalf.

(3) The Boards shall from time to time, determine whether and to what extent, and at what times and places and under what conditions or regulations the books of accounts and books documents of the Company other than those referred to in Articles 120(2) and 121(1) or any of them shall be open to the inspection of the members not being Directors, and no member (not being a director) shall have any right of inspecting any books of accounts or documents of the Company except as conferred by law or authorized by the Board or by the Company in General Meeting.

Section 122:- At every Annual General Meeting, the Board shall lay before the Company a balance sheet and profit and loss account made up in accordance with the provisions of Section 210 of the Act and such balance sheet and profit and loss account shall comply with the requirements of Section 210, 211, 212, 215, 216 and 219 and of Schedule VI of the Act, so far, as they are applicable to the Company.

Section 123:- The Board of Directors shall cause to be made out and attached to every balance sheet a report with respect to the state of the Company's affairs, amounts if any, which they recommend should be paid by way of dividend and amount, if any which they propose to carry to the Reserve Fund, General Reserve or Reserve Account shown specifically on the balance sheet or to a Reserve Fund, General Reserve or Reserve Account to be shown specifically in a subsequent balance sheet. The Report shall be signed by the Chairman of the Board of Directors on behalf of the Directors if authorized shall be signed by such number of Directors as are required to sign the balance sheet and the profit and loss account by virtue of subsections (1) and (2) of section 215 of the Act.

Section 124:- Forms of the balance sheet and profit and loss account should be in accordance with the provisions of section 211 of the Act. The profit & loss account shall in addition to the matters referred to in Section 211 of the Act, show as arranged under the most convenient heads the amount of gross income, distinguishing the several sources from which it has been derived and the amount of gross expenditure distinguishing the expenses of the establishment, salaries and other like matters every item of expenditure fairly chargeable against the year's income shall be brought into account so that a just balance of profit and loss may be laid before the meeting and in cases where any item of expenditure which may in fairness be distributed over several years has been incurred in one year the whole amount of such item shall be stated with the addition of the reasons why only a portion of such expenditure is charged against the income of the year.

Section 125:- A copy of every balance sheet (including the profit and loss account the Auditor's Report and every document required by law to be annexed or attached to the balance sheet) shall, as provided by Section 219 of the Act, not less than twenty one day before the meeting be sent to every such member, debenture holder, trustee and other person to whom the same is required to be sent, by the said section of the Act.

Section 126:- The Company shall comply with Section 220 of the Act as to filing copies of the balance sheet and profit and loss account and documents required to be annexed or attached thereto with the Register

- Whether their meetings are open to the public?
No
- Whether the minutes of the meetings are open to the public?
No
- Place where the meetings if.
No
- Open to the public are available?
No
- **Committees:** (i) As per Section 95 of Memorandum of Articles of Association of PWRMDC; the BODs is competent to appoint any Committee and delegate powers to it. generally the following Committees are constituted in PWRMDC:
(i) Standing Committee (ii) Technical Committee (iii) Purchase and Disposal Committee.
- **(i) Standing Committee--Powers and Functions:** - The cases of promotion in respect of Gazetted officers (Group A&B) of the Corporation are considered and cleared and accordingly the minutes of the resolution of the meeting are submitted to the BODs of the PWRMDC for final decision.
- Whether their meetings are open to the public?
No
- Whether the minutes of the meetings are open to the public?
No
- Place where the meetings if.
No
- Open to the public are available?
No
- **(ii) Technical Committee--Powers and Functions :-**(i) The Project Estimates of Lining of Watercourses and Installation of Deep Tubewells of different Projects/Schemes are approved or disapproved accordingly.
(ii) The design/drawings of old/new Watercourses, Nakkas, Culverts etc are approved or disapproved accordingly.
(iii) The design/drawings of old/new Deep Tubewells& its components are approved or disapproved accordingly.
- Whether their meetings are open to the public?
No

- Whether the minutes of the meetings are open to the public?

No

- Place where the meetings if.

No

- Open to the public are available?

No

(iii) Purchase and Disposal Committee--Powers and Functions: - All the cases of Purchase and Disposal of goods, materials, Vehicles, Machinery etc beyond the sanctioning powers of the Managing Director are approved or disapproved by this Committee and thereafter the cases are put forwarded to the BODs for further decision.

- Whether their meetings are open to the public?

No

- Whether the minutes of the meetings are open to the public?

No

- Place where the meetings if.

No

- Open to the public are available?

No

9th Manual: Directory of Officers and Employees.

PUBLICATION OF INFORMATION REGARDING ITEMS SPECIFIED IN RULE 4(I)(B)(IX) OF THE RIGHT TO INFORMATION ACT 2005

PUNJAB WATER RESOURCES MANAGEMENT AND DEVELOPMENT CORPORATION; CHANDIGARH							
Sr. No.	Name of the Officer	Designation	Tel. Nos.		Mobile No.	Address	E-mail Address
			Office	Residence			
Head Office							
1	Er. Ravi Karan Singh Kahalon	Chairman	0172-2790790	---	9780400002	SCO 29- Sector 26, PWRMDC; Chandigarh	chairman@pwrmdc.com
2	Er. Baldev Singh Chopra,	Managing Director,	0172-2790790	-----	9814008368	SCO 29- Sector 26, PWRMDC; Chandigarh.	md@pwrmdc.com
3	Er. Surinder Singh Grewal,	Superintending Engineer (Planning& Vigilance)	0172-2793223	0172-2216264	9915260009	SCO 29- Sector 26, PWRMDC; Chandigarh.	se_planning@pwrmdc.com
4	Er. Ajay Kumar Sharma,	Divisional Engineer (Planning)	0172-2795560	-----	9815975533	SCO 29- Sector 26, PWRMDC; Chandigarh.	deplanningpwrmdc2014@gmail.com
5	Er. Adarsh Kumar Sharma	Divisional Engineer (Tubewell)	0172-2792966	0172-2570290	9872012351	SCO 29- Sector 26, PWRMDC; Chandigarh.	detpwrmdc@gmail.com
6	Er. Palwinder Kumar,	Divisional Engineer(Lining)	0172-2790630	-----	9915917786	SCO 29- Sector 26, PWRMDC; Chandigarh.	deliningpwrmdc@gmail.com
7	Er. H.S.Arora,	Divisional Engineer (Vigilance)	0172-2791287	-----	9814527212	SCO 29- Sector 26, PWRMDC; Chandigarh.	devigpwrmdc2014@ gmail.com
8	Er.Parmjeet Singh Athwal,	Divisional Engineer (Establishment) (C/H)	0172-2790235	-----	9888133602	SCO 29- Sector 26, PWRMDC; Chandigarh.	deesttpwrmdc2014@ gmail.com
Lining Circle No.1							
9	Er. Amarjit Singh,	Superintending Engineer (C/H)	01639-256197	0172-2268861	9417126662	Lining Circle No. 1 PWRMDC; Faridkot	se_faridkot@pwrmdc.com
10	Er. R.K Garg	Divisional Engineer,	01632-246212	---	9814908467	Lining Division No.1, PWRMDC; Ferozepur.	depwrmdcld1@gmail.com
11	Er. Baiwinder Kumar Garg ,	Divisional Engineer	01652-227115	----	9872403930	Lining Division No.2, PWRMDC; Mansa.	de2pwrmdc@gmail.com
12	Er. Jaila Ram Swan,	Divisional Engineer	01637-260936	---	8146006800	Lining Division No.3 PWRMDC; Malout.	de3pwrmdc@yahoo.in
13	Er. S.K.Goyal,	Divisional Engineer	01634-224666	---	9888867885	Lining Division No.4, PWRMDC; Abohar.	de4pwrmdc@gmail.com
Lining Circle No.2							
14	Er. S.K.Goyal ,	Superintending Engineer (C/H)	0164-2270293	-----	9888867885	Lining Circle No. 2 PWRMDC; Bathinda	se_bathinda@pwrmdc.com
15	Er. Som Chand Bansal,	Divisional Engineer	0161-2455451	-----	9417047145	Lining Division No.5, PWRMDC; Ludhiana.	de5pwrmdc@gmail.com
16	Er. R.S Mann.	Divisional Engineer	01651-220750	----	8146067788	Lining Division No.6, PWRMDC; Rampuraphul.	de6pwrmdc@gmail.com

17	Er. K.K Singla,	Divisional Engineer	0164-2211639	-----	9814206562	Lining Division No.7, PWRMDC; Bathinda.	de7pwrmdc@gmail.com
18	Er. Jasbinder Singh	Divisional Engineer	0164-2270925	-----	8146592446	Lining Division No.8, PWRMDC; Bathinda.	de8pwrmdc@gmail.com
Chandigarh Tubewell Circle							
19	Er.Bhagwant Singh Warar,	Superintending Engineer	0172-2707206	-----	9876716800	Chandigarh Tubewell Circle, PWRMDC; Chandigarh.	se_chandigarh@pwrmdc.com
20	Er, Harbans Singh ,	Divisional Engineer,	0172-2265629	-----	9814051640	Operation& Maintenance, Division, PWRMDC; Sahibzada Ajit Singh Nagar.	deopmmohali@gmail.com
21	Er, Satish Kumar	Divisional Engineer,	01881-222866	-----	9815787755	Tubewell Construction Division, PWRMDC; Ropar	de_tcd_ropar@hotmail.com
22	Er, Amarjit Singh,	Divisional Engineer	0161-2520084	-----	9417126662	Tubewell & Store Division, PWRMDC; Ludhiana	dets.pwrmdc@gmail.com
23	Er. R.K.Goyal	Divisional Engineer	01675-253038	-----	9417340403	Tubewell Division, PWRMDC; Malerkotla.	detdmkl@gmail.com
Hoshiarpur Tubewell Circle							
24	Er. Ashok Kumar Juneja,	Superintending Engineer	01882-241219	-----	8146443300	Hoshiarpur Tubewell Circle PWRMDC; Hoshiarpur.	se_hoshiarpur@pwrmdc.com
25	Er. D.K.Garg,	Divisional Engineer	01882-222763	-----	9501024583	Operation & Maintenance, Division, PWRMDC; Hoshiarpur.	opmdivisionhoshiarpur@gmail.com
26	Er. D.K.Garg,	Divisional Engineer	01882-223110	-----	9501024583	Tubewell Construction, Division, PWRMDC; Hoshiarpur.	depwrmdclf@gmail.com
27	Er. Jai Parkesh,	Divisional Engineer	0181-2642897	-----	9814685736	Tubewell Division, PWRMDC; Jalandhur.	dejalandhar0181@gmail.com
28	Er. Kulwant Singh,	Divisional Engineer	0186-2100727	-----	8146537754	Tubewell Division, PWRMDC; Pathankot.	depwrmdcptk@gmail.com
Hydrogeological Wing							
29	Shri Anil Kumar Bhutani	Senior Hydrogeologist	0172-2228120	0172-2727690	9463292276	Hydrogeological Wing, PWRMDC; Sahibzada Ajit Singh Nagar.	shhydrowingpwrmdc2015@gmail.com
Research Wing							
30	Er. T.K.Kakkar	Divisional Engineer/Research Office	-----	-----	9501117758	Lining Circle No. 2 PWRMDC; Bathinda	ropwrmdcc2bth@gmail.com
31	Er. R.K. Singla	Research Office(C/H)	-----	-----	9463587099	Lining Circle No. 1 PWRMDC; Faridkot	ropwrmdcc1fdk@gmail.com
F A Branch							
1	Shri R.K Anand	Financtal Advisor	0172-2790767	--	9814387422	SCO 29- Sector 26, PWRMDC; Chandigarh	rkananddata@yahoo.com

10th Manual: Monthly Remuneration received by officers & employees including system of compensation.
PUBLICATION OF INFORMATION REGARDING ITEMS SPECIFIED IN RULE 4(I)(B)(X) OF THE RIGHT TO INFORMATION ACT 2005

- **System of Compensation as provided by in its regulations: As per Workman Compensation Act-1923**
- **Pay Scale of PWRMDC'S Employees**

Sr. No.	Designation of Post	Pay Scale	Sr. No.	Designation of Post	Pay Scale	Sr. No.	Designation of Post	Pay Scale
1.	Managing Director	37400-67000	24.	Junior Draftsman	5910-20200	47.	Surveyor	5910-20200
2.	Superintending Engineer	37400-67000	25.	Senior Assistant	10300-34800	48.	Irrigation Booking Clerk	5910-20200
3.	Divisional Engineer	15600-39100	26.	Sr. Scale Stenographer	10300-34800	49.	Head Revenue Clerk	10300-34800
4.	Sub Divisional Engineer	15600-39100	27.	Steno Typist	10300-34800	50.	Assistant Revenue Clerk	5910-20200
5.	Research Officer	15600-39100	28.	Junior Assistant /Clerk	10300-34800	51.	Ferro-printer	5910-20200
6.	Assistant Research Officer	10300-34800	29.	Masson	5910-20200	52.	Carpenter	5910-20200
7.	Law Officer	10300-34800	30.	Artificer	5910-20200	53.	Head Driller	5910-20200
8.	Financial Advisor	15600-39100	31.	Electrician	5910-20200	54.	Assistant Driller	5910-20200
9.	Dy. Chief Account Officer	10300-34800	32.	Sr. Technical Assistant	10300-34800	55.	Store Munshi	5910-20200
10.	Assistant Controller(S,F,W&A)	10300-34800	33.	Driver	5910-20200	56.	Machine Operator	5910-20200
11.	Senior Hydrogeologist	15600-39100	34.	Chargeman/Fitter/Mechanic	5910-20200	57.	Daftri	4900-10680
12.	Junior Hydrogeologist	10300-34800	35.	Work Mistri / Work Munshi	5910-20200	58.	Peon	4900-10680
13.	Junior Geophysicist	10300-34800	36.	Supervisor / Operator	5910-20200	59.	Chowkidar	4900-10680
14.	Superintendent Gr.-I	10300-34800	37.	Driller	5910-20200	60.	Sweeper	4900-10680
15.	Circle Head Draftsman	10300-34800	38.	Turner	5910-20200	61.	Mali	4900-10680
16.	Divisional Head Draftsman	10300-34800	39.	Research Assistant	10300-34800	62.	T-Mate / Beldar / Mate	4900-10680
17.	Zilledar	10300-34800	40.	Lab Assistant	5910-20200	63.	Assistant Lab Attendant	4900-10680
18.	Superintendent Gr.-II	10300-34800	41.	Lab Attendant	5910-20200	64.	Jamadar	4900-10680
19.	Divisional Account Officer	10300-34800	42.	Pump / Compressor Operator	5910-20200	65.	Cycle Swar	4900-10680
20.	SAS Superintendent/ Section Officer	10300-34800	43.	Photostat Operator /Duplicating Machine Operator	5910-20200	66.	Dak runner	4900-10680
21.	Personal Assistant	10300-34800	44.	Welder	5910-20200	67.	Cleaner	4900-10680
22.	Junior Engineer	10300-34800	45.	Gatekeeper	5910-20200	68.	R. Meter Attendant	4900-10680
23.	Draftsman	10300-34800	46.	Workshop Operator	5910-20200			

MONTHLY REMUNERATION OF THE GAZETTED STAFF

Sr. no.	Name& Designation	BP	GP	Total	DA	Wages	CCA	HRA	FMA	Convey Allow.	Mob Allow	Handicap Allow.	LTA	Gross	GPF	EPF	Vol EPF	NPS	GISLI	House Rent	Income Tax	Total Deductions	Net Salary
1	Baldev Singh Chopra, MD	61320	10000	71320	64188	135508	120	14264	500	0	500	0		150892	15070	0	0	0	120	0	30000	45190	105702
2	Surinder Singh Grewal SE	57980	8700	66680	60012	126692	120	13336	500	0	0	0	0	140648	0	15203	15203	0	120	0	25000	55526	85122
3	Palwinder Kumar DE	29570	7600	37170	33453	70623	120	7434	500	0	500	0	0	79177	3000	0	0	0	0	0	7000	10000	69177
4	Amarjit Singh DE	54810	8600	63410	57069	120479	120	12682	500	0	500	0	0	134281	0	14457	0	0	0	0	22000	36457	97824
5	Ajay Kumar Sharma DE	30080	7600	37680	33912	71592	120	7536	500	0	500	600	0	80848	0	8591	8591	0	0	0	5600	22782	58066
6	Adarsh Kumar Shama DE	51460	8600	60060	54054	114114	120	12012	500	0	0	0	0	126746	0	13694	20000	0	120	0	20000	53814	72932
7	Kulwant Singh DE	29880	7600	37480	33732	71212	120	7496	500	0	500	0	0	79828	0	8545	0	0	0	0	9200	17745	62083
8	Paramjit S. Atwal DE	29100	7600	36700	33030	69730	120	7340	500	0	500	0	0	78190	0	8368	8368	0	90	0	9200	26026	52164
9	Rajinder Kumar SDE	26610	6600	33210	29889	63099	120	6642	500	0	500	0	0	70861	0	7572	0	0	0	0	6200	13772	57089
10	Sanjeev Kumar SDE	26990	6600	33590	30231	63821	120	6718	500	0	500	0	1994	73653	0	7659	0	0	90	0	6200	13949	59704
11	Gurcharanjit Singh SDE	29080	6600	35680	32112	67792	120	7136	500	0	500	0	0	76048	0	8135	0	0	60	0	6200	14395	61653
12	Nirmal Singh SDE	31570	6600	38170	34353	72523	120	7634	500	0	500	0	0	81277	0	8703	15000	0	90	0	6800	30593	50684
13	Rakesh Prashar SDE	26990	6600	33590	30231	63821	120	6718	500	0	500	0	0	71659	0	7659	7659	0	0	0	12500	27818	43841
14	Anil Kumar, SDE	26990	6600	33590	30231	63821	120	6718	500	0	500	0	0	71659	0	7659	0	0	0	0	5000	12659	59000
15	Sukhwinder Singh JE	19810	5400	25210	22689	47899	120	5042	500	0	500	0	1994	56055	0	5748	0	0	0	0	3600	9348	46707
16	Ramzan Ali Muleem JE	14000	4800	18800	16920	35720	120	3760	500	0	300	0	0	40400	0	4286	4286	0	60	0	1400	10032	30368
17	Raj Kumar Anand FA	34450	8400	42850	38565	81415	120	0	500	0	500	0	0	82535	15000	0	0	0	120	203	9000	24323	58212
18	Naresh Kaushal ACFA	23290	5000	28290	25461	53751	120	0	500	800	500	0	0	55671	10000	0	0	0	120	0	4600	14720	40951
19	Ashima ACFA	19680	5400	25080	22572	47652	120	5016	500	800	500	0	0	54588	0	0	0	4765	120	0	3500	8385	46203

MONTHLY REMUNERATION OF THE TECHNICAL STAFF .

Sr. no.	Name& Designation	BP	GP	SGP	Total	DA	Wages	CCA	HRA	FMA	Sp/HA	Mobile	FPA	WA	GROSS	EPF	Vol EPF	HBAI	GSLI	Inc.Tax	NetDedu	NetPay
1	Yadwinder Pal, CHD (L.O.)	29350	4800	150	34300	30870	65170	120	6860	500	0	300	0	0	72950	7820	0	0	60	6000	13880	59070
2	Ravinder Kumar,DHD	28580	4800	0	33380	30042	63422	120	6676	500	0	0	0	0	70718	7611	5000	0	60	6000	18671	52047
3	Anil Kumar,DHD	27610	4600	150	32360	29124	61484	120	6472	500	0	300	210	0	69086	7378	7378	0	60	3000	17816	51270
4	Rakesh Kumar,DHD	27620	4600	150	32370	29133	61503	120	6474	500	0	300	0	0	68897	7380	0	0	60	1000	8440	60457
5	Piara Singh,DHD	27570	4600	150	32320	29088	61408	120	6464	500	600	300	210	0	69602	7369	4000	0	0	4800	16169	53433
6	Karnail Singh, D/Man	19690	4400	0	24090	21681	45771	120	4818	500	0	300	210	0	51719	5493	5493	0	60	2500	13546	38173
7	Neeraj Verma,, D/Man	16890	4200	0	21090	18981	40071	120	4218	500	0	300	0	0	45209	4809	0	0	60	700	5569	39640
8	Gurjeet Kaur,, D/Man	16890	4200	0	21090	18981	40071	120	4218	500	0	300	0	0	45209	4809	0	0	60	2000	6869	38340
9	Sunil Walia,, D/Man	18160	4200	0	22360	20124	42484	120	4472	500	0	300	0	0	47876	5098	10000	0	60	2000	17158	30718
10	Jagdish Chandel,D/Man	17500	4200	0	21700	19530	41230	120	4340	500	0	300	0	0	46490	4948	4948	0	0	1400	11296	35194
11	Daljinder Kaur, D/Man	18840	4200	0	23040	20736	43776	120	4608	500	0	300	0	0	49304	5253	0	0	0	2000	7253	42051
12	Surinder Singh,D/man	14530	4200	0	18730	16857	35587	120	3746	500	0	300	0	0	40253	4270	4270	0	60	1300	9900	30353
13	Gurmeet Singh, Patwari (L.A.)	19640	3200	0	22840	20556	43396	120	0	500	100	250	0	0	44366	5208	5208	3500	0	1600	15516	28850
14	Bakshish Singh,Driver	16100	2800	0	18900	17010	35910	120	3780	500	1400	250	0	60	42020	4309	4309	3000	0	1500	13118	28902
15	Kuldeep Chand, Driver	14830	2800	0	17630	15867	33497	120	3526	500	1400	250	210	60	39563	4020	5000	0	0	1100	10120	29443
16	Veer Singh,Driver	14190	2400	0	16590	14931	31521	120	3318	500	1400	250	210	60	37379	3783	3783	3400	30	1000	11996	25383
17	Ram Kumar,Driver	12210	2400	0	14610	13149	27759	120	2922	500	1400	250	0	60	33011	3331	5000	0	30	400	8761	24250
18	Charanjit Kaur,P.M.O.	6150	1900	0	8050	7245	15295	120	1610	500	0	250	0	0	17775	1835	0	0	30	0	1865	15910

MONTHLY REMUNERATION OF THE HYDROWING STAFF.

Sr. No.	Name&Designation	Total	DA	Wages	CCA	HRA	FMA	Mobile Allow.	Spl. Allow.	Family P.	Wash.A llow.	Water Allow.	Gross	EPF	Vol. EPF	GISL	HBA I	Scooter/Car (P)	Festival Advance	Income Tax	Total Deductions	Net Salary
1	Anil Kumar Bhutani Senior Hydrogeologist	43770	39393	83163	120	8754	500	500	0	0	0	0	93037	9980	9980	90	0	0	0	10000	30050	62987
2	V.K.Kampani Jr. Hydrogeologist	42080	37872	79952		5260	500	500	0	0	0	0	86212	9594	9594	90	0	0	0	8000	27278	58934
3	M.L.Gupta Jr.Geophysicist	38100	34290	72390	120	7620	500	500	0	0	0	0	81130	8687	8687	90	0	0	0	8000	25464	55666
4	R.S.Gupa Jr. Hydrogeologist	32940	29646	62586		4118	500	500	0		0		67704	7510	7510	60	0	0	0	5000	20080	47624
5	D.K. Arora STA	31000	27900	58900	120	6200	500	300	0	0	0	0	66020	7068	7068	60	0	0	0	5000	19196	46824
6	Anil Kumar Sharma STA	31000	27900	58900	120	6200	500	300	0	0	0	0	66020	7068	0	60	0	0	0	5200	12328	53692
7	Ajeet Singh RA	33100	29790	62890	120	6620	500	300	0	0	0	0	70430	7547	7547	60	3500	2000	0	5400	26054	44376
8	Sunil Shahi D/M	25890	23301	49191	120	5178	500	300	0	0	0	0	55289	5903	5903	60	0	0	0	2400	14266	41023
9	Roshan Lal LA	17380	15642	33022	120	3476	500	250	0	210	0	0	37578	3963	3963	60	0	0	0	1000	8986	28592
10	Purnima Sohi LA	17380	15642	33022	120	0	500	250	0	0	0	0	33892	3963	3963	60	0	0	0	700	8686	25206
11	Surjit Singh Driver	18480	16632	35112		2310	500	250	1400	0	60	0	39632	4213	4213	0	0	0	0	1000	9426	30206
12	Ashok Kumar RMA	14440	12996	27436	120	2888	500	250	300	0	60	0	31554	3292	3292	0	0	0	1000	500	8084	23470
13	Daljit Kaur Peon	12990	11691	24681		1624	500	250	300	0	60	10	27425	2962	2962	30		0	1000	0	6954	20471
14	Des Raj Peon	15080	13572	28652	120	3016	500	250	300	0	60	10	32908	3438	3438	30	0	0	1000	0	7906	25002
15	Kartar Singh Peon	14380	12942	27322		1798	500	250	300	210	60	30	30470	3279	3279	0	0	0	1000	100	7658	22812
16	Chotu Kumar Singh, Peon	6950	6255	13205	120	1390	500	250	300	0	60	10	15835	1585	0	0	0	0	0	0	1585	14250

MONTHLY REMUNERATION OF CLERICAL STAFF-I.

Sr.No.	Name& Designation	BP	GP	Total	DA	Wages	CCA	HRA	FMA	Con	Mobile	FP/ S.P	Gross	EPF	VOL EPF	HBA I	HBAII	HBA Interest	Scooter(P)	Scooter(I)	GSLI	LIC	Income Tax	Deductions	Net Paid	
1	Balbir Kaur, Supdt.	28370	4800	33170	29853	63023	120	6634	500	700	300	0	71277	7563	7000	0	0	0	0	0	60	0	1100	15723	55554	
2	Paramjit Kaur, Supdt	20720	4800	25520	22968	48488	120	5104	500	700	300	0	55212	5819	5819	0	0	0	0	0	60	0	8500	20198	35014	
3	Suman Ohri,Supdt	23420	4800	28220	25398	53618	120	5644	500	700	300	0	60882	6434	15000	0	0	0	0	0	60	0	3500	24994	35888	
4	Gurvinder Singh,Supdt.	27620	4800	32420	29178	61598	120	6484	500	700	300	0	69702	7392	0	0	0	0	0	0	60	0	5800	13252	56450	
5	Suresh Kumar, Supdt	26220	4800	31020	27918	58938	120	6204	500	700	300	0	66762	7073	7000	6000	0	0	0	0	60	0	5500	25633	41129	
6	Prabha Kumari,Supdt.	23420	4800	28220	25398	53618	120	5644	500	700	300	0	60882	6434	3000	0	0	0	0	0	0	0	0	3500	12934	47948
7	Vijay Paul Verma,Supdt	23420	4800	28220	25398	53618	120	5644	500	700	300	0	60882	6434	0	0	4000	0	0	0	60	0	2000	12494	48388	
8	Ragbir Singh,Supdt	20720	4800	25520	22968	48488	120	5104	500	700	300	0	55212	5819	5819	0	0	0	400	0	60	0	2500	14598	40614	
9	Neelam Chauhan	27620	4800	32420	29178	61598	120	6484	500	600	300	0	69602	7392	7392	0	0	0	0	0	60	0	5000	19844	49758	
10	Savita Serhi,SSG	25750	4600	30350	27315	57665	120	6070	500	600	300	0	65255	6920	18000	0	0	0	0	0	60	0	4800	29780	35475	
11	Som Nath, SSG	23210	4600	27810	25029	52839	120	5562	500	600	250	0	59871	6341	0	0	0	0	0	0	60	0	3200	9601	50270	
12	Shashi Bala Daniya, Sr. Asst	22290	4400	26690	24021	50711	120	5338	500	600	300	0	57569	6085	10000	0	0	0	0	0	0	0	0	4000	20085	37484
13	Sunita Chohan, Sr. Asst	22260	4400	26660	23994	50654	120	5332	500	600	300	0	57506	6078	6078	0	0	0	0	0	0	0	0	3500	15656	41850
14	Baljit Singh, Sr. Asst	22370	4400	26770	24093	50863	120	5354	500	600	300	0	57737	6104	12000	0	0	0	0	0	60	0	2500	20664	37073	
15	Praveen Gill,Sr. Asst	18330	4400	22730	20457	43187	120	4546	500	600	300	0	49253	5182	7000	0	3300	2220	0	0	60	0	2500	20262	28991	
16	Hem Raj,Sr. Asst	14790	4400	19190	17271	36461	120	3838	500	600	300	0	41819	4375	4375	0	0	0	0	0	60	0	1500	10910	31509	
17	Shashi Bala Kapoor, Sr. Asst	18300	4400	22700	20430	43130	120	0	500	600	300	0	44650	5176	10000	0	0	0	0	0	0	0	0	0	15176	29474
18	Mohinder Pal, Sr. Asst	17630	4400	22030	19827	41857	120	4406	500	600	300	0	47783	5023	0	0	0	0	0	0	0	0	0	1500	6523	41260
19	Bimal Shahi,Sr. Asst	17630	4400	22030	19827	41857	120	4406	500	600	300	0	47783	5023	9900	0	0	0	0	0	60	0	2200	17183	30600	
20	Sanyogta Devi, Sr. Asst	13550	4400	17950	16155	34105	120	3590	500	600	300	0	39215	4093	10000	0	0	0	0	0	60	0	1200	15353	23862	
21	Rajinder Kaur, Sr. Asst	17660	4400	22060	19854	41914	120	4412	500	600	300	0	47846	5030	0	0	0	0	0	0	0	0	0	3000	8090	39816
22	Santosh Sharma, Sr. Asst	21950	4400	26350	23715	50065	120	5270	500	600	300	0	56855	6008	10000	0	0	0	0	0	0	0	0	2600	18608	38247
23	Ravinder Singh, Sr. Asst	22280	4400	26680	24012	50692	120	5336	500	600	300	0	57548	6083	12000	0	0	0	0	0	60	0	4000	22143	35405	
24	Baljit Kaur, Sr. Asst	17660	4400	22060	19854	41914	120	4412	500	600	300	0	47846	5030	14000	0	0	0	0	0	60	0	1600	20690	27156	
25	Tej Pal Singh, Cashier	17630	4400	22030	19827	41857	120	4406	500	600	300	710	48493	5023	8000	0	0	0	0	225	60	0	2200	15508	32985	
26	Neelam Malik, Sr. Asst	17660	4400	22060	19854	41914	120	4412	500	600	300	0	47846	5030	6000	0	3400	0	400	0	60	0	1500	16390	31456	
27	Gurbux Singh, JA	16980	3600	20580	18522	39102	120	4116	500	500	250	0	44588	4692	4692	0	0	0	0	0	0	0	0	2500	11884	32704

MONTHLY REMUNERATION OF CLERICAL STAFF-II.

Sr.no.	Name& Designation	BP	GF	Total	DA	Wages	CCA	HRA	FMA	Convy	Mob	SP	Gross	EPF	Vol EPF	HBA I	HBAII	HBA Int.	Sec.Int	GSLI	LIC	I.T.	Deduc.	Net Paid
1	Pawan Kumari Jr. Asstt	11950	3600	15550	13995	29545	120	3110	500	500	250	0	34025	3545	3545	0	0	0	0	60	0	700	7850	26175
2	Reena Ahuja Jr. Asstt	11490	3600	15090	13581	28671	120	3028	500	500	250	0	33059	3441	3441	0	0	0	400	60	0	600	7942	25117
3	Gaganpreet Kaur Jr. Asstt	10830	3600	14430	12967	27417	120	2886	500	500	250	0	31673	3290	0	0	0	0	0	60	0	400	3750	27523
4	Kuldeep Kaur Jr. Asstt	10830	3600	14430	12967	27417	120	2886	500	500	250	0	31673	3290	3290	0	0	0	0	60	0	300	6940	24733
5	Ram Lal Jr. Asstt	15610	3600	19210	17289	36499	120	3842	500	500	250	0	41711	4380	4000	4000	2000	0	0	60	0	1200	15640	26071
6	Bir Singh Jr. Asstt	12580	3600	16180	14562	30742	120	3236	500	500	250	0	35348	3689	5000	0	0	0	0	60	0	700	5449	25895
7	Mankanwal Singh Jr. Asstt	11720	3600	15320	13788	29108	120	3064	500	500	250	0	33542	3493	0	0	0	0	0	60	0	400	3953	29589
8	Dharanajay Chaubey Jr. Asstt	13480	3600	17080	15572	32452	120	3416	500	500	250	0	37238	3894	7000	0	0	0	0	60	319	800	12073	25165
9	Kuldeep Singh Jr. Asstt	11720	3600	15320	13788	29108	120	3064	500	500	250	0	33542	3493	0	0	0	0	400	60	0	600	4533	28969
10	Jatwant Rawat Jr. Asstt	13880	3600	17480	15732	33212	120	3496	500	500	250	210	38288	3985	3985	0	2400	630	0	60	619	700	12379	25909
11	Ravinder Kumar Jr. Asstt	11720	3600	15320	13788	29108	120	3064	500	500	250	0	33542	3493	3493	0	0	0	0	60	414	1200	8660	24882
12	Devinder Singh Jr. Asstt	10830	3600	14430	12967	27417	120	2886	500	500	250	0	31673	3290	3290	0	0	0	0	60	0	500	7140	24533
13	Chairman Singh Jr. Asstt	10830	3600	14430	12967	27417	120	2886	500	500	250	0	31673	3290	3290	0	0	0	0	60	0	300	6940	24733
14	Baldeep Kaur Jr. Asstt	10830	3600	14430	12967	27417	120	2886	500	500	250	0	31673	3290	6000	0	0	0	0	60	0	300	9650	22023
15	Amarjit Singh Jr. Asstt	10830	3600	14430	12967	27417	120	2886	500	500	250	0	31673	3290	0	0	0	0	0	60	0	800	4150	27523
16	Yadwinder Singh Jr. Asstt	10830	3600	14430	12967	27417	120	2886	500	500	250	0	31673	3290	0	0	0	0	0	60	0	200	3550	28123
17	Beke Jr. Asstt	11720	3600	15320	13788	29108	120	3064	500	500	250	0	33542	3493	0	0	0	0	0	60	0	500	7340	25257
18	Jaswinder Pal Jr. Asstt	11270	3600	14870	13388	28253	120	2974	500	500	250	0	32597	3390	3390	0	0	0	0	60	0	700	7045	26496
19	Mandeep Singh, Jr. Asstt	11720	3600	15320	13788	29108	120	3064	500	500	250	0	33542	3493	3493	0	0	0	0	60	0	500	7340	25257
20	Sumeet Singh, Clerk	11130	3200	14330	12897	27227	120	2866	500	400	250	75	31438	3267	0	0	0	0	0	60	0	250	3517	27921
21	Ravi Chand, Clerk	11130	3200	14330	12897	27227	120	2866	500	400	250	75	31438	3267	0	0	0	0	0	60	0	400	3727	27711
22	Bjendra Singh, Clerk	11130	3200	14330	12897	27227	120	2866	500	400	250	0	31363	3267	0	0	0	0	0	60	0	500	3827	27536
23	Mandeep Singh, Clerk	11130	3200	14330	12897	27227	120	2866	500	400	250	75	31438	3267	8267	0	0	0	0	60	0	500	7094	24344
24	Manjeet Singh, Clerk	11130	3200	14330	12897	27227	120	2866	500	400	250	0	31363	3267	3267	0	0	0	0	60	0	200	6794	24569
25	Mukhtiyar Singh, Clerk	13280	3200	16480	14832	31312	120	3296	500	400	250	210	36088	3757	3757	0	3000	1170	0	60	0	500	12244	23844
26	Rajinder Singh, Clerk	12580	3200	15780	14202	29982	120	3156	500	400	250	0	34408	3598	0	0	0	0	0	60	0	900	4558	29850
27	Sarvpreet Singh, Clerk	11130	3200	14330	12897	27227	120	2866	500	400	250	0	31363	3267	0	0	0	0	0	60	0	600	3867	27496
28	Manoj Kumar, Clerk	11130	3200	14330	12897	27227	120	2866	500	400	250	0	31363	3267	0	0	0	0	0	60	0	800	4067	27296

MONTHLY REMUNERATION OF THE CLASS IV STAFF.

Sr. no.	Name& Designation	Total	DA	Wages	CCA	HRA	FMA	Conv.	Mob	Spl./Hand/D aftri	FP	WA	Water Allow.	Gross	EPF	Vol. EPF	GISLI	HBA I	HBA II	HBA Interest	Festival Loan	Scooter (P)	UC	Income Tax	Total Deductions	Net Salary
1	Yam Bahadur, Chowkidar	15080	13572	28652	120	3016	500	300	250	400	210	60	0	33508	3438	3438	0	0	0	0	1000	0	0	600	8476	25032
2	Prem Chand, Daftri	15200	13680	28880	120	3040	500	300	250	0	210	60	10	33370	3466	6000	0	0	2000	0	1000	0	0	0	12466	20904
3	Pritam Singh, Daftri	16070	14463	30533	120	3214	500	300	250	40	0	60	0	35017	3664	6000	30	3200	0	0	1000	0	0	600	14494	20523
4	Ramesh Chander, Daftri	15150	13635	28785	120	3030	500	300	250	640	210	60	0	33895	3454	3454	30	2500	2200	0	1000	0	0	100	12738	21157
5	Harish Pathak, Daftri	15830	14247	30077	120	3166	500	300	250	40	0	60	0	34513	3609	6000	30	0	0	0	1000	0	0	0	10639	23874
6	Pai Singh, Daftri	15080	13572	28652	120	3016	500	300	250	0	210	60	10	33118	3438	3338	30	2500	2600	0	1000	0	0	400	13306	19812
7	Mohan Singh, Daftri	14640	13176	27816	120	2928	500	300	250	0	0	60	10	31984	3338	4000	30	0	0	0	1000	0	0	0	8148	23836
8	Dharam Singh, Daftri	16430	14787	31217	120	3286	500	300	250	0	210	60	40	35983	3746	6000	30	0	0	0	1000	0	0	0	10776	25207
9	Hari Ram, Daftri	15200	13680	28880	120	3040	500	300	250	0	210	60	10	33370	3466	6000	30	3150	0	0	1000	0	0	400	14046	19324
10	Balbir Singh, Peon	15080	13572	28652	120	3016	500	300	250	0	210	60	10	33118	3438	8000	30	0	0	0	1000	0	0	400	12868	20250
11	Jadu Ram, Zamadar	14640	13176	27816	120	2928	500	500	250	0	210	60	10	32194	3338	8000	30	0	0	0	1000	0	3104	300	13772	18422
12	Ram Lal, Peon	15080	13572	28652	120	3016	500	300	250	0	0	60	10	32908	3438	6000	30	0	2000	0	1000	650	319	400	13837	19071
13	Keshav Ram, Peon	15080	13572	28652	120	3016	500	300	250	0	210	60	10	33118	3438	5000	30	0	2600	660	1000	0	0	500	13228	19890
14	Ravinder Singh, Peon	14720	13248	27968	120	2944	500	300	250	0	0	60	10	32152	3356	9000	0	0	0	0	1000	0	308	300	9912	21694
15	Khem Ram, Peon	14360	12924	27284	120	2872	500	300	250	0	210	60	10	31606	3274	5000	30	0	0	0	1000	0	263	200	12871	17853
16	Ranjit Singh, Peon	13940	12546	26486	120	2788	500	300	250	0	210	60	10	30724	3178	5000	30	0	0	0	1000	0	0	0	9905	17816
17	Swarna Devi, Peon	12610	11349	23959	120	2522	500	300	250	0	0	60	10	27721	2875	6000	30	0	0	0	1000	0	0	0	9905	17816
18	Varinder Singh, Peon	14720	13248	27968	120	2944	500	300	250	0	210	60	10	32362	3356	7000	30	3500	0	0	1000	0	400	400	15686	16676
19	Radhika Devi, Peon	14720	13248	27968	120	2944	500	300	250	0	0	60	10	32152	3356	3356	0	0	0	0	1000	0	486	500	8698	23454
20	Gulab Singh, Peon	14720	13248	27968	120	2944	500	300	250	0	0	60	10	32152	3356	6000	30	2700	800	0	1000	0	0	0	9248	18158
21	Deep Chand, Peon	12360	11124	23484	120	2472	500	300	250	0	210	60	10	27406	2818	5000	30	0	0	0	1000	0	303	0	11014	14922
22	Keeri Devi, Peon	11760	10584	22344	120	2352	500	300	250	0	0	60	10	25936	2681	7000	30	0	0	0	1000	0	0	0	7868	24116
23	Chhatar Singh, Peon	14640	13176	27816	120	2928	500	300	250	0	0	60	10	31984	3338	3500	30	0	0	0	1000	0	0	0	2735	14486
24	Ajay Kumar, Peon	7610	6849	14459	120	1522	500	300	250	0	0	60	10	17221	1735	0	0	0	0	0	1000	0	0	0	2632	13644
25	Mulayam, Peon	7160	6444	13604	120	1432	500	300	250	0	0	60	10	16276	1632	0	0	0	0	0	1000	0	0	0	2632	13644
26	Gulab Singh, Peon	14720	13248	27968	120	2944	500	300	250	0	0	60	10	32152	3356	7000	0	0	0	0	0	0	0	300	10656	21496
27	Sobat Singh, Peon	14720	13248	27968	120	2944	500	300	250	0	210	60	10	32362	3356	7000	30	1450	2200	0	1000	0	326	300	15662	16700
28	Vijay Kumar, Peon	6950	6255	13205	120	1390	500	300	250	0	0	60	10	15835	1585	0	0	0	0	0	0	0	0	0	1585	14250
29	Poonam Devi, Peon	12610	11349	23959	120	2522	500	300	250	0	0	60	10	27721	2875	5000	30	0	0	0	1000	0	0	0	8905	18816
30	Jabhar Singh, Peon	15150	13635	28785	120	3030	500	300	250	0	210	60	10	33265	3454	6000	30	620	3000	0	1000	0	0	450	14554	18711
31	Pawan Khansal, Peon	7610	6849	14459	120	1522	500	300	250	0	0	60	10	17221	1735	0	30	0	0	0	1000	0	0	0	2765	14456
32	Data Ram, Peon	14720	13248	27968	120	2944	500	300	250	0	210	60	10	32362	3356	5000	30	1700	2300	0	1000	0	369	400	14155	18207
33	Narain Dass, Peon	7610	6849	14459	120	1522	500	300	250	0	0	60	10	17221	1735	1735	0	0	0	0	1000	0	0	0	4470	12751
34	Rajesh Kumar, Peon	8050	7245	15295	120	1610	500	300	250	0	0	60	10	18145	1835	0	30	0	0	0	1000	0	0	0	2865	15280
35	Balwinder Kaur, Peon	13320	11988	25308	120	2664	500	300	250	0	0	60	10	29232	3037	3037	0	2500	0	0	1000	0	0	100	9674	19538
36	Sham Sunder, Peon	15080	13572	28652	120	3016	500	300	250	0	0	60	10	32908	3438	7500	30	1500	0	0	0	0	0	400	12868	20940
37	Harmesh Singh, Peon	14720	13248	27968	120	2944	500	300	250	0	210	60	10	32362	3356	6000	30	0	0	0	1000	0	0	300	10686	21676
38	Inderjit Singh, Peon	14720	13248	27968	120	2944	500	300	250	0	0	60	10	32152	3356	6000	30	0	0	0	1000	0	0	300	10686	21466
39	Phool Singh, Peon	14720	13248	27968	120	2944	500	300	250	0	0	60	10	32152	3356	5000	30	0	0	0	1000	0	0	500	9686	22466
40	Roop Lal, Peon	15480	13932	29412	120	3036	500	300	250	0	210	60	10	33958	3529	6000	30	0	0	0	1000	0	0	300	10859	23099
41	Chandan Ram, Peon	14720	13248	27968	120	2944	500	300	250	0	210	60	10	32362	3356	3356	30	510	2000	0	1000	400	592	0	11244	21118
42	Sahib Singh, Peon	14720	13248	27968	120	2944	500	300	250	0	0	60	10	32152	3356	4000	30	0	0	0	1000	0	0	400	8786	23366
43	Karam Singh, Dakrunner	15080	13572	28652	120	3016	500	300	250	0	210	60	0	33108	3438	6000	30	2500	1500	0	1000	0	0	400	14868	18240
44	Jagdamba Parsad, Peon	14720	13248	27968	120	2944	500	300	250	0	210	60	10	32362	3356	8000	30	0	0	0	1000	0	0	300	12686	19676
45	Jai Singh, Sweeper	14720	13248	27968	120	2944	500	300	250	0	0	60	0	32142	3356	5000	0	0	0	0	1000	0	0	400	9756	22386
46	Krishna Kumari, Sweeper	13240	11916	25156	120	2648	500	300	250	0	0	60	0	29034	3019	3000	30	0	0	0	1000	0	0	150	7199	21835

**11th Manual: Budget allocated to each agency including all plans, proposed expenditure and reports on disbursements made etc.
PUBLICATION OF INFORMATION REGARDING ITEMS SPECIFIED IN RULE 4(I)(B)(XI) OF THE RIGHT TO INFORMATION ACT 2005**

LINING OF WATERCOURSES

Sr. No.	Name of schemes (Plan)		Head of Account		Budget Allocation for the year 2013-14		Proposed Expenditure/outlay for the year 2014-15(Rs. in lac)
					Approved allocation for the year 2013-14 (Rs. in lac)	Revised Approved allocation for the year 2013-14 (Rs. in lac)	
A	Code no.	CADWM SCHEMES					
1	CAD-04/ CAD-06	Construction of Field Channels of Sirhind Feeder Part-II Canal System (AIBP) 50:40:10	4705-Capital out lay on command area development-800-other expenditure-53 Major Works		10000.00	6905.62	10000.00
2	CAD-05 /CAD-07	Construction of Field Channels of Bathinda Branch Part-II Canal System (AIBP) 50:40:10			5000.00	4129.80	5000.00
3	CAD-01	Construction of Field Channels of UBDC System (AIBP) 50:40:10			1000.00	814.00	815.00
4	CAD-10	Construction of Field Channels of Kotla Branch Part-II Canal System (AIBP) 50:40:10	New Project		-----	-----	20000.00
		Total			16000.00	11849.42	35815.00
B	NABARD SCHEMES						
1	CAD06/ CAD-08	Lining of Water Courses of Abohar Branch (u) Canal System. (RIDFXV)90:10	4705-Capital out lay on command area development-800-other expenditure-53 Major Works		Distt Faridkot	1000.00	3000.00
					Other Distts	1400.00	4000.00
					Total	2400.00	7000.00
2	CAD07/ CAD-09	Lining of Water Courses of Bhakra Main Branch (BMB) Canal System (RIDFXV) 90:10			5000.00	2300.00	2000.00
		Total			15000.00	4700.00	9000.00
3	CAD-08	Lining of Water Courses of Sirhind Feeder Part-II Canal System (Above CADWM NORMS) 50:40:10	New Project		-----	-----	671.00
4	CAD-09	Lining of Water Courses of Bathinda Branch Part-II Canal System (Above CADWM NORMS) 50:40:10	New Project		-----	-----	849.00
		G. Total(Total Budget)			31000.00	16549.42	46335.00

INSTALLATION OF DEEP TUBEWELLS

Sr. No.	Code no.	Name of Scheme(Plan)	Head of Account	Budget Allocation for the year 2013-14		Proposed Expenditure /outlay for the year 2014-15 (Rs.in lacs)
				Approved allocation (Rs.in lacs)	Revised Approved allocation (Rs.in lacs)	
1	MI04/MI-2(i)	Installation of 280 Deep Tube wells in Kandi Area RIDF-XV(NABARD)	4702- capital outlay on Minor Irrigation 800- other expenditure-01 13 MI -2(i) Installation of 280 nos Tube wells in Kandi Area(95:5)	3000.00	1693.00	6400.00
2	MI-2	Installation of 10 Deep Tubewells in Talwara Block Distt. Hoshirpur (State Plan)	4702- capital outlay on Minor Irrigation 800- other expenditure-01 MI-2.8			
3	MI-10/MI-14	Replacement& Renovation of Tubewells	4702- capital outlay on Minor Irrigation 800- other expenditure-01 MI-2.8(B) Replacement/Renovation of existing tubewell	200.00	--	00.00
4	MI-2	Tubewells& other schemes for Deep Tubewells in Kandi Area	4702- capital outlay on Minor Irrigation 800- other expenditure-01 MI-2.8	00	00	200.00
		G-Total(Total Budget)	-----	3200.00	1693.00	6600.00

PUBLICATION OF INFORMATION REGARDING ITEMS SPECIFIED IN RULE 4(I)(B)(XII) OF THE RIGHT TO INFORMATION ACT 2005

- **Name of the programme or activity: (i) Running & Maintenance of Deep Tubewells.**
- **Objective of the Scheme:-** To improve the socio- economic condition of the poor farmers of the Kandi& non-Kandi areas of Punjab by providing uninterrupted supply of water for irrigation purposes to the barren land of the farmers from the Deep Tubewells which are by Run & Maintained by the PWRMDC; properly.

- **Procedure to avail benefits:-**

As per decision of the Punjab Government in 1982, the cash subsidy for R&M of Tubewells excluding elements of depreciation is to be given to meet the gap between, the expenditure and income from sale of water and accordingly amount of subsidy recoverable from Punjab Government works out as under:
 Total expenditure on R&M of Tubewells excluding depreciation and including overhead charges & Namberdari fee less income from sale of water and less excess provision written back.

- **Duration of the programme/scheme for subsidy**

Sr. No.	Name of Scheme	Period
1	Running& Maintenance of already installed Deep Tubewells	1/4/2013 to 31/03/2014

- **Physical and financial targets of the scheme/ program for the year 2013-14.**

Sr. No.	Name of Scheme	Target for the year 2013-14(no)
1	Running& Maintenance of already installed deep Tubewells	1495

- **Nature/scale of subsidy/amount allotted.**

Sr. No.	Name of Scheme	Head	Period	Description		
				Salary(Rs. in lac)	Contingency (Rs.in lac)	Total (Rs. in lac)
	Running& Maintenance of already installed deep Tubewells	2702(non-plan)	1/4/2013 to 31/03/2014	11657.80	153.85	11811.65

- **Eligibility criteria for grant of subsidy:** - The amount calculated according to above cited procedure is furnished to the Punjab Government and the Punjab Government releases the amount to the Corporation as subsidy accordingly.

- **Details of beneficiaries of subsidy program (numbers):** The farmers of Kandi & non Kandi Areas of Punjab.

Sr. No.	Name of Village	Block	Sr. No.	Name of Village	Block	Sr. No.	Name of Village	Block	Sr. No.	Name of Village	Block
1	Kahlwan-I	Bhunga	375	8-L/1234Bhaini Sidhwan	Khadoor Sahib	749	Pakhawal-14	Sasoya	1123	Doraha	Ajnod
2	Kahlwan-II	-do-	376	15-L/1241 Jahangir	-do-	750	Langeri	Sasoya	1124	-do-	-do-
3	Fatehpur	-do-	377	16-L/1246 Deo	-do-	751	Kehra	Sasoya	1125	Rampur	-do-
4	Kailon	-do-	378	19-L/1245 Deo	-do-	752	Saila Kalan-II	Sasoya	1126	Katana Sahib	-do-
5	Janouri-II	-do-	379	23-L/1249 Deo	-do-	753	Uchhi Palli	N.Shahar	1127		CGWB
6	Bassi Ballo	-do-	380	24-L/1250 Deo	-do-	754	Adoana -1	Balachaur	1128		
7	Bhaliala	-do-	381	26-L/1252 Bath	-do-	755	Adoana -2	-do-	1129	Goslan	Ropar
8	Dhakki	-do-	382	27-L/1253 Bath	-do-	756	Adoana -3	-do-	1130	Jhalian 62	-do-
9	Mustapur	-do-	383	29-L/1255 Bath	-do-	757	Aima-42	-do-	1131	Bal sanda 63	-do-
10	Chak Gujran-I	-do-	384	32-L/1258 Sanghe	Taran Tarn	758	Akliana-1	-do-	1132	Sehon majra new	-do-
11	Bassi Bahadur	-do-	385	33-L/1259 Sanghe	-do-	759	Akliana-2	-do-	1133	Rod majra new	-do-
12	Patiarian	-do-	386	34-L/1260 Sanghe	-do-	760	Balachaur	-do-	1134	Mugal majri 2	-do-
13	Takhni-I	-do-	387	37-L/1263Rasulpur	-do-	761	Balewal	-do-	1135	Mugal majri new	-do-
14	Baroti-III	-do-	388	39-L/1265Rasulpur	-do-	762	Banna	-do-	1136	Lohari (new)	-do-
15	Nangal Isher	-do-	389	2-R/1271 Pakhoke	-do-	763	Bhadi-1	-do-	1137	Brahman majra	-do-
16	Dolowal	-do-	390	5-R/1274 Pakhoke	-do-	764	Bhadi-2	-do-	1138	Bindrakh (new)	-do-
17	Mukeempur	-do-	391	6-R/1275 Pakhoke	-do-	765	Bhadi-3	-do-	1139	Grewal	-do-
18	Janouri-III	-do-	392	7-R/1276 Pakhoke	-do-	766	Bhadi-4	-do-	1140	Kakron 2	-do-
19	Dandoh-II	-do-	393	8-R/1277 Pakhoke	-do-	767	Bhanewal	-do-	1141	Dekwala 1	-do-
20	Neela Naloya	-do-	394	12-R/1281 Bagrian	-do-	768	Bulewal	-do-	1142	Burjwala	-do-
21	Bhikhowal	-do-	395	17-R/1286 Bagrian	-do-	769	Bullewal/Nasirpur	-do-	1143	Attalgarh (new)	-do-
22	Phambra	-do-	396	21-R/1290 Bagrian	-do-	770	Bungri	-do-	1144	Bhadal	-do-
23	Dhakki-II	-do-	397	27-R/1296 Pandori Gola	-do-	771	Dhaktana	-do-	1145	Madwara 2	-do-
24	Manhota	-do-	398	30-R/1299 Pandori Gola	-do-	772	Dhollan	-do-	1146	Sayastpur	-do-
25	Rehmapur	-do-	399	37-R/1306 Chutala	-do-	773	Golu Majra-1	-do-	1147	Bhanglan	-do-
26	Bassi PunjBhaian	-do-	400	38-R/1307 Chutala	-do-	774	Golu Majra-2	-do-	1148	Fatehpur Bhangl	-do-
27	Patiarian-II	-do-	401	1352 Chabal	-do-	775	Golu Majra-3	-do-	1149	Kakron 3	-do-
28	Atwarapur	-do-	402	1339 Mehndi Pur	Valtoha	776	Jalalpur	-do-	1150	Purkhali	-do-
29	Chak Gujran-II	-do-	403	1351 Bhikhiwind	Taran Tarn	777	Jeetpur	-do-	1151	Chintgarh (new)	-do-
30	Husainpur-I	-do-	404	Jandi-1011	Dina Nagar	778	Jogawal-1	-do-	1152	Kishanpura 3	-do-
31	Takhni-II	-do-	405	Chounta 1 st -1012	-do-	779	Jogawal-2	-do-	1153	Bhago majra	-do-
32	Takhni-III	-do-	406	Jharoli-1013	-do-	780	Kathgarh-1	-do-	1154	Samana Kalan 76	ChamkaurSahib
33	Makarsoli	-do-	407	Kunde Lalowal-1014	-do-	781	Kathgarh-2	-do-	1155	Katlor 50	-do-
34	Arniwala shahpur	-do-	408	Chounta 2 nd -1015	-do-	782	Kathgarh-46	-do-	1156	Sandhuian 48	-do-
35	Dehra-II	-do-	409	Jharoli 2 nd -1016	-do-	783	Kular	-do-	1157	Chak Amar Singh 52	-do-
36	Husainpur-II	-do-	410	Sidhana 1 st -1019	-do-	784	Lambuan	-do-	1158	Dehar 57	-do-
37	Baroti-II	-do-	411	Sidhana 2 nd -1020	-do-	785	Majout-1	-do-	1159	Makdona 55	-do-

38	Badala-I	-do-	412	Bhagwanpur 1 st -1021	-do-	786	Majout-2	-do-	1160	Chamkaur 58	-do-
39	Badala-II	-do-	413	Bhagwanpur 2 nd -1022	-do-	787	Majout-3	-do-	1161	Talapur 60	-do-
40	Taggar	-do-	414	Kalizpur 2 nd -1023	-do-	788	Majra jattan -1	-do-	1162	Kotali 61	-do-
41	Bhagowal	-do-	415	Kalizpur 1 st -1024	-do-	789	Majra jattan -2	-do-	1163	Bhura 49	-do-
42	Bainch	-do-	416	Gazikot 1 st -1026	-do-	790	Malewal Bhattian	-do-	1164	Bhura 54	-do-
43	Bariana	-do-	417	Jawalapur-1027	-do-	791	Malewal Kohli	-do-	1165	Gagarwal	-do-
44	Jallowal	-do-	418	Bhadur-1028	-do-	792	Mansewal	-do-	1166	Sarhana 85	Morinda
45	Nangal Ghorewaha-III	-do-	419	Gazikot-2-1348 (CGWB Scheme)	-do-	793	Mehandipur-1	-do-	1167	Dumana75	-do-
46	Takhni-IV	-do-	420	Napwal-933	Pathankot	794	Mehandipur-2	-do-	1168	Fatehpur 102	-do-
47	Badala	-do-	421	Chak Chimna-934	-do-	795	Mohan Majra -1	-do-	1169	Kotla 80	-do-
48	Nangal Ghorewaha-II	-do-	422	Gura Kalan-935	-do-	796	Mohan Majra -2	-do-	1170	Rattangarh 101	-do-
49	Nangal Ghorewaha-I	-do-	423	Andoi 1 st -936	-do-	797	Mohar -1	-do-	1171	Chalaki 95	-do-
50	Janouri-I	-do-	424	Lahri Brahmna-937	-do-	798	Nangal	-do-	1172	Dumchari 97	-do-
51	Baroti-I	-do-	425	Ghiala 2 nd -939	-do-	799	Nanowal-1	-do-	1173	Morinda 94	-do-
52	Dehra-I	-do-	426	Ghebe 2 nd -940	-do-	800	Nanowal-2	-do-	1174	Morinda 93 Dholan majra	-do-
53	Bhagowal-I	-do-	427	Phulra 2 nd -941	-do-	801	Natha Nangal	-do-	1175	Mundian 79	-do-
54	Sheikh	-do-	428	Andoi 3 rd -942	-do-	802	Nawan Pind Taprian	-do-	1176	Sahapur 98	-do-
55	Sainchan-I	-do-	429	Andoi 2 nd -943	-do-	803	Nighi-1	-do-	1177	Kainor WB-II	-do-
56	Sainchan-II	-do-	430	Bhur-944	-do-	804	Nighi-2	-do-	1178	Dhagrli WB-II	-do-
57	Janouri-IV	-do-	431	Azizpur-947	-do-	805	Nighi-3	-do-	1179	Datarpur/Rambah	-do-
58	Hussianpur-44	Hoshiarpur-II	432	Andoi 4 th -948	-do-	806	Nighi-4	-do-	1180	Sahora (new)	Sialba Majri
59	Ajram-47	-do-	433	Ghiala 3 rd -949	-do-	807	Nighi-5	-do-	1181	Mankpur Sharif	
60	Bassi Maroof Hussianpur	Hoshiarpur-I	434	Lahri Brahmna 2 nd -950	-do-	808	Paniali	-do-	1182	Rahmapur	-do-
61	Bhagwal	Hoshiarpur-I	435	Chak Manhasa 1 st -951	-do-	809	Raipur	-do-	1183	Khirpur	-do-
62	Nanda Chour	-do-	436	Chak Manhasa 2 nd -952	-do-	810	Raju Majra	-do-	1184	Rampur Taprian	-do-
63	Randhawa Barota-I	-do-	437	Gura Kalan 2 nd -956	-do-	811	Rattewal(gehlo-7)	-do-	1185	Jaintimajri-1	-do-
64	Randhawa Barota-II	-do-	438	Chak Naraini-960	-do-	812	Rattewal / Neelwara-1	-do-	1186	Dulwan Khadri	-do-
65	Taragarh	-do-	439	Lahri Brahmna 3 rd -963	-do-	813	Rattewal / Neelwara-2	-do-	1187	Bhalpur Taprian	-do-
66	Hargarh	-do-	440	Anerh-964	-do-	814	Rattewal -1	-do-	1188	Khijrawad-I	-do-
67	Pandori Mail	-do-	441	Kauntar Pur	-do-	815	Rattewal -2	-do-	1189	Khijrawad-II	-do-
68	Fattowal	-do-	442	Gurha Kalan-3 rd	-do-	816	Rattewal -3	-do-	1190	Majri	-do-

69	Phambian	-do-	443	Gurha Kalan-4 th	-do-	817	Rattewal -4	-do-	1191	Palanpur	-do-
70	Sandhran Sodian	-do-	444	Andoi 5 th	-do-	818	Rattewal -5 (Redev)	-do-	1192	Majra	-do-
71	Chakowal brahmna	-do-	445	Gharota Kalan 1 st -932	-do-	819	Rattewal -6	-do-	1193	Pardol	-do-
72	Dhada Fateh Singh	-do-	446	Gharota Kalan 2 nd -953	-do-	820	Rattewal -8	-do-	1194	Chatoli (new) –III	-do-
73	Digana Kalan	-do-	447	Chouhan 1 st -954	-do-	821	Rohnu	-do-	1195	Gura Patti	-do-
74	Khun Khun Khurd	-do-	448	Chouhan 2 nd -955	-do-	822	Sabowal	-do-	1196	Jaintimajri –II	-do-
75	Nasrala (P.N.P) (I.R.D.P)	-do-	449	Gharmal-958	-do-	823	Simble Majara	-do-	1197		Kharar
76	Fatehgarh Niara P.N.P)	-do-	450	Jungal-961	-do-	824	Shehbajpur	-do-	1198	Radiala-I	-do-
77	Sandhra	-do-	451	Haibo-962	-do-	825	Surepur	-do-	1199	Radiala-II(new)	
78	Pandori Mehtma	-do-	452	Wadala-959	-do-	826	Takarla-1	-do-	1200	Majat-III(new)	-do-
79	Panj Guriana	-do-	453	Baghial-957	-do-	827	Takarla-2	-do-	1201	Todar Majra(new)	-do-
80	Allowal	-do-	454	Panjpur	-do-	828	Takarla-3	-do-	1202	Gabemajra	-do-
81	Kantian	-do-	455	Naushera Nalbanda	-do-	829	Tandoh	-do-	1203	Ghoga-I(new)	-do-
82	Kadiana	-do-	456	Dhaki Saida	-do-	830	Thanwal -1	-do-	1204	Harlarpur	-do-
83	Mussa	Bhunga	457	Gharota Kalan 3 rd	-do-	831	Thanwal -2	-do-	1205	Majat-IV(new)	-do-
84	Garhdiwala-I	-do-	458	Khanni khuee	-do-	832	Thopia-2	-do-	1206	Sambhalkhe	-do-
85	Mallewal-I	-do-	459	Namala	-do-	833	Thopia-3	-do-	1207	Machale Kalan	-do-
86	Mastawal-I	-do-	460	Manwal 1 st -1091	Bamial	834	Thopia-5	-do-	1208	Machle Khurd	-do-
87	Mastawal-II	-do-	461	Manwal 2 nd -1092	-do-	835	Thopia-7	-do-	1209	Chaparchiri	-do-
88	Bhanowal	-do-	462	Anial-1093	-do-	836	Tundewal-1	-do-	1210	Gharuan305	-do-
89	Rajpur	-do-	463	Dostpur-1094	-do-	837	Tundewal-2	-do-	1211	Garuan303	-do-
90	Monak	-do-	464	Habit Pindi-1036	NarotJaimal Singh	838	Udhanewal -1	-do-	1212	Pakki rurki(new)	-do-
91	Pandori Atwal	-do-	465	Taragarh 2 nd -1037	-do-	839	Udhanewal -2	-do-	1213	Bajheri(new)	-do-
92	Jamshed Chatial	-do-	466	Rattangarh-1039	-do-	840	Udhanewal -3	-do-	1214	Gharuan-IV(new)	-do-
93	Mallewal-II	-do-	467	Nagal Frida-1040	-do-	841	Jagteawal	-do-	1215	Rangian-II(new)	-do-
94	Chotala	-do-	468	Khushi Nagar 1 st -1041	-do-	842	Thopia-2	-do-	1216	Nabipur	-do-
95	Raghwal-I	-do-	469	Khushi Nagar 2 nd -1042	-do-	843	Nawan Pind Taprian-2	-do-	1217	Popna-II(new)	-do-
96	Kakrali	-do-	470	Baknour-1043	-do-	844	Bagowal-1	-do-	1218	Badanpur	Ghanaur
97	Bhatlan	-do-	471	Gande Pindi-1044	-do-	845	Raju Majra (P)	-do-	1219	Ullana(new)	-do-
98	Sikri	-do-	472	Jhela amda shakergarh-1045	-do-	846	Allowal-43	Saroya	1220	Salonia	Bassi Pathana
99	Chotala	-do-	473	Gajju Jagir-1046	-do-	847	Bhanoo	-do-	1221	Ralon-73	-do-
100	Argowal	-do-	474	Balawar-1047	-do-	848	Bichhori	-do-	1222	Lulon119/582	-do-

101	Gondpur	-do-	475	Saharanpur-1048	-do-	849	Boothgarh	-do-	1223	Manmajri-79	Khera
102	Darapur	-do-	476	Bhatoy-1049	-do-	850	Chandiani Kalan	-do-	1224	KaleMajra-71	-do-
103	Thinda Chipra	-do-	477	Darsopur-1050	-do-	851	Chaniani Khurd-1	-do-	1225	Gadhera-72	-do-
104	Dhugga Kalan-I	-do-	478	Narainpur-1051	-do-	852	Chandpur Rurki-1	-do-	1226	Bassian Wadwan	-do-
105	Dhugga Kalan-II	-do-	479	Suhawara Khurd-1052	-do-	853	Chandpur Rurki-2	-do-	1227	Pawala-I	-do-
106	Jio Sahota	-do-	480	Sahib Chhak-1053	-do-	854	Dayalan-41	-do-	1228	Garaulian-1	-do-
107	Garhdiwal-II	-do-	481	Basau Barwa-1054	-do-	855	Dhaarampura	-do-	1229	Garaulian-II	-do-
108	Chohkan	-do-	482	Gazi Barwan-1055	-do-	856	Jeetpur	-do-	1230	Pawala-II	-do-
109	Johal	-do-	483	Kathna-1056	-do-	857	Jeetpur-DC	-do-	1231	Paton	-do-
110	Ramdaspur	-do-	484	Pola-1057	-do-	858	Jhandhupur	-do-	1232	Beromajri	-do-
111	Mahal Bhatian	-do-	485	Farwal-1058	-do-	859	Karimpur Dhiani	-do-	1233	Dadumajra-63	-do-
112	Raghwai-II	-do-	486	Akhwara-1059	-do-	860	Karour-11	-do-	1234	JamitGarh-66	Rajpura
113	Narur	-do-	487	Makhanpur-1060	-do-	861	Katwara Khurd-1	-do-	1235	KauliJattan	-do-
114	Jhambowal	-do-	488	Phulra 1 st -945	Pathankot	862	Katwara Khurd-2	-do-	1236	Khanpur Bangar	-do-
115	Toor	Dasuya	489	Bhanwal 1 st -946	-do-	863	Kaulgarh	-do-	1237	Nadiali	-do-
116	Raja Kalan	-do-	490	Mamoon	-do-	864	Khurdan-32	-do-	1238	Tasauli	-do-
117	Nangal	-do-	491	Siunty	-do-	865	Kukar Suha	-do-	1239	Manakpur(new)	-do-
118	Raju Dwakhri	-do-	492	Kuther	-do-	866	Makhupur	-do-	1240	Gurditpura	-do-
119	Khokhar Dwakhri	-do-	493	Manwal	-do-	867	Mahipur	-do-	1241	Jangpura	-do-
120	Duggal Dwakhri	-do-	494	Mirzapur-971	Dhar Kalan	868	Paili	-do-	1242	Bassi esakha	-do-
121	Gambowal	-do-	495	Behri 1 st -972	-do-	869	Rurki Khurd-51	-do-	1243	Harion	-do-
122	Jaitabad	-do-	496	Attepur-973	-do-	870	Sahiba	-do-	1244	Sural Kalan (new)	-do-
123	Jio Sahota-II	-do-	497	Tharial 1 st -974	-do-	871	Sahungra-1	-do-	1245	Hulka	Dera Bassi
124	Nainowal Vaid	Hoshiarpur-II	498	Behri 2 nd -975	-do-	872	Sahungra-2	-do-	1246	Sarsini	-do-
125	Jalalpur Nangli (C.G.W.B.)	Hoshiarpur-II	499	Mutfarka 1 st -976	-do-	873	Sandrewal	-do-	1247	Janatpur-III	-do-
126	Adamwal-II	-do-	500	Kahanpur 1 st -978	-do-	874	Singhpur	-do-	1248	Fathepur Jattan	-do-
127	Mehatpur-I	-do-	501	Pangoli-979	-do-	875	Torowal	-do-	1249	Sadhapur-II	-do-
128	Singhpur-2	-do-	502	Kahanpur 2 nd -980	-do-	876	Phirni Majara-15	-do-	1250	Hasanpur-II	-do-
129	Bassi Bahiana-3	-do-	503	Jhangeli-981	-do-	877	Sadhra-28	-do-	1251	Bassi	-do-
130	Mehlanwali-4	-do-	504	Behri 3 rd -982	-do-	878	Agampur-1	Anand.Sahib	1252	Shekpur Kalan	-do-
131	Mehlanwali-5	-do-	505	Chhan-983	-do-	879	Agampur-2	-do-	1253	Tiwana-I	-do-
132	Nara Manji	-do-	506	Mutfarka 2 nd -984	-do-	880	Agampur-3	-do-	1254	Tiwana-II	-do-
133	Thathal	Hoshiarpur-I	507	Ranipur 1 st -985	-do-	881	Agampur-4	-do-	1255	BairMajra	-do-
134	Pur Hiran-I	Hoshiarpur-I	508	Ranipur 2 nd -986	-do-	882	Badlehri	-do-	1256	Hansala	-do-
135	Nussa	Dasuya	509	Ranipur 3 rd -987	-do-	883	Bahlu	-do-	1257	Amlala	-do-
136	Kala Jhingar	-do-	510	Mutfarka 3 rd -988	-do-	884	Baruwal	-do-	1258	Jalalpur	-do-
137	Bodal	-do-	511	Mutfarka 4 th -989	-do-	885	Bhanam-1	-do-	1259	DangDhera	-do-
138	Khun-KhunKhurd	-do-	512	Tharial 2 nd -990	-do-	886	Bhanam-2	-do-	1260	Dialpura	
139	Bercha-I	-do-	513	Tharial 3 rd -991	-do-	887	Bhanupali	-do-	1261	Bijanpur-I	-do-

140	Bercha-II	-do-	514	Jandari-992	-do-	888	Bhatton	-do-	1262	Kheri Gujran	-do-
141	Sansarpur-I	-do-	515	Ghoe 2 nd -993	-do-	889	Brahmpur	-do-	1263	Haripur Hinduan	-do-
142	Adochak	-do-	516	Ranipur-994	-do-	890	Chhotewal	-do-	1264	Malikpur	-do-
143	Kalowal	-do-	517	Ghoe 3 rd	-do-	891	Dagaur	-do-	1265	Ramgarh Rurki	-do-
144	Makkowal	-do-	518	Ghoe-4 th	-do-	892	Daroli-1	-do-	1266	Jaloan Kalan-I	-do-
145	Uchi Bassi	-do-	519	Tharial Jaini	-do-	893	Daroli-2	-do-	1267	Dappar	-do-
146	Fatehgarh	-do-	520	Sidhoori	-do-	894	Dasgrain	-do-	1268	Jarot-II	-do-
147	Jagla-I	-do-	521	Dadwan	-do-	895	Gajpur	-do-	1269	Merpur	-do-
148	Sansarpur-II	-do-	522	Ranipur-5 th	-do-	896	Gambirpur	-do-	1270	Jandli	-do-
149	Aglor-I	-do-	523	Kamwal	-do-	897	Golani	-do-	1271	Golumajra	-do-
150	Sanghwal	-do-	524	Khalah	-do-	898	Khamera	-do-	1272	Malan	-do-
151	Aglor-II	-do-	525	Ranipur-6 th	-do-	899	Khanpur	-do-	1273	Untala-II	-do-
152	Dadial	-do-	526	Jugial Jaini-1 st	-do-	900	Kulgran	-do-	1274	Kurli	-do-
153	Pandori	-do-	527	Jugial Jaini-2 nd	-do-	901	Kalitran	-do-	1275	Mahiwal	-do-
154	Jamalpur	-do-	528	Pangoli-2 nd	-do-	902	Lower Majari	-do-	1276	Chandheri	-do-
155	Jagla-II	-do-	529	Aulakh Kalan-1121	Qadian	903	Majra	-do-	1277	Lalru-IV	-do-
156	Jandour	-do-	530	Aulakh Kalan-1122	-do-	904	Mathra Bass	-do-	1278	Lalru-V	-do-
157	Dadial/Hardonek nama Sainso	-do-	531	Aulakh Kalan-1123	-do-	905	Mehalwan	-do-	1279	Jastana Khurd-I	-do-
158	Dadial-II	-do-	532	Aulakh Kalan-1124	-do-	906	Mehan	-do-	1280	Jastana Khurd-I	-do-
159	Dulmiwal	-do-	533	Aulakh Kalan-1125	-do-	907	Mehan	-do-	1281	Dhere Majra	Dera Bassi
160	Jagla-III	-do-	534	Kiri Afgana-1126	-do-	908	Nangali	-do-	1282	Bijanpur-II	-do-
161	Chak Phala	-do-	535	Kiri Afgana-1127	-do-	909	Nangali-2	-do-	1283	Tarsimbli-II	-do-
162	Dadial/Hardonek nama Sainso	-do-	536	Kiri Afgana-1128	-do-	910	Nangran	-do-	1284	RaniMajra-I	-do-
163	Hardoneknama/ Sainso	-do-	537	Kiri Afgana-1129	-do-	911	Passiwal	-do-	1285	RaniMajra-II	-do-
164	Dadial/Aglor	-do-	538	Kiri Afgana-1130	-do-	912	Sangatpur	-do-	1286	Bhagwasssi	-do-
165	Rajwal-III	Talwara	539	Kiri Afgana-1131	-do-	913	Zindwari-1	-do-	1287	Kasauli	-do-
166	Bhambotar-II	-do-	540	Kiri Afgana-1132	-do-	914	Zindwari-2	-do-	1288	Dandrala	-do-
167	Halerh-I	-do-	541	Toharpur-1133	-do-	915	Bhanglan	Nurpur Bedi	1289	KheriJattan	-do-
168	Dhagrol Patti	-do-	542	Bhet Pattan-1134	-do-	916	Majari	-do-	1290	Tarak	-do-
169	Sandhani	-do-	543	Bhet Pattan-1135	S.H.G.Pur	917	Khera Kalmot	-do-	1291	Balopur-II	-do-
170	Tohlu Bhat-I	-do-	544	Bahadurpur-1136	-do-	918	Mehandpur-1	-do-	1292	Punsar	-do-
171	Palahar	-do-	545	Bahadurpur-1137	-do-	919	Mehandpur-2	-do-	1293	Devi Nagar-IV	-do-
172	Sikri	-do-	546	Bahadurpur-1138	-do-	920	Abiana Kalan-2	-do-	1294	Fathepur	-do-
173	Tohlu Bhat-II	-do-	547	Mahesh Dogar-1139	-do-	921	Abiana Khurd	-do-	1295	Samgoli	-do-
174	Bringli	-do-	548	Mahesh Dogar-1140	-do-	922	Asmanpur	-do-	1296	Jaula Kalan	-do-
175	Bhol Kalota-I	-do-	549	Gill Bobe-1141	-do-	923	Azampur-1	-do-	1297	Habatpur	-do-

176	Amroh	-do-	550	Rampur Talwara-1142	-do-	924	Azampur-2	-do-	1298	DharamgarhIII(ne)	
177	Rajwal-I	-do-	551	Samrai-1143	-do-	925	Bahaman Majra-1	-do-	1299	Hathan 2803	Malerkotla-I
178	Chak Aleran	-do-	552	Balarwal-1144	-do-	926	Bahaman Majra-2	-do-	1300	Hathan 2808	-do-
179	Nangal Khanora	-do-	553	Kapoor-1145	-do-	927	Bajroor-1	-do-	1301	Sangali 2810	-do-
180	Batwara	-do-	554	Bhol Bagga-1146	-do-	928	Bajroor-2	-do-	1302	Sangala 2811	-do-
181	Beh Chuhar	-do-	555	Bhol Bagga-1147	-do-	929	Balewal-2	-do-	1303	Himtana 2812	-do-
182	Beh Lakhan	-do-	556	Kho-Kho-wal-1148	-do-	930	Barari	-do-	1304	Malerkotla 2838	-do-
183	Bhandiaran	-do-	557	Aulakh Kalan-1349 (CGWB Scheme	Qadian	931	Basali-1	-do-	1305	Malerkotla 2839	-do-
184	Mangu Mehra	-do-	558	Pandher-1161	Gurdaspur	932	Bhatton	-do-	1306	Rajinder Nagar 2840	-do-
185	Bringli-II	-do-	559	Mustafabad-1166	-do-	933	Bhogipur-1	-do-	1307	Malerkotla 2937	-do-
186	Bhol Kalota-II	-do-	560	Mustafabad-1167	-do-	934	Bhogipur-2	-do-	1308	Sikanderpura 2881	Malerkotla- II
187	Rajwal-II	-do-	561	Mustafabad-1169	-do-	935	Bholewal	-do-	1309	Sultanpur (Badhrawan)2882	-do-
188	Nathuwal	-do-	562	Mustafabad-1170	-do-	936	Boothgarh	-do-	1310	Chak Kalan 2883	-do-
189	Sandhani -II	-do-	563	Mustafabad-1171	-do-	937	Dahan	-do-	1311	Kasampur 2884	-do-
190	Beh Chuhar-II	-do-	564	Rattowal-1172	-do-	938	Daheerpur	-do-	1312	Sherwanikot 2885	-do-
191	Bhambotar-I	-do-	565	Rattowal-1173	-do-	939	Dhamana-1	-do-	1313	Khurd 2888	-do-
192	Halerh-II	-do-	566	Rattowal-1174	-do-	940	Dhamana-2	-do-	1314	Khurd 2889	-do-
193	Bhavnour	-do-	567	Sohal-1181	Dhar Kalan	941	Gochar	-do-	1315	Firozpur (Kuthala) 2895	-do-
194	Bhatoli Near Bhavnour	-do-	568	Chak Depawal-1190	Batala	942	Haripur	-do-	1316	Firozpur (Kuthala) 2897	-do-
195	Kartoli	-do-	569	Chak Depawal-1191	Quadian	943	HeerpurGanoora	-do-	1317	Firozpur (Kuthala) 2898	-do-
196	Beh Nangal-II	-do-	570	Sahari-1196	Batala	944	Jatauli-1	-do-	1318	Firozpur (Kuthala) 2899	-do-
197	Beh Mawa	-do-	571	Bangowani-1201	Dera Baba Nanak	945	Jatauli-2	-do-	1319	Mubarkpur(Chunga) 2863	-do-
198	Beh Vidhaya	-do-	572	Khan Fatta-1209	Batala	946	Jatpur-1	-do-	1320	Naudhrani 2865	-do-
199	Dhalal	-do-	573	Mona Khurd-19	HoshiarpurII	947	Jatpur-2	-do-	1321	Burj 2866	-do-
200	Rakri	-do-	574	Mona Kalan-22	-do-	948	Jatwahar	-do-	1322	Bhudan 2867	-do-
201	Palahar-II	-do-	575	Herian-24	-do-	949	Jhaj-1	-do-	1323	Madevi 2876	-do-
202	Bhater	-do-	576	Khanoura-28	-do-	950	Jhaj-2	-do-	1324	Adampal 2908	-do-
203	Beh Lakhan-II	-do-	577	Ahrana Kalan-55	-do-	951	Jhandian Kalan-1	-do-	1325	Sherwanikot 2879	-do-
204	Bringli-III	-do-	578	Kahri-40	-do-	952	Jhandian Majra	-do-	1326	Hakimpura 2880	-do-
205	Beh Atta	-do-	579	Bajrou-33	-do-	953	Kanger-1	-do-	1327	Hushainpura 2911	-do-
206	Kothi	-do-	580	Pandori Bibi-53	-do-	954	Kanger-2	-do-	1328	Manak Heri 2915	-do-

207	DehPur	-do-	581	Rajpur Bhaian-20	-do-	955	Kartarpur-2	-do-	1329	Amamgarh 2917	-do-
208	Beh Nangal-II	-do-	582	Pandori Kad-25	-do-	956	Kaulapur-1	-do-	1330	Dhaler Kalan 2927	-do-
209	Bhandiaran-II	-do-	583	Phalahi-2	-do-	957	Kaulapur-2	-do-	1331	Dhaler Kalan 2928	-do-
210	Dhalal-II	-do-	584	Dhigangarh	-do-	958	Kukowal Kalwan	-do-	1332	Jhaner 2929	-do-
211	Beh Mawa-II	-do-	585	Ahar Hazi Khanpur	-do-	959	Manku Majra-1	-do-	1333	Jhaner 2930	-do-
212	Beh Khushala	-do-	586	Surapur-38	Mahilpur	960	Muney	-do-	1334	Sandour 2931	-do-
213	Rajwal Har	-do-	587	Sherpur-52	-do-	961	Nalhoti Upperli	-do-	1335	Sandour 2932	-do-
214	Bhambotar-III	-do-	588	Nariala-24-II	-do-	962	Nurpur Kalan-1	-do-	1336	Bishangarh 2933	-do-
215	Beh Dullo	-do-	589	Jandiala-3	-do-	963	Nurpur Kalan -2	-do-	1337	Malerkotla 2809	Malerkotla-I
216	Bhol Badmanian	-do-	590	Lalwan-108	-do-	964	Nurpur Khurd-2	-do-	1338	Kila Rehmatgarh 2818	-do-
217	Fatehpur	-do-	591	Jhanjowal-86	-do-	965	Palata	-do-	1339	Bamal 2805	-do-
218	Mangu Mehra-II	-do-	592	Kangar-98	-do-	966	Pachranda	-do-	1340	Dugni 2806	-do-
219	Beh Kitto	Bhunga	593	Noorpur Brahmna-47	-do-	967	Rampur Kalan-1	-do-	1341	JatiMajra/ Balamgarh 2807	-do-
220	Thakkar	-do-	594	Gogron-84	-do-	968	Rampur Kalan-2	-do-	1342	Dhadogal 2822	-do-
221	Bhalowal-I	Mukerian	595	Mehemdowal-95	-do-	969	Roore Majra-1	-do-	1343	Bamal 2960	-do-
222	Bhalowal-II	-do-	596	Suna-44	-do-	970	Roore Majra-2	-do-	1344	Dhadogal 2823	-do-
223	Sariana-I	-do-	597	Sarangowal-105	-do-	971	Roorewal	-do-	1345	Dhadogal 2824	-do-
224	Fatehpur-I	-do-	598	Bachohi-96-I	-do-	972	Sandhoya	-do-	1346	Jainpur 2825	-do-
225	Fatehpur-II	-do-	599	Tajewal-88	-do-	973	Sarthali-1	-do-	1347	Bhasaur 2814	-do-
226	Godhan	-do-	600	Nasran-107-I	-do-	974	Saupur	-do-	1348	Banbhauri 2827	-do-
227	Fatehpur-III	-do-	601	Ghukrowal-106	-do-	975	Singhpur	-do-	1349	Bhasaur 2815	-do-
228	Nushehra Simbli	-do-	602	Jandoli-87-I	-do-	976	Sukhe Majra	-do-	1350	Lohar Majra 2833	-do-
229	Devel-II	-do-	603	Chak Malan-74	-do-	977	Takhatgarh-1	-do-	1351	Isapur Lande 2869	Sherpur
230	Sariana-III	-do-	604	Kalewal Bhagtan-68	-do-	978	Takhatgarh-2	-do-	1352	Pharwahi 2871	-do-
231	Puro Chak	-do-	605	Kalewal Bhagtan-64	-do-	979	Tapprian	-do-	1353	Katron 2951	-do-
232	Nushehra Simbli-II	-do-	606	Bachohi-100-II	-do-	980	Tedewal	-do-	1354	Changli 2872	-do-
233	Saidon	-do-	607	Bahowal-26	-do-	981	Tibba Nangal-1	-do-	1355	Changli 2873	-do-
234	Sariana-II	-do-	608	Jandoli-81-II	-do-	982	Sakhpur	-do-	1356	Kaleran 2804	-do-
235	Hajipur	-do-	609	Maili-73	-do-	983	Ganura	-do-	1357	Katron 2956	-do-
236	Sandhwal	-do-	610	Bahowal-94	-do-	984	Roruana	-do-	1358	Ghanaur Khurd 2958	-do-
237	Nushehra Simbli-III	-do-	611	Rampur Sainian	-do-	985	Madpur	Ropar	1359	Ghanaur Kalan 2959	-do-
238	Sandhwal-II	-do-	612	Maili-101	-do-	986	Kaluwal	-do-	1360	Mulowal 2962	-do-
239	Raili-I	-do-	613	Kaharpur-76	-do-	987	Mianpur	-do-	1361	Sultanpur 2963	-do-
240	Raili-II	-do-	614	Jandiala-53	-do-	988	Babani Kalan	-do-	1362	Kila Hakimian 2964	-do-
241	Sariana-IV	-do-	615	Ganguwal-99	-do-	989	Kishanpura	-do-	1363	Kumbarwal 2965	-do-
242	Bhavnal-I	-do-	616	Noorpur Brahmna-91	-do-	990	Cherian	-do-	1364	Balian 2967	-do-

243	Mori Chak	-do-	617	Hallowal	-do-	991	Jhampur	Fateh.Shaib	1365	Alal 2973	-do-
244	Jeewanwal	-do-	618	Nangal Choran	-do-	992	Bhua Kheri	Fateh.Shaib	1366	Balian 2975	-do-
245	Bhallowal-III	-do-	619	Jhanjowal	-do-	993	Timberpur	Fateh.Shaib	1367	Kila Hakiman3006	-do-
246	Raili-III	-do-	620	Badowal	-do-	994	BassianBaidwan2	Bassi Pathana	1368	Kila Hakiman3020	-do-
247	Khijarpur	-do-	621	Jandoli-III	-do-	995	Bassian Baidwan-3	-do-	1369	Bugra 3001	Dhuri
248	Bhavnal-II	-do-	622	Suna-II	-do-	996	Chunni Khurd	-do-	1370	Ladda 3002	-do-
249	Jamalpur	-do-	623	Sarangowal	-do-	997	Naraina	-do-	1371	Punnawal 3003	-do-
250	Jat Mehra	-do-	624	Khanni	-do-	998	Pattoon	-do-	1372	Punnawal 3004	-do-
251	Badalian	Dasuya	625	Nasran-II	-do-	999	Kheri	Chamkaur Sahib	1373	Punnawal 3005	-do-
252	Lubana Kullian	Talwara	626	Bichohi-III	-do-	1000	Bhakku Majra	-do-	1374	Batuha 3007	-do-
253	Beh Jogan-I	-do-	627	Alamwal	-do-	1001	Kamalpur	-do-	1375	Pedhni 3010	-do-
254	Beh Jogan-II	-do-	628	Bham-III	-do-	1002	Mangarh rukali	-do-	1376	Kanjhli 3011	-do-
255	Bhatoli	-do-	629	Rehali-54	-do-	1003	Katlaur	-do-	1377	Hassanpur 3012	-do-
256	Namoli	-do-	630	Baddon-60	-do-	1004	Kandhola	-do-	1378	Benra 3014	-do-
257	16/2599Sandewal	Shahkot	631	Dihana-65	-do-	1005	Hairon	-do-	1379	Benra 3015	-do-
258	15/2600Fazalwal	-do-	632	Thakrowal-66	-do-	1006	Raipur	-do-	1380	Batuha 3016	-do-
259	21/2601 Chak Bahmania	-do-	633	Mozo Mazara-72	-do-	1007	Dehar	-do-	1381	Kanjhla 3018	-do-
260	12/2603 Raunta	-do-	634	Bambali-40	-do-	1008	Kotla Surmukh Singh	-do-	1382	Natt 3019	-do-
261	17/2604Langewal	-do-	635	Subhanpur-42	-do-	1009	Kiri Afgana	-do-	1383	Kanjhla 3021	-do-
262	13/2607Danewal	-do-	636	Phagon-45	-do-	1010	Bassi Gujran	-do-	1384	Benra 3022	-do-
263	8/2610 Tut SherSingh Wala	-do-	637	Motian-43-II	-do-	1011	-do-	-do-	1385	Benra 3027	-do-
264	1/2611Passarian	-do-	638	Gopalian-20	-do-	1012	Mansuhan Kalan	Ropar	1386	Babbanpur 2878	-do-
265	6/2612 Sohal Jagir-I	-do-	639	Baleem-32	-do-	1013	Raipur Rayian	Khamanoo	1387	Issi 2834	-do-
266	2/2613 Dhugar	-do-	640	Makhangarh-34	-do-	1014	Neelon Kalan	Machhiwara	1388	Ruldu Singh wala 2979	-do-
267	3/2614 Parjian Kalan	-do-	641	Saidpur-35-I	-do-	1015	Dhande	-do-	1389	Bararwal 2980	-do-
268	4/2615 Parjian Khurd	-do-	642	Saidpur-35-II	-do-	1016	-do-	-do-	1390	RajoMajra 2982	-do-
269	7/2617 Sohal Jagir-II	-do-	643	Sarhala Kalan-15	-do-	1017	Rohilla	-do-	1391	Bugra 2983	-do-
270	25/2620Sarangwal	-do-	644	Burobari-50	-do-	1018	-do-	-do-	1392	Bugra 2984	-do-
271	30/2625Talwandi Bootian	-do-	645	Dihana-59	-do-	1019	Ranwan	-do-	1393	Meemsa 2986	-do-
272	33/2628ManakPur	-do-	646	-do- 62	-do-	1020	Jallah Majra	-do-	1394	Dhandra 2989	-do-
273	35/2629 Lasuri	-do-	647	Baddon-55	-do-	1021	Garhi Tarkhana	-do-	1395	Sherpur Sodhian 2990	-do-

274	39/2632 Poonian	-do-	648	Motian-43-I	-do-	1022	-do-	-do-	1396	Issi 2831	-do-
275	31/2636 Malsian	-do-	649	Barian Kalan-51	-do-	1023	Urna	-do-	1397	Dhuri 2991	-do-
276	73/2638 NimajiPur	-do-	650	Bham-29	-do-	1024	-do-	-do-	1398	Dohla 2993	-do-
277	79/2639Muridwal	-do-	651	Atwal-33	-do-	1025	-do-	-do-	1399	Harchandpura 2994	-do-
278	78/2640 Kasupur	-do-	652	Marula-39	-do-	1026	Urna	-do-	1400	Kaheru 2996	-do-
279	77/2641Rupewal-II	-do-	653	Bariana Khurd-70	-do-	1027	Machhiwara	-do-	1401	Bararwal 2999	-do-
280	84/2642Rupewall	-do-	654	Bham-25	-do-	1028	-do-	-do-	1402	Kakkarwal 3000	-do-
281	81/2643 Badli	-do-	655	Ajnoha-I	-do-	1029	Rattipur	-do-	1403	Balian 3008	Sangrur
282	83/2645 Seachewal	-do-	656	Nadalon	-do-	1030	-do-	-do-	1404	Bhaini Kamboan 2843	Malerkotla-I
283	92/2649 Kotla Heiran	-do-	657	Pajora-I	-do-	1031	Sehjo Majra	-do-	1405	Bijokee Khurd 2844	-do-
284	93/2651Pandher	-do-	658	Mahil Valtohan	-do-	1032	-do-	-do-	1406	Binjokee 2842	-do-
285	94/2652 BilliChao	-do-	659	Dholanwal	-do-	1033	Powat	-do-	1407	Badla 2845	-do-
286	95/2653 Billi Waraich	-do-	660	Mugowal-9	-do-	1034	-do-	-do-	1408	Badla/Narike 2846	-do-
287	76/2654Malhiwal	-do-	661	Chak Natha-77	-do-	1035	Machhiwara	-do-	1409	Guara 2848	-do-
288	96/2656Sahariwal	-do-	662	Rampur-97	-do-	1036	Sehjo Majra	-do-	1410	Guara 2849	-do-
289	70/2659Sajjanwal	-do-	663	Tuto Mazara-61-I	-do-	1037	-do	-do-	1411	Narike 2850	-do-
290	47/2667Mehrajwal	-do-	664	Harjiana-80-I	-do-	1038	Koomkalan	-do-	1412	Narike 2851	-do-
291	52/2672 Nahal-II	-do-	665	Mallewal-104	-do-	1039	Billon	-do-	1413	Mahorana 2847	-do-
292	53/2673 Nahal-I	-do-	666	Baddowan Sardulapur-I	-do-	1040	-do-	-do-	1414	Baurhaie Kalan2922	Malerkotla-II
293	60/2676 SidhuPur	-do-	667	Mugowal-63	-do-	1041	Bir sahnawal	-do-	1415	Dehleez kalan 2923	-do-
294	54/2679 Manak-II	-do-	668	Gandowal	-do-	1042	Bhama Kalan	-do-	1416	Deheez khurd 2924	-do-
295	23/2618 Bahmanian	-do-	669	Gajjar-I	-do-	1043	-do-	-do-	1417	Maherna Khurd 2925	-do-
296	90/2681 Usafpur Darewal	-do-	670	Mehdood-I	-do-	1044	-do-	-do-	1418	Rasulpur 2926	-do-
297	75/2693 Hothian	Kapurthala	671	Mehdood-II	-do-	1045	Ghulal	-do-	1419	Balewal 2835	Malerkotla-I
298	10/2711 Badshah Pur	-do-	672	Lasra	-do-	1046	Katani Kalan	-do-	1420	Uppal Kheri 2816	-do-
299	2/2712 Boot	Nadala	673	Gajjar-II	-do-	1047	-do-	Mangat	1421	Uppal Kheri 2817	-do-
300	51/2713 Lakhan Kalan	Nadala	674	Baddowan Sardulapur-II	-do-	1048	Sahnawal	-do-	1422	Ratolan 2813	-do-
301	76/2694 Mander Bet	Kapurthala	675	Harjiana-II	-do-	1049	-do-	-do-	1423	Manak Majra 2819	-do-
302	54/2716 Hamira	Nadala	676	Tuto Mazara-II	-do-	1050	SahnawalKhurad	-do-	1424	Manak Majra 2820	-do-
303	59/2719 Murar	-do-	677	Bhartpur Rajputa	-do-	1051	Kanech	-do-	1425	Bhaini Kalan 2821	-do-
304	63/2720 Dogranwala	-do-	678	Sakruli-12	-do-	1052	-do-	-do-	1426	Saroud 2836	-do-

305	12/2721Bamuwal	-do-	679	Dandewal-58	-do-	1053	Barwala	-do-	1427	Mandiala 2837	-do-
306	11/2722Mudowal	-do-	680	Manalion-57	-do-	1054	Bheron Munna	-do-	1428	Ladewal 2853	-do-
307	60/2724 Gadana	-do-	681	Dalron-4	-do-	1055	Manngarh	-do-	1429	Jabbo Majra 2854	-do-
308	61/2725 Dhillwan	-do-	682	Dandewal-18	-do-	1056	Katani Khurad	-do-	1430	Bhurthala 2855	-do-
309	78/2726 Lakhan Ke Padda	-do-	683	Sakruli-23	-do-	1057	Manngarh	-do-	1431	Bhurthala 2856	-do-
310	15/2727 Lakhan Ke Padda	-do-	684	Langeri-30	-do-	1058	Bheni Sahib	-do-	1432	Mannvi 2858	-do-
311	14/2728 Jag Nihal Garh	-do-	685	Nangal Khurd-8	-do-	1059	Kot Gangu Rai	-do-	1433	Mandian 2860	-do-
312	16/2729 Talwandi Purdol	-do-	686	Paldi-I	-do-	1060	Koom Khurad	-do-	1434	Moranwali 2861	-do-
313	18/2731 Nadala	-do-	687	Paldi-II	-do-	1061	Koom kalan	-do-	1435	Jattuan 2862	-do-
314	19/2732 Damulian	-do-	688	Kharodi	-do-	1062	Kot Gangu Rai	-do-	1436	Sadatpur 2875	Malerkotla-II
315	25/2733 Khassan	-do-	689	Gujarpur	-do-	1063	-do-	-do-	1437	Kup Khurd 2938	-do-
316	24/2734 Khassan	-do-	690	Jeevanpur-II	Garhshankar	1064	Raipur Bet	-do-	1438	Akbarpur Chhanna 2939	-do-
317	26/2735Ramgarh	-do-	691	Bharowal-I	-do-	1065	Prithipur	-do-	1439	Umarpura 2940	-do-
318	50/2737 Surkhan	-do-	692	-do- II	-do-	1066	Upplan	-do-	1440	Momnabad 2941	-do-
319	29/2739 Pandori	-do-	693	Hiyatpur	-do-	1067	Poonian	Machhiwara	1441	Jandalee 2942	-do-
320	31/2741 Bholath	-do-	694	Jassowal	-do-	1068	Garhi Tarkhana	-do-	1442	Kup Kalan 2943	-do-
321	22/2742 Mubarkpur	-do-	695	Kukran-II	-do-	1069	Adiana	-do-	1443	Kup Kalan 2944	-do-
322	21/2744 Raipur Pirbaksh	-do-	696	Mozipur	-do-	1070	Bhattian	-do-	1444	Naro Majra 2945	-do-
323	49/2745 Raipur Pirbaksh	-do-	697	Road Mazara-III	-do-	1071	Ranwan	-do-	1445	Bhogiwal 2947	-do-
324	48/2746 Maksud Pur	-do-	698	Kulewal	-do-	1072	-do-	-do-	1446	Matoie 2949	-do-
325	56/2747 Maksud Pur	-do-	699	Chak Gujran	-do-	1073	Garhi Tarkhana	-do-	1447	Gounspura 2950	-do-
326	32/2748 Kamrai	-do-	700	Paddi Sura Singh	-do-	1074	Machhiwara	-do-	1448	Jitwal Kalan 2912	-do-
327	34/2749 Bagrian	-do-	701	Sadarpur	-do-	1075	Rattipur	-do-	1449	Dhanno 2913	-do-
328	6/2750 Boparai	-do-	702	Bilron-II	-do-	1076	Powat	-do-	1450	Jitwal Khurd 2914	-do-
329	35/2751 Boparai	-do-	703	Helran	-do-	1077	Behlolpur	-do-	1451	Kanganwal 2919	-do-
330	38/2752 Bajaj	-do-	704	Bireempur	-do-	1078	Neelon Khurad	Samrala	1452	Kanganwal 2920	-do-
331	36/2753 Karnail Ganj	-do-	705	Khanpur-II	-do-	1079	-do-	-do-	1453	Kanganwal 2921	-do-
332	39/2754 Tandi Aulakh	-do-	706	Hajipur-I	-do-	1080	Neelon	-do-	1454	Mehsampur 3059	Dhuri
333	37/2755 BagwanPur	-do-	707	Bharatpur Jattan-3	-do-	1081	Jaipura	Doraha	1455	Kalajhar 3050	Bhawanigarh
334	47/2756Begowal	-do-	708	Bharowal-III	-do-	1082	Rajgarh	-do-	1456	Bharo 3052	-do-
335	46/2757Begowal	-do-	709	Kukran-III	-do-	1083	Jaipura	-do-	1457	Harkishanpura305	-do-

336	58/2758Begowal	-do-	710	Pakhawal-15	-do-	1084	-do-	-do-	1458	Fatehgarh (Panjgrian) 2890	Sherpur
337	55/2759 Jabbowal	-do-	711	Saleempur-16	-do-	1085	-do-	-do-	1459	Fatehgarh (Panjgrian) 2891	-do-
338	5/2760 Nadali	-do-	712	Nangla-23	-do-	1086	-do-	-do-	1460	Fatehgarh (Panjgrian) 2892	-do-
339	45/2761 Akbar Pur	-do-	713	Bharatpur-5	-do-	1087	Doraha	-do-	1461	Fatehgarh (Panjgrian) 2893	-do-
340	3/2762 Bhatnura Kalan	-do-	714	Dadial-9	-do-	1088	Rampur	-do-	1462	Fatehgarh (Panjgrian) 2894	-do-
341	42/2766 Bassi	-do-	715	Kukran-12	-do-	1089	-do-	-do-	1463	Badese 2900	-do-
342	44/2767 Kaluwal	-do-	716	Saila Khurd-3	-do-	1090	-do-	-do-	1464	Mahmadpur 2901	-do-
343	43/2768 Bariar	-do-	717	Khanpur-21	-do-	1091	-do-	-do-	1465	Gurbaxpura 2902	-do-
344	3/2770 Babeli	Phagwara	718	Kunail-26	-do-	1092	Begowal	-do-	1466	Gurbaxpura 2904	-do-
345	4/2771 Duggan	-do-	719	Road Mazara-27	-do-	1093	-do-	-do-	1467	Tibba 2905	-do-
346	5/2772 Bohani	-do-	720	Road Mazara-28	-do-	1094	-do-	-do-	1468	Tibba 2906	-do-
347	1/2773Bhabiana	-do-	721	Kukra Mazara-29	-do-	1095	-do-	-do-	1469	Tibba 2907	-do-
348	21/2775 PremPur	-do-	722	Bhawanipur	-do-	1096	Kishanpura	-do-	1470	Alipur Khalsa 2868	-do-
349	15/2776 Rampur Khaliyan	-do-	723	Malkowal-I	-do-	1097	Kotli	-do-	1471	Gobindpura 2954	-do-
350	20/2777 Sahni	-do-	724	Garhimansowal-I	-do-	1098	Payal	-do-	1472	Sherpur 2955	-do-
351	17/2778 Malik Pur	-do-	725	Mehandiwali	-do-	1099	-do-	-do-	1473	Badshahpur 2970	-do-
352	19/2779 Wahid	-do-	726	Tiba	-do-	1100	Jallah Majra	-do-	1474	Badshahpur 2971	-do-
353	16/2780 Nasirabad	-do-	727	Shekowal	-do-	1101	Dhamot	-do-	1475	Gumti 3029	Barnala-
354	22/2782 Narur	-do-	728	Habowal	-do-	1102	Firozpur	-do-	1476	Gurm 3031	-do-
355	10/2785Baghana	-do-	729	Mazari	-do-	1103	Ghudani Kalan	-do-	1477	Kalsian 2934	Raikot
356	7/2786Panchhta	-do-	730	Khurali	-do-	1104	-do-	-do-	1478	Kalsian 2935	-do-
357	18/2787Panchhta	-do-	731	Sihwan	-do-	1105	-do-	-do-	1479	Bhadewal 3032	Doraha
358	9/2788 Rehan Jattan	-do-	732	Kukowal	-do-	1106	-do-	-do-	1480	Jandali 3033	-do-
359	8/2789 MiranPur	-do-	733	Garhimansowal-II	-do-	1107	Maksoodra	-do-	1481	Jargri 3034	-do-
360	65/2697 Mothan Wala	Sultanpur	734	Bilron-III	-do-	1108	Chankoian	-do-	1482	Sirthala 3041	-do-
361	64/2700 Mahanbali Pur	-do-	735	Ghago Roranwali-22	-do-	1109	Ghaloti	-do-	1483	Jargri 3043	-do-
362	71/2701 Shitabgarh	-do-	736	Hajipur-II	-do-	1110	-do-	-do-	1484	Nizampur 3044	-do-
363	1/2702 Rampur Jagir	-do-	737	Dhada Kalan-II	-do-	1111	Rarra Sahib	-do-	1485	Lasara/Sihora 3045	-do-
364	70/2703 Gill Dewana	-do-	738	Mazara Dingrian-I	-do-	1112	Landha	-do-	1486	Lasara 3046	-do-
365	72/2708Jabbowal	-do-	739	-do- II	-do-	1113	Ghangas	-do-	1487	Sihoura 3047	-do-
366	73/2709 Bhago	-do-	740	Chansu Jattan	-do-	1114	Katahari	-do-	1488	Dhamout 3048	-do-

	Araian										
367	74/2710 Sherpur Sadha	-do-	741	Saila Kalan-II	-do-	1115	Lapran	-do-	1489	Mangewal 3049	-do-
368	1216 Sheron Bagha	Raiyya	742	Dhada Kalan-37	-do-	1116	Bilaspur	-do-	1490	Jarg 3035	Khanna
369	1217 Sheron Bagha	-do-	743	Simbli-I	-do-	1117	Buani	-do-	1491	Jarg 3036	-do-
370	1218 Sheron Bagha	-do-	744	-do- II	-do-	1118	Gidrhi	-do-	1492	Jarg 3037	-do-
371	1-L/1227Taragarh	JandialaGuru	745	Najarpur	-do-	1119	Raul	-do-	1493	Rauni 3038	-do-
372	2-L/1228Taragarh	-do-	746	Panam	-do-	1120	Jahangir	-do-	1494	Mullanpur 3039	-do-
373	3-L/1229Taragarh	-do-	747	Pensra-III	Sasoya	1121	Ajnod	-do-	1495	Malakpur 3040	-do-
374	4-L/1230Dhararh	-do-	748	Lehra-20	Sasoya	1122	-do-	-do-			

**13th Manual: Particulars of recipients of concessions, permits or authorization granted by the Public Authority
PUBLICATION OF INFORMATION REGARDING ITEMS SPECIFIED IN RULE 4(I)(B)(XIII) OF THE RIGHT TO INFORMATION ACT 2005**

Name of the Department /Board /Corporation: - Punjab Water resources Management & Development Corporation; Chandigarh.

This manual is not applicable to the Corporation

14th Manual: Information available in Electronic Form.

PUBLICATION OF INFORMATION REGARDING ITEMS SPECIFIED IN RULE 4(I)(B)(XIV) OF THE RIGHT TO INFORMATION ACT 2005

Name of the Department /Board /Corporation: - Punjab Water resources Management & Development Corporation; Chandigarh.

This manual is not applicable to the Corporation

15th Manual: Particulars of facilities to citizen for obtaining information.
PUBLICATION OF INFORMATION REGARDING ITEMS SPECIFIED IN RULE 4(I)(B)(XV) OF THE RIGHT TO INFORMATION ACT 2005

- **Name of Facility:** Information regarding the Lining of Watercourses, Installation of Deep Tubewells; R& M of Tubewells and Employees of the Corporation.
- **Location of Facility:** Head Office, Circles Offices, Division Offices. The addresses are given in 9th Manual.
- **Detail of information made available:** (i) Projects being undertaken and projects to be undertaken in future for the lining of Watercourses and Installation of Deep Tubewells. (ii) Tubewells Run & Maintained by PWRMDC. (iii) Employees working in the Corporation.
- **Working hours of the facility:** - 9 AM to 5 PM except holidays.
- **Contact Persons and contact details:** As per 9th Manual.

16th Manual: Names, designation and other particulars of the Public Information Officers.

PUBLICATION OF INFORMATION REGARDING ITEMS SPECIFIED IN RULE 4(I)(B)(XVI) OF THE RIGHT TO INFORMATION ACT 2005

The following Officers of Punjab Water Resources Management and Development Corporation are hereby designated as Appellant Authority, Public Information Officers and Assistant Public Information Officer in the public interest without any extra remuneration vide office order no.12440/PWRMDC/P-1 dated 25/5/2011.

Appellant Authority(Ex-Officio)	Public Information Officer (Ex-Officio)	Assistant Public Information Officer (Ex-Officio)	
Head Office, SCO-29, Sector-26, Chandigarh.			
Superintending Engineer, (Planning & Vigilance), PWRMDC; Chandigarh. E-Mail: seplanning@pwrmdc.com Phone: 0172-2793223	Financial Adviser, PWRMDC; Chandigarh. E-Mail: rkananddata@yahoo.com Phone: 0172-2790767	Assistant Controller (F&A) PWRMDC; Chandigarh. Assistant Controller (Salary) PWRMDC; Chandigarh.	
	Divisional Engineer (Tubewells) PWRMDC; Chandigarh. E-Mail: detpwrmdc@gmail.com Phone: 0172-2792966	Sub Divisional Engineer (Tubewell), PWRMDC; Chandigarh.	
	Divisional Engineer (Lining) PWRMDC; Chandigarh E-Mail: deliningpwrmdc@gmail.com Phone: 0172-2790630	Sub Divisional Engineer (Lining), PWRMDC; Chandigarh	
	Divisional Engineer (Establishment) PWRMDC; Chandigarh. E-Mail: deesttpwrmdc2014@gmail.com Phone: 0172-2790235	-----	
	-----	Sub Divisional Engineer (Vigilance), PWRMDC; Chandigarh E-Mail: devigpwrmdc2014@gmail.com Phone: 0172-2791287	
	-----	Junior Geophysicist, Hydrogeological Wing, PWRMDC; Sahibzada Ajit Singh Nagar. E-Mail: shhydrowingpwrmdc2014@gmail.com Phone: 0172-2228120	
	Lining Circle No. 1, PWRMDC; Faridkot		
	Superintending Engineer, Lining Circle No. 1 PWRMDC; Faridkot E-Mail: sefaridkot@pwrmdc.com Phone: 01639-256197	Divisional Engineer, Lining Division No.1, PWRMDC; Ferozepur. E-Mail: depwrmdcfzr1@gmail.com Phone: 01632-246212	Sub Divisional Engineer, Sub Division No.1, PWRMDC; Ferozepur
Sub Divisional Engineer, Sub Division No.2, PWRMDC; Ferozepur			
SDE, Sub Division No.3, PWRMDC; Ferozepur			
Sub Divisional Engineer, Sub Division No.4, PWRMDC; Ferozepur.			
Sub Divisional Engineer, Sub Division No.5, PWRMDC; Mansa			
	Sub Divisional Engineer, Sub Division No.6, PWRMDC;		

			Mansa.
		Divisional Engineer, Lining Division No.2, PWRMDC; Mansa. E-Mail: de2pwrmdc2014@gmail.com Phone: 01652-227115	Sub Divisional Engineer, Sub Division No.7,PWRMDC; Bhikhiwind
			Sub Divisional Engineer, Sub Division No.8,PWRMDC; Bhikhiwind
			SDE, Sub Division no.9, PWRMDC; Malout
			Sub Divisional Engineer, Sub Division no.10, PWRMDC; Fazilka
		Divisional Engineer, Lining Division No.3 PWRMDC; Malout. E-Mail: de3pwrmdc2014@yahoo.in Phone: 01637-260936	Sub Divisional Engineer, Sub Division no.11, PWRMDC; Jalalabad.
			Sub Divisional Engineer, Sub Division no.12, PWRMDC; Malout.
			Sub Divisional Engineer, Sub Division No.13, PWRMDC; Abohar.
			Sub Divisional Engineer, Sub Division No.14, PWRMDC; Abohar
		Divisional Engineer, Lining Division No.4, PWRMDC; Abohar. E-Mail: de4pwrmdc2014@gmail.com Phone: 01634-224666	Sub Divisional Engineer, Sub Division No.15, PWRMDC; Abohar.
			SDE, Sub Division No.16,PWRMDC; Abohar
	Lining Circle No.2, PWRMDC; Bhatinda.		
Superintending Engineer , Lining Circle No.2 PWRM&DC; Bhatinda. E-Mail: sebathinda@pwrmdc.com Phone: 01642-270293			Sub Divisional Engineer, Sub Division No.17, PWRMDC; Ludhiana.
		Divisional Engineer, Lining Division No.5, PWRMDC; Ludhiana. E-Mail: de5pwrmdc2014@gmail.com Phone: 01612-455451	Sub Divisional Engineer, Sub Division No.18, PWRMDC; Ludhiana.
			Sub Divisional Engineer, Sub Division No.19, PWRMDC; Ludhiana.
			Sub Divisional Engineer, Sub Division No.20, PWRMDC; Tarn Taran.
			Sub Divisional Engineer, Sub Division No.21, PWRMDC; Rampuraphul.
		Divisional Engineer, Lining Division No.6, PWRMDC; Rampuraphul. E-Mail: de6pwrmdc2014@gmail.com Phone: 01651-220750	Sub Divisional Engineer, Sub Division No.22, PWRMDC; Mansa.
			Sub Divisional Engineer, Sub Division No.23, PWRMDC; Rampuraphul.
			Sub Divisional Engineer, Sub Division No.24, PWRMDC; Rampuraphul.

		Divisional Engineer, Lining Division No.7, PWRMDC; Bathinda. E-Mail: de7pwrmdc2014@gmail.com Phone: 01642-211639	Sub Divisional Engineer, Sub Division No.25, PWRMDC; Bathinda.
			Sub Divisional Engineer, Sub Division No.26, PWRMDC; Bathinda.
			Sub Divisional Engineer, Sub Division No.27, PWRMDC; Bathinda.
			Sub Divisional Engineer, Sub Division No.28, PWRMDC; Bathinda.
		Divisional Engineer, Lining Division No.8, PWRMDC; Bathinda. E-Mail: de8pwrmdc2014@gmail.com Phone: 01642-270925	Sub Divisional Engineer, Sub Division No.29, PWRMDC; Bathinda.
			Sub Divisional Engineer, Sub Division No.30, PWRMDC; Bathinda.
			Sub Divisional Engineer, Sub Division No.31, PWRMDC; Bathinda.
			Sub Divisional Engineer, Sub Division No.32, PWRMDC; Bathinda.
Tubewell Construction Circle, PWRMDC; Chandigarh			
<p>Superintending Engineer, Tubewell Construction Circle, PWRMDC; Chandigarh. E-Mail: sechandigarh@pwrmdc.com Phone: 0172-2707206</p>		Divisional Engineer, Operation & Maintenance, Division, PWRMDC; Sahibzada Ajit Singh Nagar E-Mail: deopmmohali@gmail.com Phone: 0172-2265629	Sub Divisional Engineer, Tubewell Sub Division ,PWRMDC; Morinda
			Sub Divisional Engineer, Operation & Maintenance, Sub Division PWRMDC; Chandigarh.
			Sub Divisional Engineer, Tubewell Sub Division, PWRMDC; Gandakheri.
		Divisional Engineer, Tubewell Division, PWRMDC; Malerkotla. E-Mail: detdmkl@gmail.com Phone: 01675-253038	Sub Divisional Engineer, Tubewell Sub Division No.1, PWRMDC; Malerkotla.
			Sub Divisional Engineer, Tubewell Sub Division No.2, PWRMDC; Malerkotla.
			Sub Divisional Engineer, Tubewell Sub Division No.3, PWRMDC; Malerkotla.
		Divisional Engineer, Tubewell Construction Division, PWRMDC; Ropar. E-Mail: de_tcd_ropar@hotmail.com Phone: 01881-222866	Sub Divisional Engineer, Operation & Maintenance, Sub Division PWRMDC; Balachaur.
			Sub Divisional Engineer, Tubewell Sub Division No.3, PWRMDC; Ropar.
			Sub Divisional Engineer, Tubewell Sub Division No.4, PWRMDC; Sri Anandpur Sahib.
			Sub Divisional Engineer, Tubewell Sub Division, PWRMDC; Nurpur Bedi.

		Divisional Engineer , Tubewell & Store Division, PWRMDC; Ludhiana	Sub Divisional Engineer, Operation &Maintenance, Sub Division PWRMDC; Ludhiana
		E-Mail: dets.pwrmdc@gmail.com Phone: 0161-2520084	Sub Divisional Engineer, Tubewell Sub Division PWRMDC; Doraha
			Sub Divisional Engineer, Operation &Maintenance, Sub Division PWRMDC; Samrala.
Tubewell Construction Circle, PWRMDC; Hoshiarpur			
<p>Superintending Engineer, Tubewell Construction Circle ,PWRMDC; Hoshiarpur E-Mail: sehoshiarpur@pwrmdc.com Phone: 01882-241219</p>		Divisional Engineer, Operation &Maintenance, Division, PWRMDC; Hoshiarpur. E-Mail: opmdivisionhoshiarpur@gmail.com Phone: 01882-222763	Sub Divisional Engineer, Sub Division No.1, PWRMDC; Hoshiarpur.
			Sub Divisional Engineer, Sub Division No.2, PWRMDC; Hoshiarpur.
			Sub Divisional Engineer, OPM Sub Division, PWRMDC; Mahilpur.
			Sub Divisional Engineer, OPM Sub Division, PWRMDC; Garhshankar.
		Divisional Engineer, Tubewell Construction, Division, PWRMDC; Hoshiarpur. E-Mail: depwrmdclf@gmail.com Phone: 01882-223110	Sub Divisional Engineer, OPM Sub Division No.1, PWRMDC; Hoshiarpur.
			Sub Divisional Engineer, Sub Division no.1, PWRMDC; Hoshiarpur.
			Sub Divisional Engineer, OPM Sub Division no.2, PWRMDC; Hoshiarpur.
			Sub Divisional Engineer, Sub Division no.3, PWRMDC; Dasuya.
		Divisional Engineer, Tubewell Division, PWRMDC; Jalandar. E-Mail: dejalandhar0181@gmail.com Phone: 01812-642897	Sub Divisional Engineer, Tubewell Sub Division, PWRMDC; Jalandar.
			Sub Divisional Engineer, Tubewell Sub Division, PWRMDC; Amritsar.
			Sub Divisional Engineer, Tubewell Sub Division, PWRMDC; Kapurthala.
		Divisional Engineer, Tubewell Division, PWRMDC; Pathankot. E-Mail: depwrmdcptk@gmail.com Phone: 01862-100727	Sub Divisional Engineer, Tubewell Sub Division no.1, PWRMDC; Pathankot.
			Sub Divisional Engineer, Mechanical Sub Division no.2, PWRMDC; Pathankot.
			Sub Divisional Engineer, Mechanical Sub Division no.3, PWRMDC; Pathankot.
			Sub Divisional Engineer, Civil Works Sub Division ,PWRMDC; Dhariwal.

17th Manual: Any other useful information.

PUBLICATION OF INFORMATION REGARDING ITEMS SPECIFIED IN RULE 4(I)(B)(XVII) OF THE RIGHT TO INFORMATION ACT 2005

• **Citizen's Charter of the Public Authority.**

(i) **Vision:** - To promote, improve and administer minor irrigation projects such as installation of Deep Tubewells, lining of Watercourses and Running & Maintenance of already installed Deep Tubewells etc.

(ii) **Mission: - Lining of Watercourses:** Since irrigation is essential to increase the production and productivity, it is thus very imperative to conserve every drop of water supplied to the fields through watercourses. Moreover, it has been experienced that there is a shortfall of water at the end of the channels during the period of necessity. Accordingly, by lining the earthen watercourses, water up to the extent of 20-25% can be saved which gets lost due to seepage and breaches and cuts in the unlined field channels. Apart from this, the lining of watercourses will facilitate gravity command in the entire chak, reduction in filling time in the watercourses and optimum utilization of water remaining in the watercourses after completion of rotation, shunning away the constant patrolling of the upstream reaches of the watercourses during the warabundi period thereby eliminating the manpower required for up-keeping and maintenance of katcha watercourses, removal of water lifts(Jhallars)or reduction in lifts which results in saving of energy and manpower, reduction in the cost of maintenance and de-silting of Katcha watercourses and improvement in the efficiency of conveyance system.

Installation of Deep Tubewells: Due to optimum utilization of surface water of rivers in Punjab, the demand on groundwater has increased manifold. Development of groundwater has made fast strides and its exploration is increasing day by day. This has been necessitated because of the erratic & inadequate rainfall and non- availability of sufficient surface water resources. The Kandi and some non Kandi areas of the state are semi-arid with medium annual rainfall. The land of these areas is fertile and irrigation facilities are required, but there is no means of irrigation except natural rainfall as Canal irrigation to whole of the Kandi and non-Kandi areas is not technically feasible & viable because of undulating topography and existence of hills and Choes & Khads traversing all along the area. Thence, the only way of providing assured means of irrigation is installation of tubewells. The aquifer material of the area is mainly composed of boulders, pebbles in association with sand and is deep seated. This area is very backward and farmers are very poor possessing small land holdings. Due to deep seated hard formations, it is beyond the economic reach of the individual farmers to have their own tubewells, so the poor farmers remain mainly dependent on rain. Therefore, to improve the socio-economic condition of the poor inhabitants of the backward Kandi and non- Kandi areas the installation of deep tubewells in the areas was required and entrusted to PSTC now PWRMDC; by the Punjab Govt in 1970-71 under different schemes.

The particulars of the officers involved in vision and mission are given in 9th Manual.

• **Grievances Redressal Mechanism: -**

In pursuance of Chief Secretary to Govt. of Punjab office letter no. 6/29/2011-4/1144 dated 25.10.2011 and Punjab Irrigation Department (IB P-3) Chandigarh office letter no.17/145/2011-1/P-3/3446 dated 09/11/2011, Superintending Engineer (Plg/Vig), PWRMDC; Chandigarh vide office order no.810-18/PWRMDC/PLG/CHD/63-W/Plg dated 09-01-2012 was deputed as Nodal Officer for redressing the Grievances & Complaints of the Public. This information was disseminated and circulated. Whenever, an application is received from an applicant in regard to complaint, the concerned officer/official was asked to redress or reply about the matter of the complaint/Grievance within 15 days of issue of the letter. If the complaint/ Grievance is not redressed then two reminders within 7 days interval are given. Even if the complaint/ Grievance is not redressed/ settled then hearing is conducted wherein both the parties are called upon and decision is given. If the complainant is satisfied with the decision then the case is closed otherwise the concerned Officer/Official is asked to implement the decision within 10 days. If the concerned Officer/Official does not implement/obey the decision then disciplinary action is taken against him/her as per rules and case is transferred to another Officer/ Official. This process is kept continued till the complaint/ Grievance is settled. The Quarterly Report for the settled/non-settled complaints/ Grievance is sent to the Nodal Officer-cum-Director Evolution, Department of Irrigation, Punjab, Chandigarh.

• **Detail of applications received under RTI and information provided:**

FORM - 1

MATERIAL FOR ANNUAL REPORT FOR THE YEAR 2013 UNDER SECTION 25 RTI ACT 2005

To be submitted by every Public Authority to Administrative Department by 17-02-2014

Name of Parent Department : Punjab Water Resources Management and Development Corporation; Chandigarh

Name of Public Authority : PIO – Cum – Divisional Engineer

Period From : 01-01-2013 to 31-12-2013

Number of requests received	Decisions where applications for information rejected	Number of cases where disciplinary action taken against any office in respect of administration of RTI Act.	Number of times various provision were invoked while rejecting requests														Total registration fee collected (Rs.)	Total additional fee collected (Rs.)	Total penalty levied & collected (Rs.)
			Relevant Sections of RTI Act 2005																
			Section 8(1)										Others Sections						
			(a)	(b)	(c)	(d)	(e)	(f)	(g)	(h)	(i)	(j)	9	11	24	Others			
1.	2.	3.	4.	5.	6.	7.	8.	9.	10.	11.	12.	13.	14.	15.	16.	17.	18.	19.	20.
85	04	--	--	--	--	--	--	--	--	--	--	--	--	--	--	6(1) 6(1) 6(1) (T)	810.00 * 540.00 Access received.	477.00	1827.00

FORM - 2

ANNUAL REPORT FOR THE YEAR 2013 FOR EACH ADMINISTRATIVE DEPARTMENT (PUBLIC AUTHORITY WISE)

To be submitted by every Administrative Department to SICP by 17-02-2014

Name of Parent Department : Punjab Water Resources Management and Development Corporation; Chandigarh

Name of Public Authority : PIO – Cum – Divisional Engineer

Period From

: 01-01-2013

to

31-12-2013

Sr. No.	Name of Public Authorities with the Department	Public authorities who have filed annual returns (Yes/No)	Number of requests received	Decisions where applications for information rejected	Number of cases where disciplinary action taken against any office in respect of administration of RTI Act.	Number of times various provision were invoked while rejecting requests														Total registration fee collected (Rs.)	Total additional fee collected (Rs.)	Total penalty levied & collected (Rs.)
						Relevant Sections of RTI Act 2005																
						Section 8(1)						Others Sections										
						(a)	(b)	(c)	(d)	(e)	(f)	(g)	(h)	(i)	(j)	9	11	24	Others			
1.	2.	3.	4.	5.	6.	7.	8.	9.	10.	11.	12.	13.	14.	15.	16.	17.	18.	19.	20.	21.	22.	
1.	Financial Advisor, PWRM&DC; Chandigarh	Yes	02	--	--	--	--	--	--	--	--	--	--	--	--	--	--	--	20.00 * 40.00 access received.	--	60.00	
2.	D.E. (Estt.), PWRM&DC; Chandigarh	Yes	18	01	--	--	--	--	--	--	--	--	--	--	--	--	--	--	170.00 * 95.00 access received.	58.00	323.00	
3.	D.E. (Lining), PWRM&DC Chandigarh	Yes	01	--	--	--	--	--	--	--	--	--	--	--	--	--	--	--	10.00	--	10.00	
4.	D.E. (Tubewell), PWRM&DC ; Chandigarh	Yes	--	--	--	--	--	--	--	--	--	--	--	--	--	--	--	--	--	--	--	
5.	D.E. No.1, PWRM&DC Ferozepur	Yes	06	--	--	--	--	--	--	--	--	--	--	--	--	--	--	--	60.00	--	60.00	
6.	D.E. No.2, PWRM&DC Mansa	Yes	03	--	--	--	--	--	--	--	--	--	--	--	--	--	--	--	30.00 * 60.00 access received.	--	90.00	
7.	D.E. No.3, PWRM&DC ; Malout	Yes	--	--	--	--	--	--	--	--	--	--	--	--	--	--	--	--	--	--	--	
8.	D.E. No.4, PWRM&DC ; Abohar	Yes	07	--	--	--	--	--	--	--	--	--	--	--	--	--	--	--	70.00 * 80.00 Access received.	--	150.00	
9.	D.E. No.5,	Yes	05	--	--	--	--	--	--	--	--	--	--	--	--	--	--	--	50.00	--	50.00	

	PWRM&DC ; Ludhiana																				
10.	D.E. No.6, PWRM&DC ; Rampura Phul	Yes	--	--	--	--	--	--	--	--	--	--	--	--	--	--	--	--	--	--	--
11.	D.E. No.7, PWRM&DC ; Bathinda	Yes	09	02	--	--	--	--	--	--	--	--	--	--	--	--	--	6(1) 6(1)(T)	70.00	--	70.00
12.	D.E. No.8, PWRM&DC ; Bathinda	Yes	08	--	--	--	--	--	--	--	--	--	--	--	--	--	--	--	80.00	--	80.00
13.	D.E. OPM Division, PWRM&DC ; Hoshiarpur	Yes	03	--	--	--	--	--	--	--	--	--	--	--	--	--	--	--	20.00 * Rs.10\$- has hold in S.E.'s office.	--	30.00
14.	D.E. T/well Const. Division, PWRM&DC ; Hoshiarpur	Yes	--	--	--	--	--	--	--	--	--	--	--	--	--	--	--	--	--	--	--
15.	D.E. Tubewell Division, PWRM&DC ; Jalandhar	Yes	--	--	--	--	--	--	--	--	--	--	--	--	--	--	--	--	--	--	--
16.	D.E. Tubewell Division, PWRM&DC ; Pathankot	Yes	--	--	--	--	--	--	--	--	--	--	--	--	--	--	--	--	--	--	--

17.	D.E. Tubewell & Store Division PWRM&DC Ludhiana.	Yes	02	--	--	--	--	--	--	--	--	--	--	--	--	--	--	--	20.00 * 20.00 access received.	--	40.00
18.	D.E. Tubewell Division, PWRM&DC; Ropar	Yes	06	01	--	--	--	--	--	--	--	--	--	--	--	--	6(1)	50.00 * 20.00 access received.	140.00	210.00	
19.	D.E. OPM Division, PWRM&DC ; Mohali	Yes	05	--	--	--	--	--	--	--	--	--	--	--	--	--	--	--	50.00 * 50.00 access received.	--	100.00
20.	D.E., Tubewell Division, PWRM&DC Malerkotla	Yes	10	--	--	--	--	--	--	--	--	--	--	--	--	--	--	--	100.00 * 175.00 access received.	279.00	554.00

Performa-A

Performa for maintaining register of cases of 1st appeals filed before the 1st Appellate Authority under Right to Information Act, 2005.

Sr. No.	Designation of Public Authority	Designation of Appellate Authority	Date of Institution of 1 st Appeal	Date of decision of 1 st Appeal	Reason if the 1 st appeal not decided in time	Whether the appeals was accepted	Whether the appeals was rejected
1.	Financial Advisor, Chandigarh	S.E. (Plg.),PWRMDC; Chandigarh	18-04-2013 11-07-2013 24-07-2013 27-08-2013	23-04-2013 16-07-2013 29-07-2013 10-09-2013	N.A. N.A. N.A. N.A.	Yes Yes Yes Yes	No No No No
2.	Divisional Engineer (Estt.), Chandigarh	S.E. (Plg.),PWRMDC; Chandigarh	17-12-2012 22-11-2013 28-11-2013	15-01-2013 27-11-2013 19-12-2013	N.A. N.A. N.A.	Yes Yes Yes	No No No
3.	Divisional Engineer, Tubewell Const. Division, PWRM&DC; Ropar	S.E., Chandigarh Tubewell Circle, PWRM&DC ; Chandigarh	31-05-2013	14-06-2013	N.A.	Yes	No
4.	Divisional Engineer, Lining Division No.3, PWRM&DC; Malout	S.E. Lining Circle No.1, PWRM&DC; Faridkot	06-03-2013 07-03-2013 22-03-2013 (2 No. Applicants)	08-03-2013 25-03-2013	N.A. N.A. N.A.	Yes Yes Yes	No No No

MONTHLY ABSTRACT

Previous Balance	Number of 1 st Appeals Instituted during the month	Number of 1 st Appeals decided during the month (01.01.2013 - 31.12.2013)	Number of 1 st Appeals pending	Number of Appeals accepted	Number of Appeals rejected	Number of Appeals pending for more than two months
01	--	January 01	--	01	--	--
--	--	February --	--	--	--	--
--	03	March 03	--	03	--	--
--	01	April 01	--	01	--	--
--	01	May 01	--	01	--	--
--	--	June --	--	--	--	--
--	02	July 02	--	02	--	--
--	01	August --	01	01	--	--
--	--	September 01	--	--	--	--
--	--	October --	--	--	--	--
--	02	November 01	01	02	--	--
--	--	December 01	--	--	--	--

Department - Punjab Water Resources Management & Development Corporation;

Period - 01-01-2013 to 31-12-2013

Performa for Annual Return of the 1st Appeals decided by 1st Appellant Authority to the State Information Commission Punjab- Right to Information Act, 2005.

Sr. No.	Designation of Public Authority	Designation of 1 st Appellate Authority	Previous Balance	Total No. of 1 st Appeals instituted	No. of 1 st Appeals decided				Number of Appeals pending	Number of Appeals rejected	Number of Appeals accepted	Reasons if the appeals were not decided with in time
					Within 30 days	Within 45 days	More than 45 days	Total				
1.	2.	3.	4.	5.	6.				7.	8.	9.	10.
1.	Financial Advisor, Chandigarh	S.E. (Plg.), PWRMDC ; Chandigarh	--	04	04	--	--	04	--	--	04	N.A.
2.	Divisional Engineer (Estt.), Chandigarh	S.E. (Plg.), PWRMDC ; Chandigarh	01	03	03	--	01	04	--	--	04	N.A.
3.	Divisional Engineer, Tubewell Const. Division, PWRM&DC; Ropar	S.E., Chandigarh Tubewell Circle, PWRM&DC; Chandigarh	--	01	01	--	--	01	--	--	01	N.A.
4.	Divisional Engineer, Lining Division No.3, PWRM&DC ; Malout	S.E. Lining Circle No.1, PWRM&DC ; Faridkot	--	03	03	--	--	03	--	--	03	N.A.

• **List of completed schemes/projects:**

Sr. No.	Installation of Deep Tubewells	Construction of Field Channels/Lining of Watercourses
1.	S & I of 300 No T/wells along Sirhind Canal	Lining of Watercourses of Sangrur Disty
2.	S & I of 35 No T/wells in Saroya Block	Lining of Watercourses of Faridkot Disty
3.	S & I of 16 No T/wells in Kharar 5 Km of Repar Block	Lining of Watercourses of Malukpur Disty
4.	S & I of 35 No T/wells in Bajwara Block	Lining of Watercourses of Sheron Disty
5.	S & I of 12 No T/wells in Bajwara Block 5 Phase-11	Lining of Watercourses of Talwandi Disty
6.	S & I of 35 No T/wells in Dera Bassi Block	Lining of Watercourses of Mr.Tungwali of Phool Disty
7.	S & I of 12 No T/wells in Nurpur Bedi Block	Lining of Watercourses of Bathinda Disty
8.	S & I of 12 No T/wells in Rajpura Block	Lining of Watercourses of Panjawa Disty
9.	S & I of 65 No T/wells along River Ravi Kalanpur	Lining of Watercourses of Mudki Disty
10.	S & I of 40 No T/wells in Bhunga Block	Lining of Watercourses of Lambi Disty
11.	S & I of 10 No T/wells of Anandpur Sahib Block	Lining of Watercourses of Bhawabigarh Disty
12.	S & I of 5 No T/wells under IFDP	Lining of Watercourses of Sunam Disty
13.	S & I of 25 No T/wells in Garshankar Block	Lining of Watercourses of Nidampur Disty
14.	S & I of 36 No T/wells in Dinanager Block	Lining of Watercourses of Kotla Disty
15.	S & I of 30 No T/wells in Shri Hargobindpur Block	Lining of Watercourses of Dialpur Disty
16.	S & I of 10 No T/wells in Dhar Kalan Block	Lining of Watercourses of Arniwala Disty
17.	S & I of 10 No T/wells in Pathankot Block	Lining of Watercourses of Sehna Disty
18.	S & I of 20 No T/wells in Hoshiarpur Block	Lining of Watercourses of Kasu Begu Disty
19.	S & I of 5 No T/wells in Mahilpur Block	Lining of Watercourses of Jeet Disty
20.	S & I of 15 No T/wells in Balachaur Block	Lining of Watercourses of Mari Disty
21.	S & I of 152 No T/wells in Rayya Block	Lining of Watercourses of Dhulkot Disty
22.	S & I of 15 No T/wells in Ropar Block	Lining of Watercourses of Kingwah Disty
23.	S & I of 10 No T/wells in Majari Block	Lining of Watercourses of Rasulpur Disty
24.	S & I of 4 No T/wells in Chamkaur Sahib Block	Lining of Watercourses of Pendi Disty
25.	S & I of 20No T/wells in Bhunga Block	Lining of Watercourses of Ghuman Disty
26.	S & I of 5 No T/wells in Valtoha Block	Lining of Watercourses of Longowal Disty
27.	S & I of 10 No T/wells in Saroha Block	Lining of Watercourses of Upli Disty
28.	S & I of 10 No T/wells in Balachaur Block	Lining of Watercourses of Ladbanjara Disty
29.	S & I of 5 No T/wells in Narot Jaimal Singh Block	Lining of Watercourses of Bhaini Disty
30.	S & I of 40 No T/wells in Anandpur Sahib Block	Lining of Watercourses of Jaitu Disty
31.	S & I of T/wells in Hard Rock Area	Lining of Watercourses of Kewl1 Disty
32.	Kandi Araea Development Scheme	Lining of Watercourses of Boha Disty
33.	Laying of additional underground pipelines	Lining of Watercourses of Arkbas Disty
34.	S & I of 10 No T/wells in Nurpur Block	Lining of Watercourses of Bhikhi Disty

35.	Replacement of improvement of T/wells under EAPP Scheme	Lining of Watercourses of Sibian Disty
36.	S & I of 30No T/wells in Balachaur Block	Lining of Watercourses of Kotla Disty
37.	S & I of 30No T/wells in Kharar SM & Ropar Block	Lining of Watercourses of Sarwan Disty
38.	S & I of 30No T/wells in Dera Bassi Block	Lining of Watercourses of Golewal Disty
39.	S & I of 7 No T/wells under CGWB	Lining of Watercourses of Teoni Disty(u)
40.	S & I of 15 No T/wells under CGWB	Lining of Watercourses of Aspal Disty
41.	S & I of 15 No T/wells Bhani Rayyan from CGWB	Lining of Watercourses of Sukhchain Disty
42.	S & I of alternative No T/wells in Kharar, Sialba Majari, Ropar Blocks	Lining of Watercourses of 240 No. Watercourses by Soil Conservation Deptt
43.	S & I of alternative No T/wells Rajpura Blocks	Lining of Watercourses of Doda Disty (L)
44.	S & I of alternative No T/wells in Saroya Block	Lining of Watercourses of Doda Disty (U)
45.	S & I of alternative No T/wells in Hoshiarpur Block-1	Lining of Watercourses of Lal Bhai Disty(L)
46.	S & I of alternative No T/wells in Hoshiarpur Block-II	Lining of Watercourses of Lal Bhai Disty(U)
47.	S & I of alternative No T/wells in Dera Bassi Block Under World Bank Scheme	Lining of Watercourses of Dhanoli Disty
48.	S & I of 20 No T/wells in Narot Jaimal Singh Block	Lining of Watercourses of Raunta Disty
49.	S & I of 20 No T/wells in Pathankot Block	Lining of Watercourses of Sukhchain Disty
50.	S & I of 15 No T/wells in Dhar Kalan Block	Lining of Watercourses of Begha Disty
51.	S & I T/wells in Dina Nagar Block	Lining of Watercourses of Jagroan Disty
52.	S & I of 5 No T/wells in Bamial Block	Lining of Watercourses of Patti Disty
53.	S & I of 5 No T/wells in Bamial Block	Lining of Watercourses of Kot Bhai Disty
54.	S & I of 20 No T/wells in Narot Jaimal Singh Block	Lining of Watercourses of Pacca Disty
55.	S & I of 25 No T/wells in Bhuga Block	Lining of Watercourses of Behrnan Disty
56.	S & I of 25 No T/wells in Talwara Block	Lining of Watercourses of Barnala Disty
57.	S & I of 30 No T/wells in Balachaur Block	Lining of Watercourses of Bhander Disty
58.	S & I of 20 No T/wells in Dasuya Block	Lining of Watercourses of Lambi Disty
59.	S & I of 15 No T/wells in Mukerian Block	Lining of Watercourses of Jangirana Disty
60.	S & I of 75 No World Bank T/wells in Dera Bassi BLK Ph-2	Lining of Watercourses of Rupana Disty
61.	S & I of 75 No T/wells in Dera Bassi Block	Lining of Watercourses of Teona Disty
62.	S & I of 245 No T/wells in Saroya Block	Lining of Watercourses of Bhadaur Disty
63.	S & I of 75 No T/wells in Garshankar Block	Lining of Watercourses of Dhapali Disty
64.	S & I of 75 No T/wells in Mahilpur Block	Lining of Watercourses of Peori Disty
65.	S & I of 75 No T/wells in Ropar Block	Lining of Watercourses of Khara Disty
66.	S & I of 75 No T/wells in Sialba Majri Block	Lining of Watercourses of Mansa Disty
67.	S & I of 30 No State Tubewells	Lining of Watercourses of Bangi Disty
68.	S & I of 75No State Tubewells(New Scheme)	Lining of Watercourses of Dhanauri Disty
69.	S & I of 75 No T/wells in Chamkaur Sahib Block	Lining of Watercourses of Jaitu Disty
70.	S & I of 75 No T/wells in Hajipur Block	Lining of Watercourses of Ghai Disty

71.	S & I of 75 No T/wells in Kharar Block	Lining of Watercourses of Muktsar & Rupana Disty
72.	S & I of 8 No T/wells in Beat Area	Lining of Watercourses of Arniwala Disty
73.	S & I of 75 No T/wells in Nurpur Bedi Block	Lining of Watercourses of Karmgarh Disty
74.	S & I of 14 No T/wells in NABARD	Lining of Watercourses of Jamari Disty
75.	S & I of 100 No T/wells in NABARD	Lining of Watercourses of Serhali Disty
76.	S & I of 14 No T/wells State Plan	Lining of Watercourses of Joga Disty
77.	S & I of 5 No T/wells Blachour	Lining of Watercourses of Raguwali Disty
78.	S & I of 10 No T/wells Nurpur Bedi	Lining of Watercourses of Khemkarn Disty
79.	S & I of 7 No T/wells Beat Area in Mukeria/Dasuya	Lining of Watercourses of Zira Disty
80.	S & I of 10 No T/wells Panchayati Raj Balachour	Lining of Watercourses of Assabuttar Disty
81.	S & I of 25 No T/wells Talwara/Dasuya Block	Lining of Watercourses of Illahiwah Disty
82.	S & I of 25 No T/wells State Plan	Lining of Watercourses of Jodhpur Disty
83.	S & I of 7 No T/wells Garhshankar Mahilpur Block	Lining of Watercourses of B.D.Link
84.	S & I of 31 No T/wells Balance Work Dera Bassi Block	Lining of Watercourses of Kot Dhuna Disty
85	S & I of 7 alternative Tubewells in Bhunga Block	Lining of Watercourses of Malout & Kot Bhai Disty
86		Lining of Watercourses of Faridkot Disty II
87		Lining of Watercourses of Abohar Disty
88		Lining of Watercourses of Sirhind Disty
89		Lining of Watercourses of Sirhind Feeder
90		Lining of Watercourses of New Abu Disty
91		Lining of Watercourses of Phool Disty
92		Lining of Watercourses of Karamgarh Disty
93		Lining of Watercourses of Raikot Disty
94		Lining of Watercourses of Amiwala Disty
95		Lining of Watercourses of Kayan Disty
96		Lining of Watercourses of Malout Disty
97		Lining of Watercourses of Residduial works of Ph-1
98		Lining of Watercourses of Kharyal Disty
99		Lining of Watercourses of Akhara Disty
100		Lining of Watercourses of Kakhanwali Disty
101		Lining of Watercourses of New Abul Khurana Disty
102		Lining of Watercourses of Low Level Machani Minor
103		Construction of Field Cannels of Eastern Canal Project Part-I
104		Construction of Field Cannels of Sirhind Feeder Part-I
105		Construction of Field Cannels of Kotla Branch Part-I
106		Construction of Field Cannels of Bathinda Part-I
107		Residual work of Eastern Canal Project Part-I

- **List of schemes/projects underway:**

Sr. No.	Installation of Deep Tubewells		Construction of Field Channels/Lining of Watercourses
1	S & I of 280 Deep Tube wells in Kandi Area RIDF-XV(NABARD)		CADWM SCHEMES
			Construction of field channels of Sirhind Feeder Part-II Canal System (AIBP)
2	S & I of 10 Deep Tubewells in Talwara Block Distt. Hoshiarpur.		Construction of field channels of Bathinda Branch Part-II Canal System (AIBP)
	-----		Construction of Field Cannels of UBDC
4	-----		NABARD SCHEMES
			Lining of Water Courses of Abohar Branch (u) Canal System. (RIDFXV)
5	-----		Lining of Water Courses of Bhakra Main Branch (BMB) Canal System (RIDFXV)
	NEW PROJECTS		NEW PROJECTS
1	S & I of 140 Deep Tube wells in Kandi and non -Kandi Areas of Punjab.	1	Construction of Field Channels of Kotla Branch Part-II Canal System (AIBP) 50:40:10
	-----	2	Lining of Water Courses of Sirhind Feeder Part-II Canal System (Above CADWM NORMS) 50:40:10
	-----	3	Lining of Water Courses of Bathinda Branch Part-II Canal System (Above CADWM NORMS) 50:40:10

- **Detail of contracts entered into including name of contractor, amount of contract and period of completion of contract.**

- 1. Installation of Deep Tubewells**

Sr. No.	Name of contractor	Amount of contract (Rs)	Period/date of completion of contract.
1	M/S Super Engineers, Chandigarh Road Baldev Nagar Ambala City	Rs.28,69,35,000/-	25/2/2015
2	M/S Skylark Industries, D-154, Ground Floor, Industrial Estate, Phase VII, Sahibzada Ajit Singh Nagar.	Rs.15,35,87,148/-	25/5/2015